

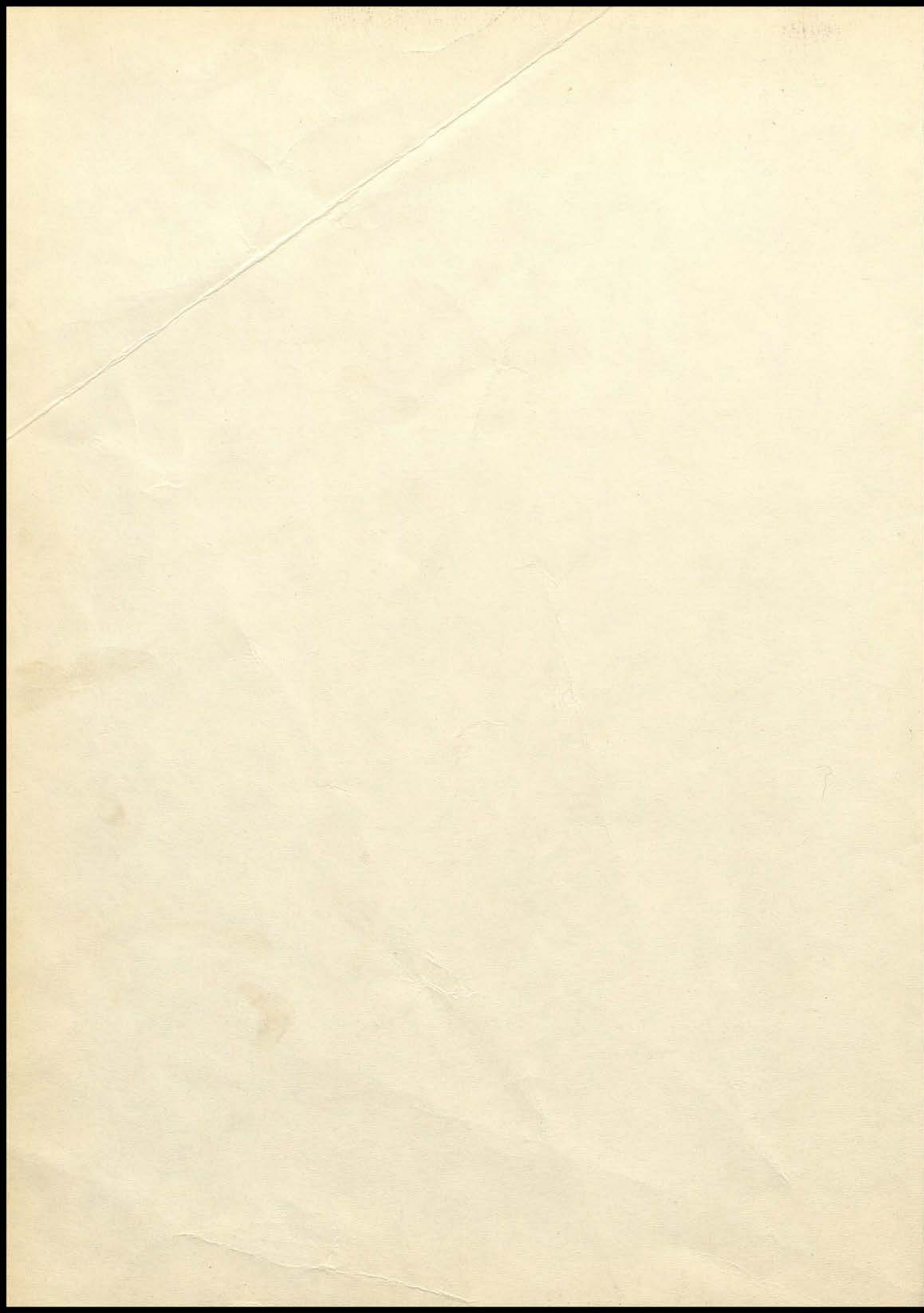


1966 WILDCAT









# 1966 Wildcat

**UNIFIED  
SCHOOL DISTRICT**

NO. 406

Wathena High School

Wathena, Kansas

These are the things  
that we will  
remember

This year and as long  
as we live





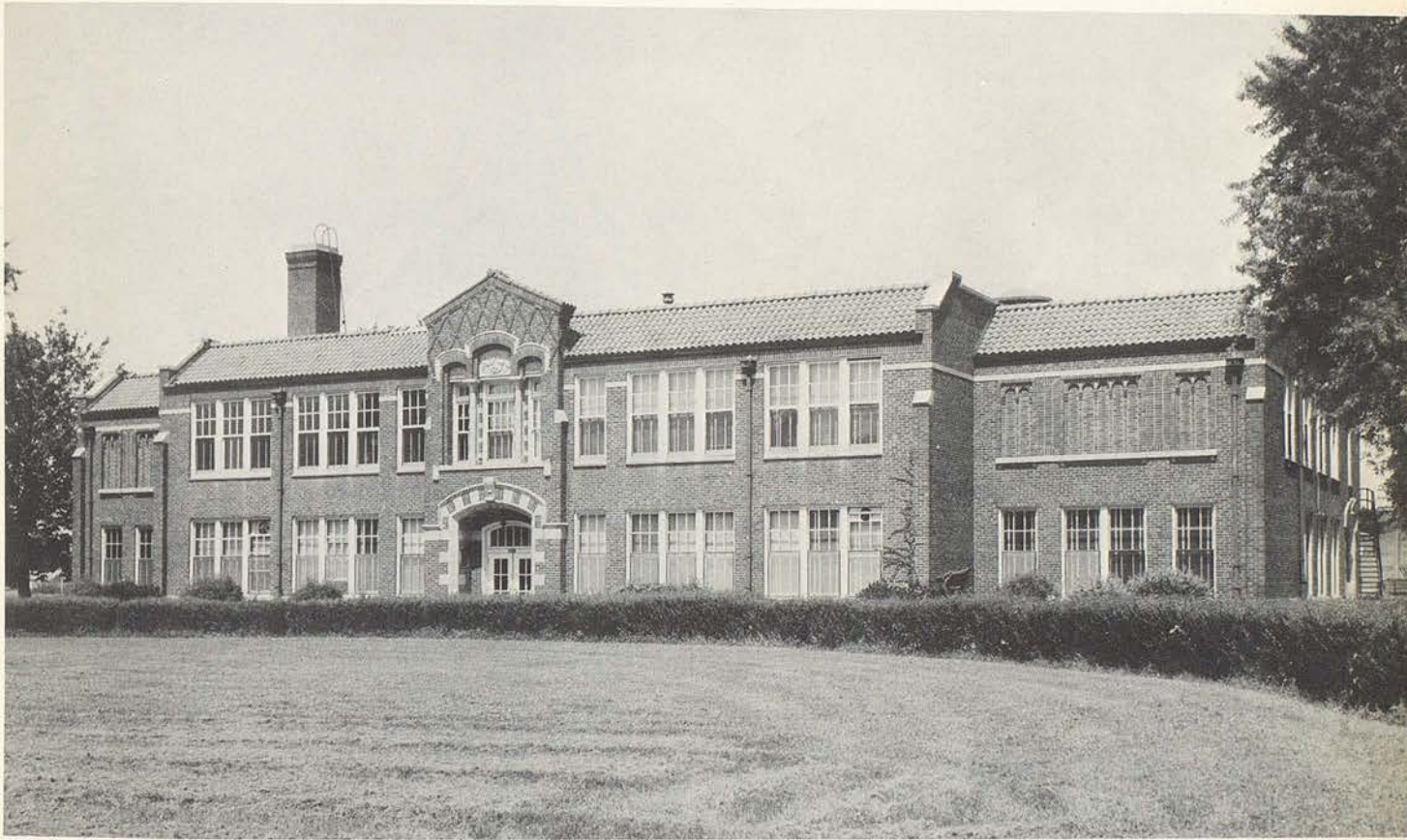
# WATHENA HIGH SCHOOL

WATHENA, KANSAS

## UNIFIED SCHOOL DISTRICT

NO. 406

**This we will remember:**



Wathena High School—a familiar sight for the past thirty-five years. But at this important stage in the life of our school, progress has stepped in and we are witnessing a change.

Realizing that today's graduates must be better prepared to live in this complex age, area voters passed an important plan which expanded the district and its facilities.

While we have been loyal to our school, proud of its traditions and ideals, we know that change is needed and must take place. We look forward to the completion of the new building . . . to the new face it will present in our community.

THE UNIVERSITY OF CHICAGO

PHYSICS DEPARTMENT

1952

PHYSICS 551

1952





*Administration*

THE UNIVERSITY OF TEXAS AT AUSTIN

LIBRARY

1968

LIBRARY

1968

**UNIFIED  
SCHOOL DISTRICT**

NO. 406

**SUPERINTENDENT**

Mr. Hart, our Superintendent, finds his days and schedule filled with many and varied duties. Each new day brings many new problems for which he must find the answers and many decisions he must make regarding school policy and activities. He is genuinely interested in the welfare of the students and strives to make their school years happy and productive.



**ELMER Y. HART, Superintendent**

**BOARD OF EDUCATION**



Mr. Hart, Superintendent; Board members: Dwayne Foley, Vernon Laipple; Marjorie Higdon, clerk; Melvin Goin, president; Henry Kiehnhoff, Jr.; Fred Juhl; Eugene Eisiminger, vice-president.

Board members are elected for a term of four years with three members coming up for re-election every two years.

We feel that with these fine officials at the helm, our school, U.S.D. No. 406, will operate smoothly and efficiently.

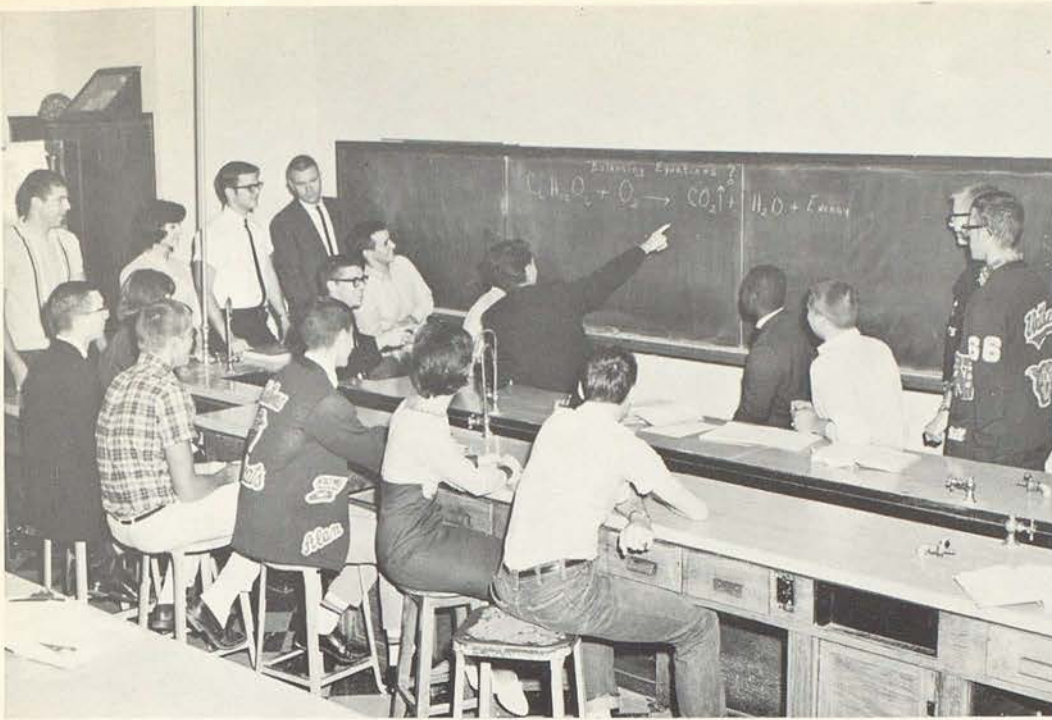
THE UNIVERSITY OF TEXAS AT AUSTIN

LIBRARY

1968

LIBRARY

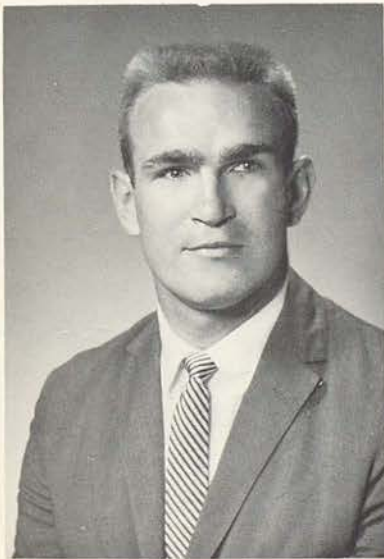
1968



**LYLE MODELMOG**  
 B. S. Degree  
 Ks. State Teachers College  
 Gen. Science  
 Chemistry  
 Biology  
 Athletics

**MR. MODELMOG'S CHEMISTRY CLASS—**

Science develops the inquiring mind. Instruction places special emphasis upon the student's mastery of an extended knowledge of the world about us and gives answers to how-and-why questions.



**JERRY McCLOUD**  
 B. S. Degree  
 Ks. State Teachers College  
 Shop I-II  
 Drafting  
 Driver Education



**MR. McCLOUD'S DRIVER EDUCATION CLASS—**

Students realize that in addition to the experience gained in being behind the wheel and actually driving, classwork is necessary to learn rules of the highway, and the mechanics under the hood of the car.

THE UNIVERSITY OF TEXAS AT AUSTIN

LIBRARY

1968

LIBRARY

1968



**LOUISE SISK**

B. S. Degree  
 Central Missouri  
 Teachers College  
 Algebra I  
 Gen. Math.  
 Bus. Arith.  
 English III

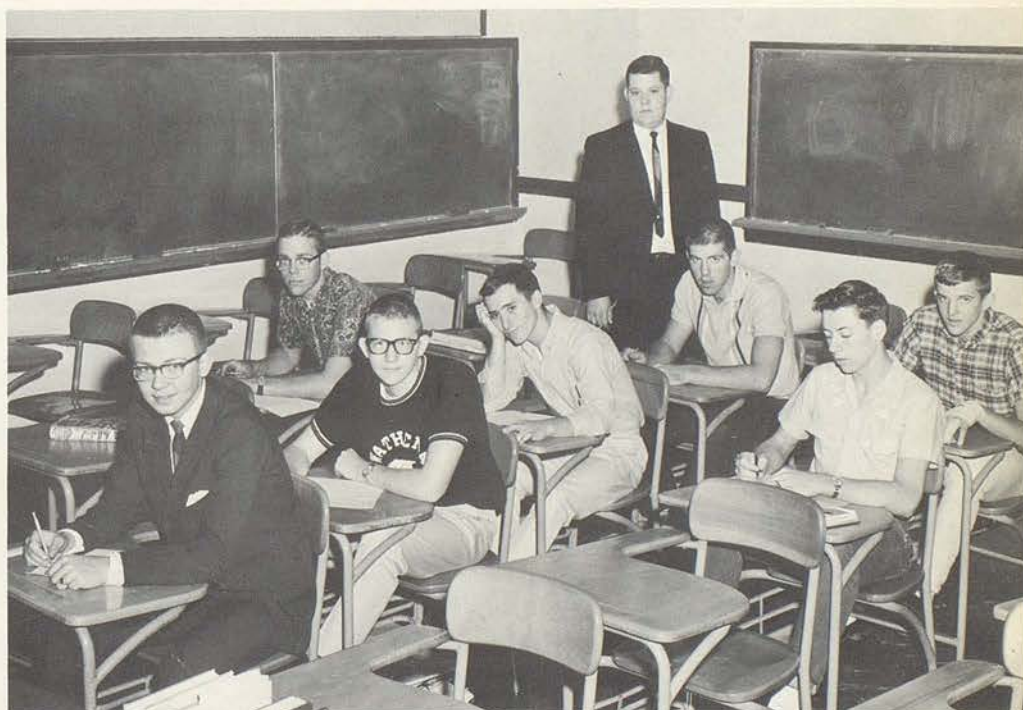
**MRS. SISK'S ALGEBRA I CLASS—**

Math is fascinating as it makes us more appreciative of the everyday world about us. Working to learn the fundamental principles in Algebra I, the class has found this a course in finding  $x$  and  $y$ .



**WILLIAM WIELAND**

B. S. Degree  
 Ks. State University  
 Algebra I-II  
 Trigonometry  
 Geometry  
 Psychology  
 Economics



**MR. WIELAND'S TRIGONOMETRY CLASS—**

Questions on this test are puzzling even to the best students. Trigonometry, a mixture of geometry and algebra, is an advanced course offered to math students.

THE UNIVERSITY OF TEXAS AT AUSTIN

LIBRARY

1968

LIBRARY

1968





**MRS. KNELLER'S HOME ECONOMICS CLASS—**

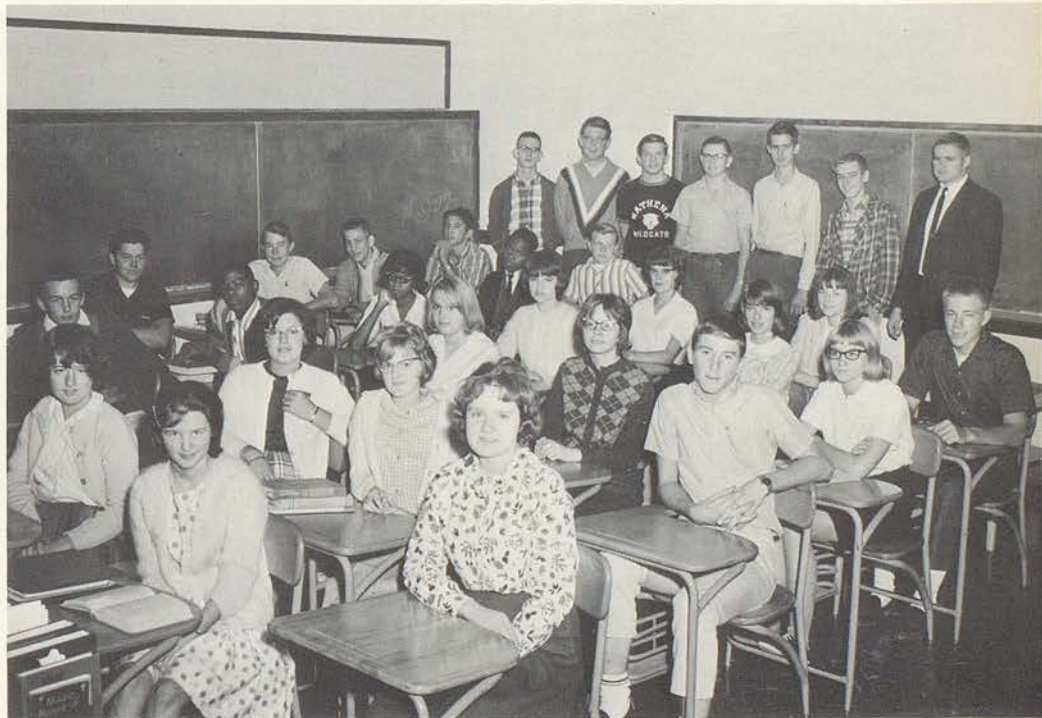
Mrs. Kneller and members of her Home Economics II class are pictured here. The planning, preparation, and serving of a formal dinner is an essential project of the class.



**DOROTHY KNELLER**  
 B. S. Degree  
 Kansas State College  
 Home Ec. I-II  
 English II  
 Gen. Science  
 Family Living



**LYLE WALTER**  
 B. A. Degree  
 Ks. Wesleyan University  
 Physical Education I-II  
 World History  
 Constitution  
 Athletics



**MR. WALTER'S HISTORY CLASS—**

This subject provides a background for the understanding of foreign policies and government systems in other countries. Students try to comprehend opposing points of view in both foreign and domestic affairs.

THE UNIVERSITY OF TEXAS AT AUSTIN

LIBRARY

1968

LIBRARY

1968



**MRS. THOMAS' PHYSICAL EDUCATION CLASS—**

Physical fitness and development of grace and poise through dancing are class objectives. The Gym Revue in the spring consists of skills, routines and rhythms learned in class.



**LEAH THOMAS**

B. S. Degree  
 Kansas State College  
 English IV  
 Physical Education I-II  
 Library



**MARGUERITE DOUGHERTY**

B. A. Degree  
 University of Kansas  
 Latin I-II  
 Spanish I-II  
 American History



**MRS. DOUGHERTY'S LATIN I CLASS—**

Various languages develop universal understanding through knowledge. These students learn about the once powerful Roman Empire and its contribution to our civilization.

Compliments of **MANVILLE'S GARAGE AND SCHUMAN'S CAFE**

THE UNIVERSITY OF TEXAS AT AUSTIN

LIBRARY

1968

LIBRARY

1968



**RUTH WEHRMAN**  
 B. A. Degree  
 Washburn College  
 Typing I-II  
 Bookkeeping  
 Shorthand II

**MRS. WEHRMAN'S TYPING II CLASS—**

Ready . . . Type: The clatter of machines, the ringing of bells, the quick furious strokes of the fingers. Commerce students work diligently to gain speed and accuracy.



**JOSEPHINE KIEFER**  
 B. S. Degree  
 Mt. St. Scholastica College  
 M. S. Degree  
 Ks. State Teachers College  
 Shorthand I  
 English I  
 Guidance



**MISS KIEFER'S SHORTHAND I CLASS—**

Brief forms, recall charts, check lists—so the lesson begins. This training is an aid to many who find jobs in the business world. In other fields also, this skill could be practical and helpful.

THE UNIVERSITY OF TEXAS AT AUSTIN

LIBRARY

1968

LIBRARY

1968



**MISS RITTER'S MIXED ENSEMBLE—**

Among the sounds one may hear in school are those of the music department practices. Members use their talents to perform for school functions and outside organizations.



**KAREN ANN RITTER**

B. M. E. Degree  
Mt. St. Scholastica College  
Band  
Vocal



**STUDENT COUNCIL —** The Student Council promotes a better understanding among the students and faculty members and works for the general welfare and betterment of the school. Mrs. Thomas is the sponsor.

Compliments of  
**HANSEN-MEAD MOTOR CO.**

THE UNIVERSITY OF TEXAS AT AUSTIN

LIBRARY

1968

LIBRARY

1968





## OFFICE PERSONNEL

Marjorie Higdon, school district clerk and secretary, efficiently carries out the many duties included in her busy office schedule.



Kay Schultz, school secretary during September, sells lunch cards to two waiting students.



Guidance

Department

Seniors are faced with pressing questions: What to do? What to be? These girls are learning about the importance of the American Testing Program in planning for advanced education. The Student Information Booklet explains how to register and on what dates to take the A.C.T.

Compliments of  
**BILLY'S RESTAURANT**

THE UNIVERSITY OF TEXAS AT AUSTIN

LIBRARY

1968

LIBRARY

1968



*eniors*

THE UNIVERSITY OF TEXAS AT AUSTIN

LIBRARY

1968

LIBRARY

1968



### PRESIDENT

#### Homer Ritter

- Football 1, 2, 3, 4
- Basketball 1, 2, 3, 4
- Track 1, 2, 3, 4
- W-Club 1, 2, 3, 4
- Student Council 2, 4
- Class President 2, 4
- Student Council Pres. 4
- Junior Play 3
- Senior Play 4
- Government Day 3
- Boys' State Delegate 3
- Community Council Rep. 2
- Tri-Captain Football 4
- Football Escort 4
- Yearbook (Bus. Mgr.) 4

**GUIDING  
GOVERNING  
GRADUATING**

### Larry Hart

- Transferred from Riley, Kansas 4
- Boys' Chorus 4
- Mixed Chorus 4
- Mixed Ensemble 4
- W-Club 4
- Football 4
- Basketball 4
- Track Trainer 4
- Senior Play 4
- Class Vice-President 4
- Yearbook Staff 4



### VICE-PRESIDENT

#### Geneva Wollnick

- Home Ec. Award 2
- Pep Club 1, 2
- Class Secretary 3, 4
- Yearbook Staff 4



### SECRETARY

#### Betty Walter

- Band 1
- Government Day 3
- Girls' State Alternate 3
- Pep Club 1, 2, 3, 4
- Pep Club President 4
- Class Treasurer 4
- Junior Play 3
- Senior Play 4
- Football Homecoming Queen 4
- Girls' P.E. Award 2
- Yearbook Staff 4 (Co-Editor)



### TREASURER

#### Dennis Lester

- Football 2, 3, 4
- Basketball 1, 2, 3, 4
- Track 1, 2, 3, 4
- Band 1, 2, 3, 4
- W-Club 1, 2, 3, 4
- Junior Play 3
- Senior Play 4
- Boys' State Delegate 3
- Government Day 3
- Student Council 2, 3, 4
- V-Pres. Student Council 4
- Dance Band 2, 3
- Football Escort 4
- F.C.A. Rep. 4
- Community Council Rep. 4
- K-36 One Act Play (Stage Crew) 3
- Yearbook Staff 4

**CLASS OF 1966**



### STUDENT COUNCIL

Today is the tomorrow we dreamed of yesterday. This is our year, the year we have written on our textbooks, our notebooks, and papers. This is the year of our graduation.

Compliments of **BECK'S CAFE**

THE UNIVERSITY OF TEXAS AT AUSTIN

LIBRARY

1968

LIBRARY

1968



**Linda Bear**

Pep Club 1, 2  
Senior Play 4  
Yearbook Staff 4



**Glenda Abbett**

Girls' Chorus 1, 2  
Pep Club 1, 2, 3, 4  
Mixed Chorus 1, 2  
Junior Play 3  
Senior Play 4  
(Student Director)  
Yearbook Staff 4



**Sherye Bittiker**

Band 1, 2  
Pep Club 1, 2  
Girls' Chorus 1, 2, 3, 4  
Majorette 3, 4  
Drum Majorette 4



**Gerald Caton**

Transferred: Lafayette  
High School, St. Jo, Mo.  
Basketball 2, 4  
Track 4  
Yearbook Staff 4



**James Drake**

Football 4  
Track 2, 3, 4  
Basketball 1, 4  
Track Manager 3  
State Scholarship Contest:  
Hon. Men., English 2  
Government Day 3  
Class President 3  
Senior Play 4  
W-Club 4  
Sec.-Treas., W-Club 4  
Yearbook Staff 4



**Sharon Crittendon**

Girls' Chorus 1, 2, 3, 4  
Mixed Chorus 1, 2, 3, 4  
Pep Club 1, 4  
Yearbook Staff 4

THE UNIVERSITY OF TEXAS AT AUSTIN

LIBRARY

1968

LIBRARY

1968





**George Eisiminger**

Football 1, 2, 3, 4  
Basketball 1, 2, 3, 4  
Track 1, 2, 3, 4  
Student Librarian 2  
Community Council Rep. 2  
Class Pres. 1  
W-Club (Pres.) 4  
F.C.A. Rep. 4  
Junior Play (Stage Crew) 3  
Senior Play 4  
K-36 One Act Play  
(Stage Crew)  
Mixed Ensemble 3, 4  
Boys' Chorus 3  
Mixed Chorus 3, 4  
State Music Festival 3, 4  
District Music Festival 3  
Football Tri-Captain 4  
Football Homecoming  
Escort 4  
Government Day 3  
Christmas Candidate 3  
Boys' State Alternate 3  
Yearbook Staff 4

**Norman Evans**

Transferred from  
Lawrence, Kansas  
Track 3, 4  
Basketball 3, 4  
Boys' Chorus 4  
Mixed Chorus 4  
Senior Play 4



**James Fulcher**

Track 3  
Senior Play 4  
(Stage Crew)  
Football 4  
Boys' State Delegate 3



**Michael Gabriel**

Band 4  
Track 4  
Junior Play 3  
(Stage Crew)  
Senior Play 4  
(Stage Crew)  
K-36 One Act Play  
(Stage Crew)  
Boys' Chorus 4



**Sharon Gingery**

Pep Club 1, 2, 3, 4  
Girls' Chorus 1  
Yearbook Staff 4



**Loren Hatfield**

Transferred from  
Gunnison, Colo.



THE UNIVERSITY OF TEXAS AT AUSTIN

LIBRARY

1968

LIBRARY

1968



**Rose Mary Hart**

Girls' Chorus 1, 2  
Mixed Chorus 1, 2  
Yearbook Staff 4



**Karen Harman**

Band 1, 2, 3, 4  
Girls' Chorus 1, 2, 3, 4  
Mixed Chorus 1, 2, 3, 4  
Mixed Ensemble 1, 2, 3, 4  
Girls' Trio 3, 4  
Girls' Sextette 1, 2  
Dance Band 2  
Pep Club 1, 2, 3, 4  
Cheerleader 1, 2, 3, 4  
Basketball Queen Att., 1  
Football Queen Att., 4  
Girls' State Delegate 3  
Junior Play 3  
(Student Director)  
Senior Play 4  
District Music  
Festival 1, 2, 3, 4  
State Music  
Festival 1, 2, 3, 4  
Government Day 3  
Class V-Pres., 1  
Yearbook Staff 4



**George Hartman**

Track 3, 4  
Yearbook Staff 4



**John Hartman**

Transferred from  
Ft. Morgan, Colo., 4  
Basketball 4  
Track 4  
Yearbook Staff 4



**Allen Hewins**

Football 1, 2, 3, 4  
Basketball 1, 2, 3, 4  
Track 1, 2, 3, 4  
W-Club 2, 3, 4  
Student Council 3, 4  
Community Council Rep. 3  
Tri-Captain Football 4  
Basketball Escort 3  
State Scholarship Contest  
Hon. Men. 2  
Boys' State Delegate 3  
Yearbook (Bus. Man.) 4



**Milton Hartman**

Football 1, 2, 3, 4  
Basketball 1  
Track 1, 2, 3  
Government Day 3  
Junior Play 3  
Yearbook Staff 4

THE UNIVERSITY OF TEXAS AT AUSTIN

LIBRARY

1968

LIBRARY

1968



**Judith Hewins**

Band 1, 2, 3, 4  
Girls' Chorus 1, 2, 3, 4  
Mixed Chorus 1, 2, 3, 4  
Mixed Ensemble 1, 2, 3, 4  
Sextette 1, 2  
Trio 3, 4  
Clarinet Trio 1, 2, 3  
Dance Band 2  
District Festival 1, 2, 3  
State Music  
Festival 1, 2, 3, 4  
Government Day 3  
Junior Play (Prompter) 3  
Senior Play 4  
Pep Club 1, 2, 3, 4  
Cheerleader 4  
Pep Club Treasurer 4  
Yearbook Staff 4

**David Johnson**

Transferred: Central High  
School, St. Joseph, Mo. 1  
Boys' Chorus 2  
Basketball 2, 3  
Junior Play 3  
(Sound Effects)  
Yearbook 4



**William Kiehnhoff**

Football 1, 2, 3, 4  
Track 1, 2, 3, 4  
Band 1, 2  
W-Club 4  
State Scholarship Contest  
Hon. Men. Algebra I 1  
English I 1  
Geometry 2  
F.C.A. Rep. 4



**Melinda Madinger**

Girls' Chorus 1, 2, 3  
Mixed Chorus 1, 2, 3  
Sextette 1, 2  
State Music Festival 2  
District Music Festival 1, 2  
Pep Club 1, 2, 3, 4  
Band 1, 2  
Junior Play 3  
Senior Play 4  
Christmas Queen Cand., 1  
Girls' State Alternate 3  
Yearbook Staff 4



**Ruth McVey**

Pep Club 1, 2, 3, 4  
Girls' Chorus 1, 2, 3, 4  
Mixed Chorus 1, 2, 3, 4  
Majorette 3, 4  
Senior Play 4  
Government Day 3  
Yearbook Staff 4

**James Miller**

Football 1, 2, 4  
Basketball Trainer 1, 2, 3  
Track 1, 2, 3  
Christmas King Cand. 1  
W-Club 4  
Boys' State Alternate 3  
Junior Play 3  
(Stage Crew)  
Senior Play 4  
(Stage Crew)  
Yearbook Staff 4



THE UNIVERSITY OF TEXAS AT AUSTIN

LIBRARY

1968

LIBRARY

1968



**Betty Minsch**

Mixed Ensemble 4  
Majorette 4  
Mixed Chorus 1; 2, 3, 4  
Girls' Chorus 1, 2, 3, 4  
Pep Club 1, 2, 3, 4  
Pep Club Secretary 4  
Government Day 3  
Yearbook Staff 4



**Roberta Miller**

Pep Club 4  
Yearbook 4



**Carolyn Newton**

Pep Club 1, 2, 3, 4  
Girls' Chorus 3, 4  
Mixed Chorus 3, 4  
Majorette 4  
Girls' P.E. Award 2, 3



**William Nold**

Basketball 1, 2, 3, 4  
Track 2, 3, 4  
Football 1, 3, 4  
Football Man. 2  
Band 1  
Boys' State Delegate 3  
W-Club 2, 3, 4  
Vice-Pres. W-Club 4  
Yearbook Staff 4



**Fred Rohrer**

Track 3, 4  
W-Club 3, 4  
Yearbook Staff 4



**Mark Nold**

Basketball 1, 2, 3, 4  
Football 1  
Track 1, 2, 3, 4

THE UNIVERSITY OF TEXAS AT AUSTIN

LIBRARY

1968

LIBRARY

1968





**Lonnie Sollars**

Band 1, 2, 4  
Mixed Chorus 1, 2, 3, 4  
Boys' Chorus 1, 2, 3, 4  
Mixed Ensemble 2, 3, 4  
Football 1, 2  
Basketball 1, 3, 4  
Track 1, 2  
District Music Festival 2, 3  
State Music Festival 3, 4  
Government Day 3  
Junior Play 3  
W-Club 4  
Yearbook Staff 4



**Kathleen Silvy**

Pep Club 2, 3, 4  
Junior Play 3  
Government Day 3  
Yearbook Staff 4  
(Co-Editor)



**Regina Staudenmaier**

Transferred: Troy, Kansas  
Pep Club 4  
Girls' Chorus 4  
Mixed Chorus 4  
Band 4  
Yearbook Staff 4

**Class Motto:** Today we follow; Tomorrow we lead

**Class Colors:** Royal Blue and Gold

**Class Flower:** White Carnation

**Sponsors:** Marguerite Dougherty, Lyle Modellmog and Jerry McCloud

**May 15, 1966:** Baccalaureate Service

**May 17, 1966:** Senior Class Night

**May 19, 1966:** Commencement



**Charles (Robert) Studer**

Track 4  
Yearbook Staff 4

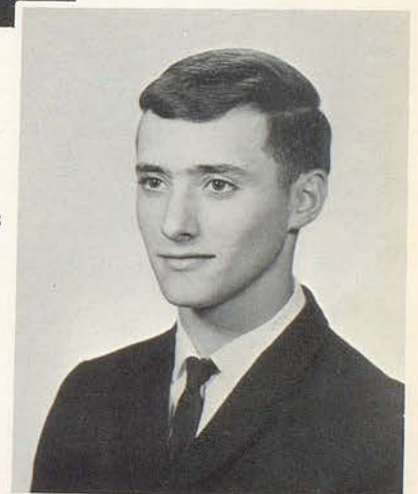


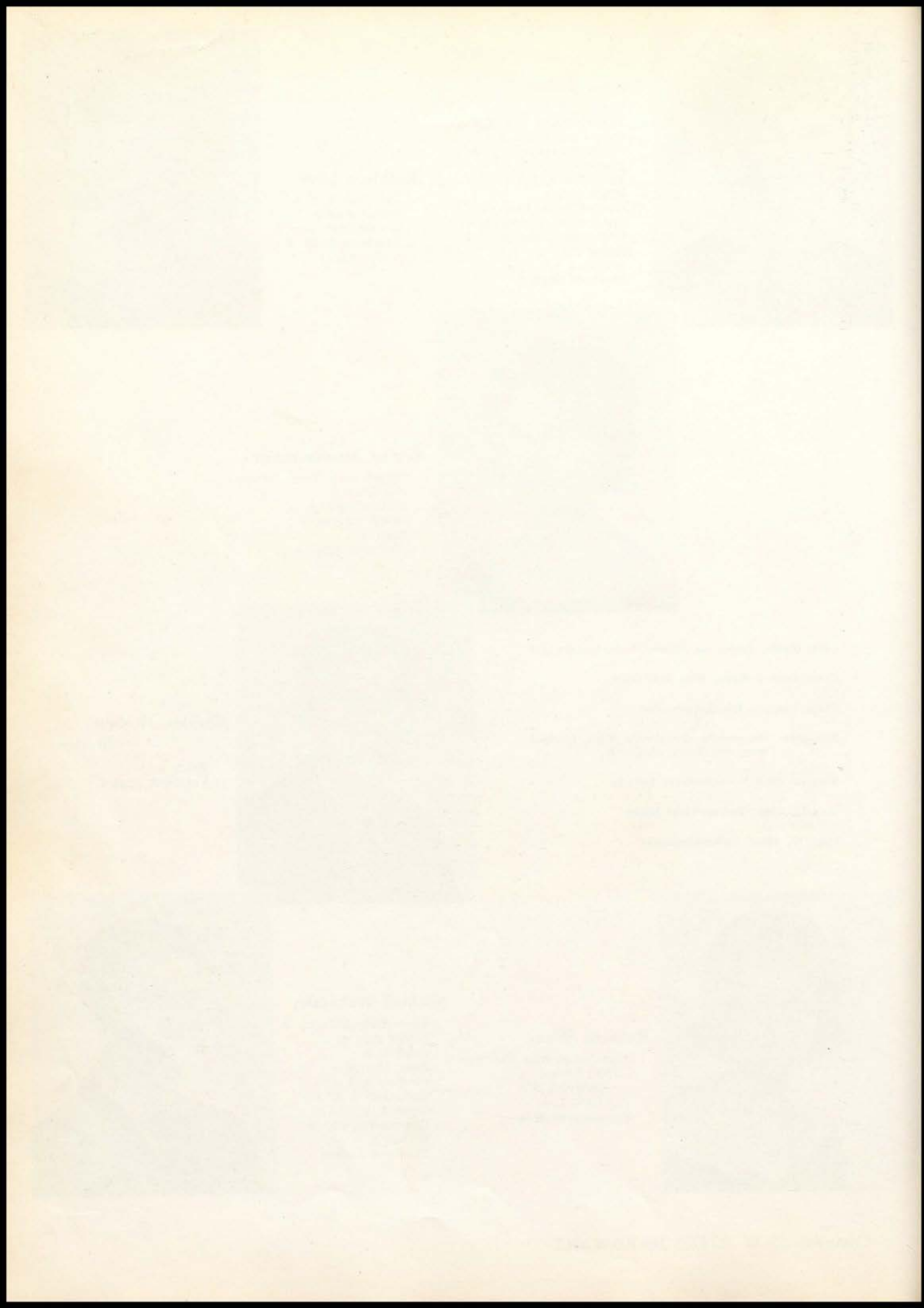
**Rebecca White**

Transferred from Cardwell High School, Cardwell, Mo.  
Pep Club 3, 4  
Yearbook Staff 4

**Michael Wakeman**

Boys' State Delegate 3  
Senior Play 4  
Band 1, 2  
Boys' Chorus 1  
Football 1, 2, 3, 4  
Basketball 1, 2, 3  
Track 1, 2, 3, 4  
Government Day 3  
W-Club 4  
Yearbook Staff 4







**Susan Rolfe**

Band 1, 2, 3  
Pep Club 1, 2, 3  
Junior Play 3  
State Music Festival 1, 2  
Dance Band 1, 2  
Let's Dance Contest 3  
Yearbook Staff 4

**Phyllis (Bradshaw)**

**Schmille**

Mixed Chorus 1, 2  
Pep Club 1, 2  
Girls' Chorus 1, 2  
Band 1, 2  
District Music Festival 1, 2  
State Music Festival 1, 2  
Sextette 1, 2  
Girls' P. E. Award 2  
Yearbook Staff 4



**David Schurr**

Transferred from Elkhart  
Public School,  
Hays, Kansas 4  
Football 4



**Janeth Shields**

Band 1, 2, 3, 4  
Mixed Ensemble 1, 2, 3, 4  
Girls' Chorus 1, 2, 3, 4  
Mixed Chorus 1, 2, 3, 4  
Clarinet Trio 3  
Girls' Sextette 1, 2  
Girls' Trio 3, 4  
State Music  
Festival 1, 2, 3, 4  
District Music  
Festival 1, 2, 4  
Class Treas., Secy., 1, 2  
Dance Band 2  
Cheerleader 1, 2, 3, 4  
Head Cheerleader 4  
Football Queen  
Attendant 1, 2, 4  
Basketball Queen  
Attendant 3  
Junior Play 3  
Senior Play 4  
Pep Club 1, 2, 3, 4  
Girls' State Delegate 3  
Yearbook Staff 4

**John Shalz**

Football 1, 4  
Basketball 1, 4  
Track 1  
Junior Play 3  
(Stage Crew)  
Senior Play 4  
Football Trainer 4  
Basketball Trainer 4  
Yearbook Staff 4



**Harry Shane**

Transferred: Benton High  
School, St. Joseph, Mo. 2  
Boys' Chorus 3, 4  
Band 4  
W-Club 2, 3, 4  
Football 4  
Track 2, 3, 4  
Basketball 3, 4  
Mixed Ensemble 3, 4  
Mixed Chorus 3, 4  
District Music Festival 3  
State Music Festival 3, 4  
Football Trainer 3  
Yearbook Staff 4



THE UNIVERSITY OF TEXAS AT AUSTIN

LIBRARY

1968

LIBRARY

1968



We are the Seniors,  
Mighty, Mighty, Seniors



Boys State Representatives talk over experiences. Jim Fulcher, Dennis Lester, Homer Ritter, Bill Nold, Mike Wakeman, Allen Hewins.



Senior girls getting the feel of graduation caps and gowns.

## SENIOR ACTIVITIES



Dennis Lester and George Eisinger, team captains of a successful magazine drive. Betty Walter, business manager.



Fred Rohrer, holding travel clock, his award for top salesman.



Karen Harman and Jan Shields, Girls' State Representatives.



Senior boys carry coffin to bury the Midway Eagles Oct. 22.



Senior Concession stand, fall festival.

THE UNIVERSITY OF TEXAS AT AUSTIN

LIBRARY

1968

1968

1968

# SENIOR HALL OF FAME

Selected by the Class of '66



Girl and Boy with Personality Plus: Jan Shields and Homer Ritter.



Best Natured Girl and Boy: Geneva Wollnick and George Eisiminger.



Most Likely to Succeed: Kathy Silvy and Jim Drake.



Most Intelligent Girl and Boy: Betty Walter and Allen Hewins.



Class Beauty and Handsomest Boy: Ruth McVey and Dennis Lester.

*Fame is where you find it.*

THE UNIVERSITY OF TEXAS AT AUSTIN

LIBRARY

1968

LIBRARY

1968



# CLASS



## FRESHMAN LAND — 1962-1963

# HISTORY

All aboard for Senior Land! The Luxury Liner scheduled for four eventful stops had its starting point in August, 1962, with 41 members as its passengers. Now we were ready for the first stop at Freshman Land! The passengers were Glenda Abbett, Linda Bear, Sherye Bittiker, Phyllis Bradshaw, Linda Burdge, Naomi Clinton, Sharon Crittendon, James Drake, Norman Evans, Charles Fulcher, Lawrence Gabriel, Sharon Gingery, Rose Hart, George Hartman, Milton Hartman, Allen Hewins, Judith Hewins, William Kiehnhoff, Dennis Lester, Melinda Madinger, Ruth McVey, James Miller, Roberta Miller, Betty Minsch, Carolyn Newton, Mark Nold, William Nold, Homer Ritter, Freddie Rohrer, Susan Rolfe, Kathleen Silvey, John Shalz, Lonnie Sollars, Charles Studer, Philip Studer, Michael Wakeman, Betty Walter and Geneva Wollnick. At the first deck meeting we felt the need of ship officers and chose George Eisiminger as Chief Mate, assisted by Karen Harman, Second Mate. To guard our funds and keep the ship's log was Jan Shields. Linda Burdge was chosen to keep us in contact with headquarters. Our guides in this adventure land were Mrs. Corder and Mr. Vilander.

Jan Shields was elected football queen attendant and Karen Harman, basketball queen attendant. Linda Burdge, Karen Harman, and Jan Shields were elected as Cheerleaders for the crew. Our King and Queen candidates for the annual Christmas Dance held on deck by the seniors were James Miller and Melinda Madinger.

For entertainment we were allowed two parties; so for the first one we went to a movie, and in the second part of our voyage we had a picnic.

## SOPHOMORE LAND — 1963-1964

After many months of clear sailing, and a few jolts and bumps, when encountering rough waters, we reached the second stop, that of Sophomore Land. During this interval we lost Naomi Clinton. However, we gained Gerald Caton, Steven Morey, David Johnson, and Harry Shane. When the deck meeting was held, Homer Ritter was elected as Chief Mate assisted by Linda Burdge as Second Mate; to guard our funds was Karen Harman; Jan Shields was chosen to keep the log again; and George Eisiminger was chosen to keep us in contact with headquarters. Our guides were Mrs. Leah Thomas and Mr. Jerry McCloud.

Jan Shields was selected as football queen candidate and Linda Burdge was basketball queen candidate. Karen Harman, Jan Shields, and Linda Burdge were elected as Cheerleaders again with Linda Burdge as head cheerleader. Homer Ritter and Linda Burdge were elected candidates for King and Queen at the senior's annual Christmas Dance. Melinda Madinger, Phyllis Bradshaw, Judy Hewins, Linda Burdge, Karen Harman and Jan Shields represented us in the State Music Festival.

For our first party we went bowling and to the Snow-White Restaurant to eat. In the second part of our voyage we went to a show again. At the end of Sophomore Land the passengers had grown both in stature and intelligence.

## JUNIOR LAND — 1964-1965

Much more smooth and happy sailing was our approach into Junior Land. We lost some of our passengers during this important stop — Philip Studer and Phyllis Bradshaw. But we gained two new crew members, Warren Lewis and Becky White. Now chief officers were: First Mate, James Drake; Second Mate, Homer Ritter; Geneva Wollnick, Keeper of the Ship's Log; guard of the funds was Linda Burdge; and Allen Hewins kept us in contact with headquarters. Our guides on this educational journey were Mrs. Leah Thomas and Mr. Jerry McCloud.

During this year we had a glimpse into Drama Land by presenting our first play "Judy Pulls the Curtain." Our play cast consisted of Lonnie Sollars, Linda Burdge, Betty Walter, Jan Shields, Dennis Lester, Junior Hartman, Warren Lewis, Glenda Abbett, Homer Ritter, Melinda Madinger, Kathy Silvy, and Susan Rolfe.

Linda Burdge, Jan Shields, and Karen Harman were elected as cheerleaders again. Linda Burdge represented us in the K-36 League Play, "Heat Lightning." Jan Shields was basketball queen candidate, and Marilyn Young and George Eisiminger were chosen as Queen and King candidates for the annual Christmas Dance given by the seniors. Jim Fulcher, Homer Ritter, Bill Nold, Dennis Lester, Allen Hewins, and Mike Wakeman were selected to go to Boy's State, and Jan Shields and Karen Harman went to Girl's State. This time for our party we stayed on deck and had a gym party. The social highlight of our voyage so far was that important event, the Junior-Senior Banquet. The theme was "May Time" with the deck decorated as a summer garden with gold and green for a color scheme. Everyone had plenty to do and we all had the times of our lives. Some of the sophomore girls and boys served as waiters. The seniors returned the honor with a picnic on deck.

## SENIOR LAND 1965-1966

At last the ocean liner made its memorable long anticipated entrance into the Harbor of Senior Land. During this last interval we lost one of our crew, Linda Burdge. But we gained Larry Hart, Loren Hatfield, John Hartman, Phyllis Schmilke, David Schurr and Regina Staudenmaier. Our guides for this last voyage were Mrs. Marguerite Dougherty, Mr. McCloud, and Mr. Lyle Moddelmog. We were helped over our difficult passages by the capable and experienced officers: First Mate, Homer Ritter; Second Mate, Larry Hart; Ship's Log, Geneva Wollnick. In charge of our funds, Betty Walter, and Dennis Lester kept us in contact with headquarters. At the Homecoming this year Betty Walter was crowned "Queen" by Homer Ritter and the attendants from our crew were Jan Shields and Karen Harman. The escorts were Dennis Lester, Allen Hewins and George Eisiminger. Homer Ritter, Allen Hewins and George Eisiminger were tri-captains. Judy Hewins, Jan Shields and Karen Harman were elected as Cheerleaders with Jan Shields as head cheerleader.

In Drama Land we presented the play, "Finders Creepers," starring Larry Hart, Mike Wakeman, Jan Shields, Ruth McVey, Betty Walter, Karen Harman, Dennis Lester, Melinda Madinger, Homer Ritter, John Shalz, Judy Hewins, George Eisiminger, Linda Bear and James Drake.

Our treasures this year were found in a concession stand at the Fall Festival and by selling magazine subscriptions.

Highlights on the last part of our journey were Junior-Senior Banquet, Senior's return picnic, Baccalaureate May 15, Class Night May 17, and the most important Night of all, our Commencement on May 19, 1966. Now we have reached that time from which none of us will carry on together, the voyage of life. Now we are leaving Wathena High regretfully, but with new hope and understanding in life.



THE UNIVERSITY OF TEXAS AT AUSTIN

LIBRARY

1968

LIBRARY

1968



*uniors*

THE UNIVERSITY OF TEXAS AT AUSTIN

LIBRARY

1968

LIBRARY

1968



Thresa Kiefer  
Vice President

STEERING  
STRENGTH  
STAMINA



Alan Boeh  
President

JUNIORS



Ruth Wollnick  
Secretary



Duane Thomas  
Treasurer



Junior officers meet to make some important decisions.



Blaine Thomas  
Student Council



Ronald Bahr



John Bear



Stephen Boeh



Lee Brandt



James Caton



Kenneth Christopher



Nancy Coursen



Mary Ann Delzeit



Warren Davis

THE UNIVERSITY OF TEXAS AT AUSTIN

LIBRARY

1968

LIBRARY

1968

**CLASS**

**OF**

**1967**



Rex Dishon



Janette Elder



Melanie Euler



Lynda Fulcher



Steven Gingery



Juniors admire class rings which arrived the first day of school.



Julie Grable



Linda Hartman



Leroy Hewins



Carolyn Kline



Vivian Kline



Betty Lake



Jo Lieftring



Phyllis McVey



Tom Miller

Compliments of **MILLER CONSTRUCTION COMPANY AND LYONS OIL COMPANY**

THE UNIVERSITY OF TEXAS AT AUSTIN

LIBRARY

1968

LIBRARY

1968



**ONE  
MORE  
YEAR**



Dawson Minsch



William Orcutt



Sandra Ramseier



Brycen Rice



Carolin Riggs



Richard Schultz



Lila Schuman



Dennis Sharp



Nelita Slaughter



Philip Studer



Wayne Staudenmaier



Frances Walker



Janice Ward



Jim Walter



Susan Weber



Joyce Wilson



Fred Werner

Class Sponsors:  
Mrs. Sisk  
Mr. Wieland

THE UNIVERSITY OF TEXAS AT AUSTIN

LIBRARY

1968

LIBRARY

1968



*ophomores*

THE UNIVERSITY OF TEXAS AT AUSTIN

LIBRARY

1968

LIBRARY

1968



Richard Hartman  
Vice President

LEADING  
LEARNING  
LIVING



Terry Hart  
President

SOPHOMORES



Deborah Schuster  
Secretary



Nancy Bauman  
Treasurer



Sophomore officers guide second year students in their projects.



Jo Ellen Hewins  
Student Council



Richard Bauman



Lonnie Bear



Gary Bittiker



Linda Benitz



Marilyn Boeh



Barbara Bottiger



Joan Butcher



John Butcher



Karen Caton



Ruth Crane

Compliments of PEPSI-COLA BOTTLING COMPANY

THE UNIVERSITY OF TEXAS AT AUSTIN

LIBRARY

1968

LIBRARY

1968

**CLASS**

**OF**

**1968**



John Crittendon



David Dishon



Dana Drake



Richard Israel



Romona Gabriel



Sophomore girls look through reference books to get extra information for reports.



Carol Goin



Gerald Goin



James Hart



Brenda Handley



Kathleen Hewins



Danny Johnson



Deborah Juhl



David Juhl



Gary Laipple



Dennis Morey

THE UNIVERSITY OF TEXAS AT AUSTIN

LIBRARY

1968

LIBRARY

1968



**TWO  
MORE  
YEARS**



Lee Miller



Charles Morgan



David Newton



Charles Nimtzt



Lynn Nold



Larry Rohrer



Janice Rotterman



Steven Schultz



Neil Shalz



Walter Skinner



Carl Silvey



Patricia Studer



Pamela Thompson



Lambert Vertin



Connie Ward



Janet Weber

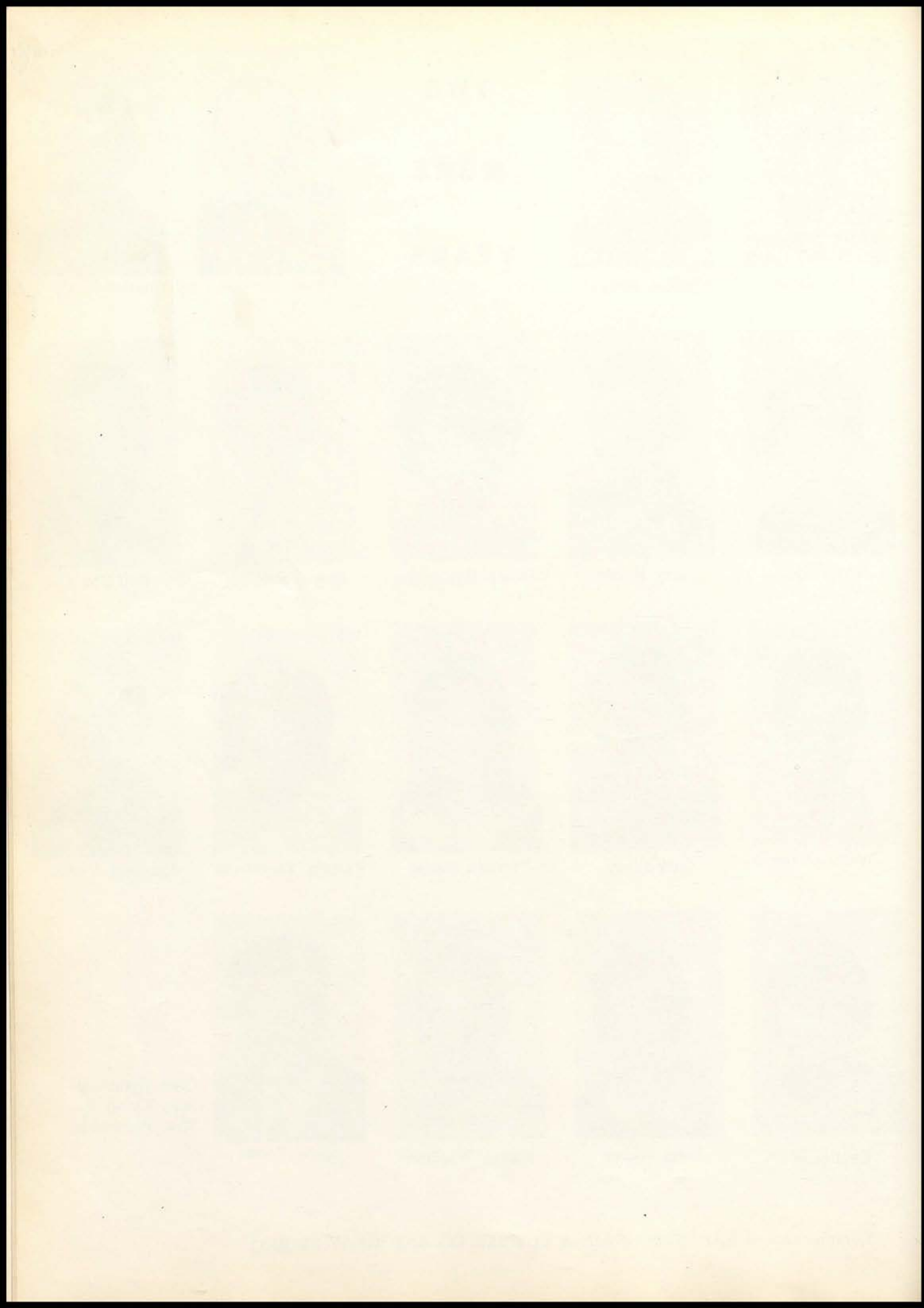


Wayne Wiedmer



Byron Young

Class Sponsors:  
Miss Kiefer  
Mrs. Wehrman





*reshmen*

THE UNIVERSITY OF TEXAS AT AUSTIN

LIBRARY

1968

LIBRARY

1968



Jeffrey Bohr  
Vice President

BEGINNING  
BEWILDERED  
BLUSTERING



Kenneth Walker  
President

FRESHMEN



Deborah Herring  
Secretary



Pat Gabriel  
Treasurer



These officers have the responsibility of guiding freshmen activities.



Joyce Walter  
Student Council



Alan Bahr



Vickie Bear



Donna Benitz



Robert Bradshaw



Lois Caton



Anita Chase



Dennis Coursen



Gayla Crittendon



Linda Culp



Erma Davis

THE UNIVERSITY OF TEXAS AT AUSTIN

LIBRARY

1968

LIBRARY

1968



Ruth Davis



Ronnie Gabriel



Connie Gladden



John Grable



Martin Hewins



Helen Hunter



Mr. Hart helped freshmen plan courses for their first year.



Wayne King

# CLASS OF 1969



Donald Manville



Phyllis Miller



Linda Minsch



Roy Moak



Tom Morey



Kathy Moskau



Diana Newton



Dennis Newton



June Nold



James Orcutt

Compliments of GRABLE'S BARBER SHOP AND DARV'S SINCLAIR STATION

THE UNIVERSITY OF TEXAS AT AUSTIN

LIBRARY

1968

LIBRARY

1968



**THREE  
MORE  
YEARS**



Kathleen Paden



Debra Petitt



David Polley



Barbara Riggs



Ellen Schultz



Ronald Rotterman



Steven Shellenberger



Richard Schuman



Andrew Shane



Karen Silvey



Bruce Sheridan



Jo Lynn Staudenmaier



Cathy Studer



John Silvy



Dianna Weber



Mabel Wheeler



Mike Thompson



Alveda White



Roger White

Sponsors: Mr. Walter  
Miss Ritter

Compliments of WESTERN DAIRY AND ICE CREAM CO. AND WATHENA FEED MILL

THE UNIVERSITY OF TEXAS AT AUSTIN

LIBRARY

1968

LIBRARY

1968



*thletics*

THE UNIVERSITY OF TEXAS AT AUSTIN

LIBRARY

1968

LIBRARY

1968

# VARSITY FOOTBALL TEAM



Front row: Coach Modellmog, H. Shane, B. Nold, G. Eisiminger, D. Schurr, L. Hart, J. Miller, J. Hartman, M. Wakeman, D. Lester, A. Hewins, H. Ritter, B. Kiehnhoff, J. Fulcher, J. Drake and Coach Walter.

Second row: B. Rice, S. Gingery, A. Boeh, N. Shalz, D. Schultz, T. Hart, W. Wiedmer, G. Goin, R. Hartman, D. Newton, S. Boeh, B. Thomas, J. Walter, D. Thomas and L. Miller.

Third row: D. Drake, D. Juhl, G. Laipple, D. Dishon, J. Butcher, C. Silvey, C. Morgan, J. Crittendon, B. Vertin, C. Nimtz, R. Dishon, J. Bear, M. Nold, J. Shalz and L. Hewins.



The Wathena football team completed the 1965 season with a 7-2 record, winning second place in the K-36 League.

Each player on the team should be commended for his fine effort on behalf of Wathena High. The varsity spends long hours in practice sessions and generates school spirit, enthusiasm, and interest in all competition.

The athletic program is one of the most popular programs of the school.

## SCOREBOARD

Wathena	Opponent	Score
20	Valley Falls	0
40	Oskaloosa	0
7	Elwood	6
46	Troy	0
20	Sts. Peter & Paul	0
19	Midway	6
13	Hiawatha	20
19	Highland	20
14	Holton	0



Asst. Coach Walter



Coach Modellmog

Compliments of **MELVIN M. GOIN** Pfister milo and seed corn and **RICHARD SCHULTZ** Tomco Genetic Giant corn and sorghum

THE UNIVERSITY OF TEXAS AT AUSTIN

LIBRARY

1968

LIBRARY

1968



J. MILLER  
Tackle



J. DRAKE  
End



G. EISIMINGER  
Halfback



H. RITTER  
Tackle



D. LESTER  
End



H. SHANE  
Halfback



M. HARTMAN  
Guard



M. WAKEMAN  
Quarterback



A. HEWINS  
End



D. SCHURR  
Guard



L. HART  
Center



B. NOLD  
Guard



B. KIEHNHOFF  
Tackle



# SENIORS



J. FULCHER  
Tackle

Compliments of **KLINE'S LAUNDROMAT AND MILLER'S REXALL PHARMACY**

THE UNIVERSITY OF TEXAS AT AUSTIN

LIBRARY

1968

LIBRARY

1968



TRI-CAPTAINS



Homer Ritter



Allen Hewins



George Eisiminger



Action on the field!



FRESHMAN TEAM



Back Row: Gary Laipple, Lambert Vertin, Byron Young, Neil Shalz, Wayne Wiedmer, Steve Schultz, John Crittendon, Paul Sutton, David Juhl, Coach Modellmog.  
 Front Row: Richard Bauman, Richard Hartman, David Newton, Gerald Goin, Carl Silvey, Mike Bell, Lee Miller, John Butcher, Greg Vertin.

THE UNIVERSITY OF TEXAS AT AUSTIN

LIBRARY

1968

LIBRARY

1968

# "A" TEAM



Back row: Coach Walter, J. Hartman, B. Nold, A. Hewins, M. Nold, H. Ritter, L. Sollars, D. Lester and Coach Modellmog.  
 Front row: L. Hart, G. Eisiminger, B. Thomas, D. Thomas and S. Boeh.

# BASKETBALL

# SCOREBOARD

WATHENA	OPPONENTS
70 Elwood	31
42 Effingham	70
86 Troy	41
49 Highland	64
53 Valley Falls	47
62 Midway	54
57 Highland	60
101 Elwood	51
51 Sts. Peter & Paul	53

WATHENA	OPPONENTS
57 Hiawatha	71
79 Horton	29
62 Robinson	50
82 Midway	70
60 Sts. P & P	62
103 Troy	58
56 Valley Falls	54
71 Robinson	42
49 Everest	77

# "B" TEAM



Back row: Coach Walter, B. Young, J. Butcher, J. Hartman, T. Hart, T. Miller, B. Rice, W. Wiedmer, R. Dishon, C. Silvey and Coach Modellmog.  
 Front row: D. Dishon, L. Vertin, G. Goin, L. Miller, D. Schultz, J. Walter and R. Bauman.

# FRESHMAN TEAM



Back row: Coach Walter, D. Newton, R. Bradshaw, K. Walker, J. Bohr, M. Thompson, R. Schuman, J. Orcutt and Coach Modellmog.  
 Front row: J. Grable, L. Bear, W. King, A. Bahr, D. Manville, R. Rotterman, B. Sheridan, D. Polley and M. Hewins.

THE UNIVERSITY OF TEXAS AT AUSTIN

LIBRARY

1968

LIBRARY

1968



Trainers and Statisticians: Jim Drake, Allan Boeh and Mike Wakeman.



L. Hart  
Guard



A. Hewins  
Forward



W. Nold  
Forward

## SENIORS



L. Sollars  
Guard



J. Hartman  
Guard



H. Ritter  
Forward



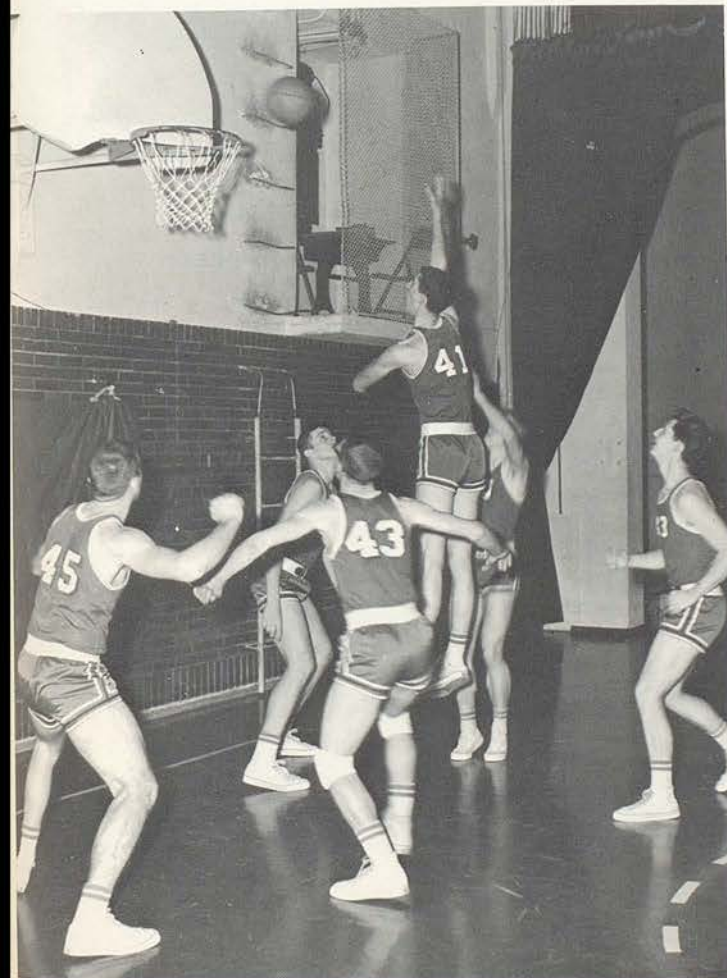
G. Eisiminger  
Forward



D. Lester  
Center



M. Nold  
Center



It takes good form and teamwork to make the basket.

Compliments of **HICKMAN BUILDING COMPANY AND JANICE'S BEAUTY SHOP**

THE UNIVERSITY OF TEXAS AT AUSTIN

LIBRARY

1968

LIBRARY

1968



# VARSITY TRACK

## TRACK EVENTS

- March 26 .... State Indoor Meet, Manhattan
- April 1 ..... Ottawa Relays
- April 19 ..... K-36 League
- April 26 ..... Highland Relays
- May 2 ..... Troy Invitational
- April 15 ..... Hiawatha Relays

Back row: Coach Walter, R. Bauman, D. Juhl, W. Wiedmer, B. Rice, A. Hewins, M. Nold, H. Ritter, D. Lester, R. Dishon, G. Laipple and Coach Modellmog.  
 Second row: L. Vertin, D. Dishon, C. Silvey, J. Crittendon, G. Miller, G. Goin, A. Boeh, J. Walter, S. Boeh, R. Schultz and M. Wakeman.  
 Front row: N. Shalz, D. Thomas, F. Rohrer, J. Hartman, J. Drake, B. Nold, G. Eisiminger, B. Kiehnhoff, T. Hart, B. Thomas, J. Hartman, J. Butcher and H. Shane.



# FRESHMAN TRACK

Back row: D. Newton, D. Manville, R. Bradshaw, A. Shane, K. Walker, J. Bohr, M. Thompson, R. Schuman, J. Orcutt and R. Rotterman.  
 Front row: J. Grable, V. Bear, W. King, A. Bahr, B. Sheridan, J. Silvy, D. Polley, R. Gabriel and M. Hewins.

## LETTERMEN'S CLUB



Back row: Coach Walter, B. Kiehnhoff, W. Wiedmer, B. Rice, A. Hewins, M. Nold, H. Ritter, Dennis Lester, L. Sollars and Coach Modellmog.  
 Second row: H. Shane, G. Miller, G. Goin, A. Boeh, D. Thomas, J. Walter, S. Boeh, R. Schultz and M. Wakeman.  
 Front row: F. Rohrer, J. Hartman, J. Drake, B. Nold, G. Eisiminger, L. Hart, T. Hart, B. Thomas and J. Hartman.

Compliments of GARD BUSINESS UNIVERSITY

THE UNIVERSITY OF TEXAS AT AUSTIN

LIBRARY

1968

LIBRARY

1968





PEP SQUAD

The Pep Club strives to encourage good sportsmanship and is "ready" to stick by the team to the end. Betty Walter is president and Karen Ann Ritter is faculty sponsor.



Decorating goal posts . . . an important duty of the pep club!



Pep Club President  
Betty Walter



Giving instructions



Lining up for routines at halftime

Compliments of HILLYARD CHEMICAL COMPANY

THE UNIVERSITY OF TEXAS AT AUSTIN

LIBRARY

1968

LIBRARY

1968

# CHEERLEADERS



"A" TEAM: Back row: Jo Ellen Hewins, Jan Shields-Head Cheerleader, Karen Harman. Front row: Melanie Euler.



Enthusiastic cheerleaders are very important in promoting school spirit. They work hard to perfect the jumps and motions used in cheers.

VICTORY!, VICTORY!  
That's our cry!  
VICTORY  
Are we it?  
Well, I guess  
Wathena High School!  
Yes, Yes, Yes!

"B" TEAM—  
Back row: Mary Pat Gabriel, Debbie Herring, Carol Goin.  
Front row: Judy Hewins, Head Cheerleader.

THE UNIVERSITY OF TEXAS AT AUSTIN

LIBRARY

1968

LIBRARY

1968



ROYALTY

**QUEEN BETTY**

Homecoming—October 22, 1965



Compliments of **ED'S STANDARD STATION**  
Edward Juhl-Bernard Koehler

THE UNIVERSITY OF TEXAS AT AUSTIN

LIBRARY

1968

LIBRARY

1968



Homecoming festivities were observed Friday night, October 22, at the Midway-Wathena football game. At the halftime the Pep Club and the Marching Band performed routines. Three convertibles in which the queen candidates rode circled the field. Then following moments of suspense, Captain Ritter placed the royal crown on Betty Walter, Queen elect. Lisa Walter and Jeff Relyea were flower girl and crown bearer.



After crowning the Queen, Captain Ritter presented her a bouquet of red roses.

# HOMECOMING



Karen Harman, escort George Eisiminger; Jan Shields, escort Allen Hewins; Betty Walter, escort Dennis Lester.

Compliments of **EVAN A. PETERSON, M.D. AND CAROLYN M. KLINE, M.D.**

THE UNIVERSITY OF TEXAS AT AUSTIN

LIBRARY

1968

LIBRARY

1968





Miss Betty Walter, Queen of the 1965 Homecoming, and her attendants, Jan Shields and Karen Harman, were feted at a Victory dance after the game, in the beautifully decorated auditorium. The theme was "tis Autumn". Music was furnished by Geha's Dance Band. For our school this was a night to remember!



**JAN SHIELDS, Queen Attendant**



**KAREN HARMAN, Queen Attendant**

Compliments of **MEIDINGER OIL COMPANY**  
Richard Meidinger, owner

THE UNIVERSITY OF TEXAS AT AUSTIN

LIBRARY

1968

LIBRARY

1968



## QUEEN OF BASKETBALL

Jan Shields was crowned Queen of Basketball Saturday night, February 5, 1966, by Captain Allen Hewins. Her attendants were Karen Harman and Judy Hewins; the escorts were Homer Ritter, George Eisiminger and Mark Nold. Brenda and Linda Bottiger were flower girls, and Jerry and Larry McVey were crown bearers. After the game in which Wathena defeated Valley Falls 56 to 54, the Pep Club entertained with a dance—the theme, Cupid's Enchantment.



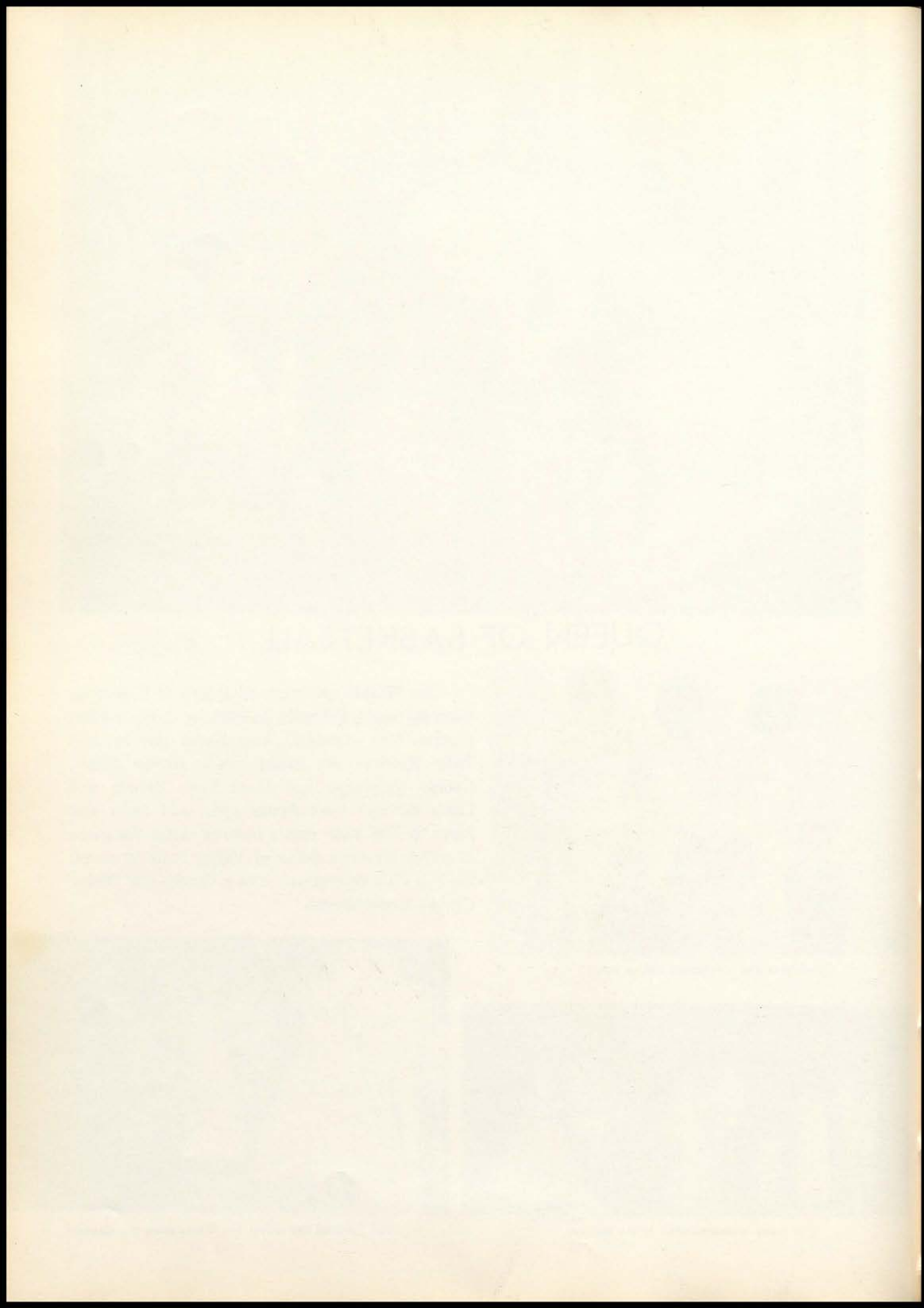
Candidates and attendants before entry



Jan receives the crown and a kiss from the Captain

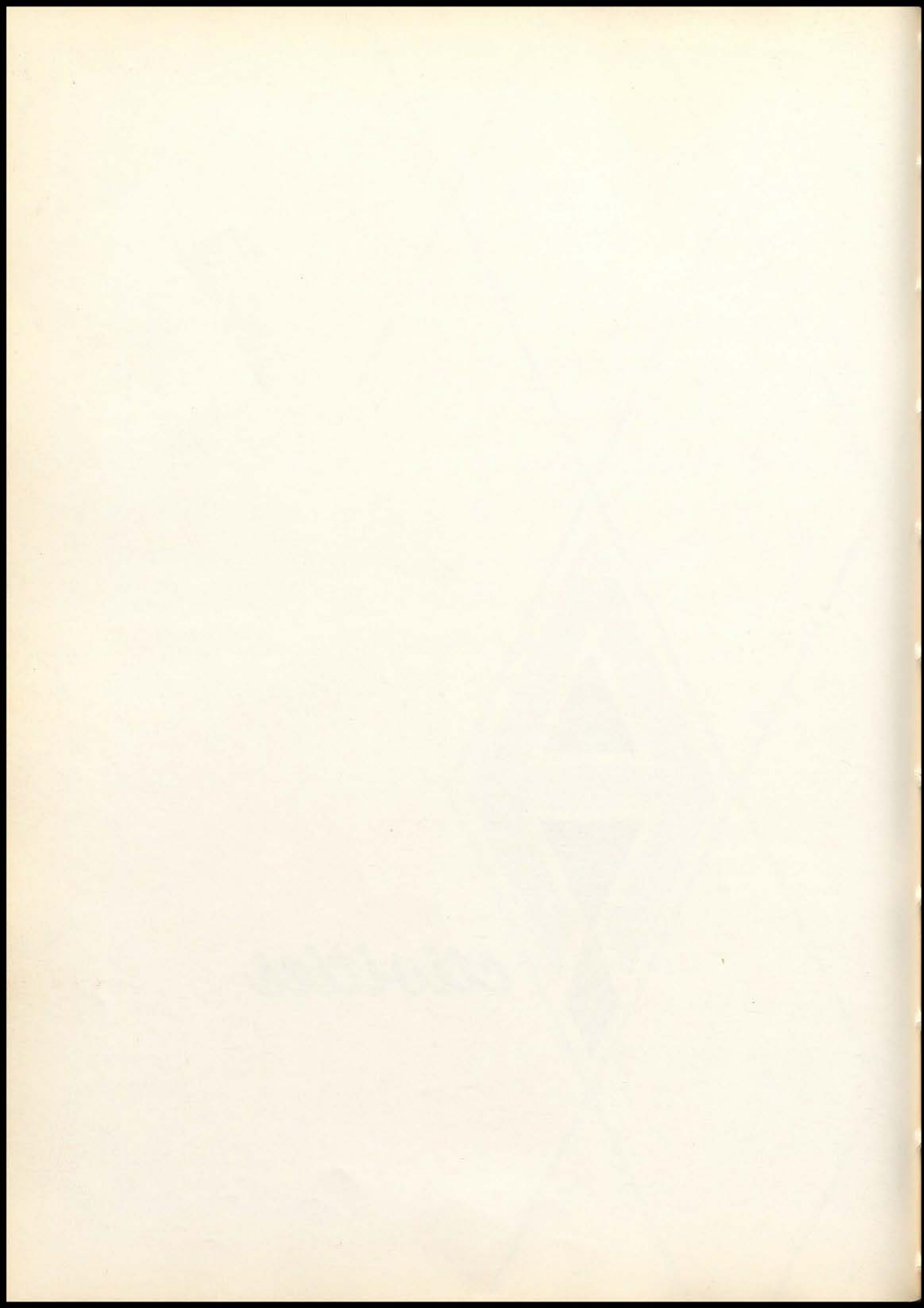


A tense moment—Who is the Queen?





*ctivities*

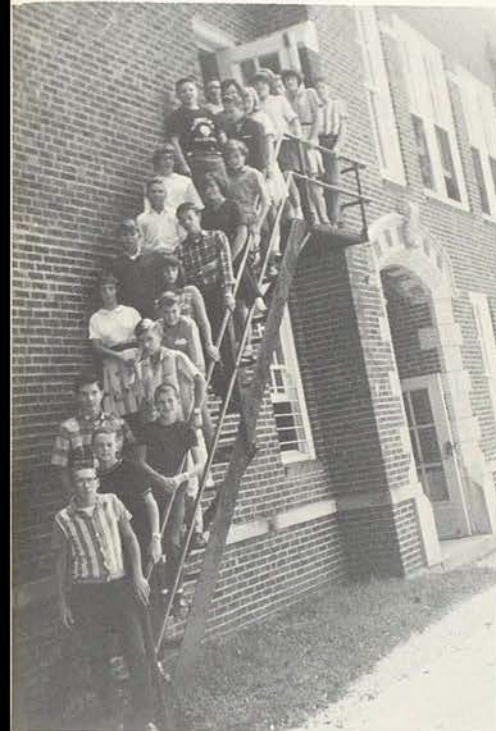




Jan Shields, Senior, welcomed the freshmen at the opening assembly, August 30, 1965.



The Fall Festival highlighted the first week of school.



Freshmen coming down the west fire escape in the first fire drill of the term, September 3.

**ANOTHER  
SCHOOL  
YEAR  
BEGINS!  
Fall  
1965**



Another Driver Education class learn proper techniques.



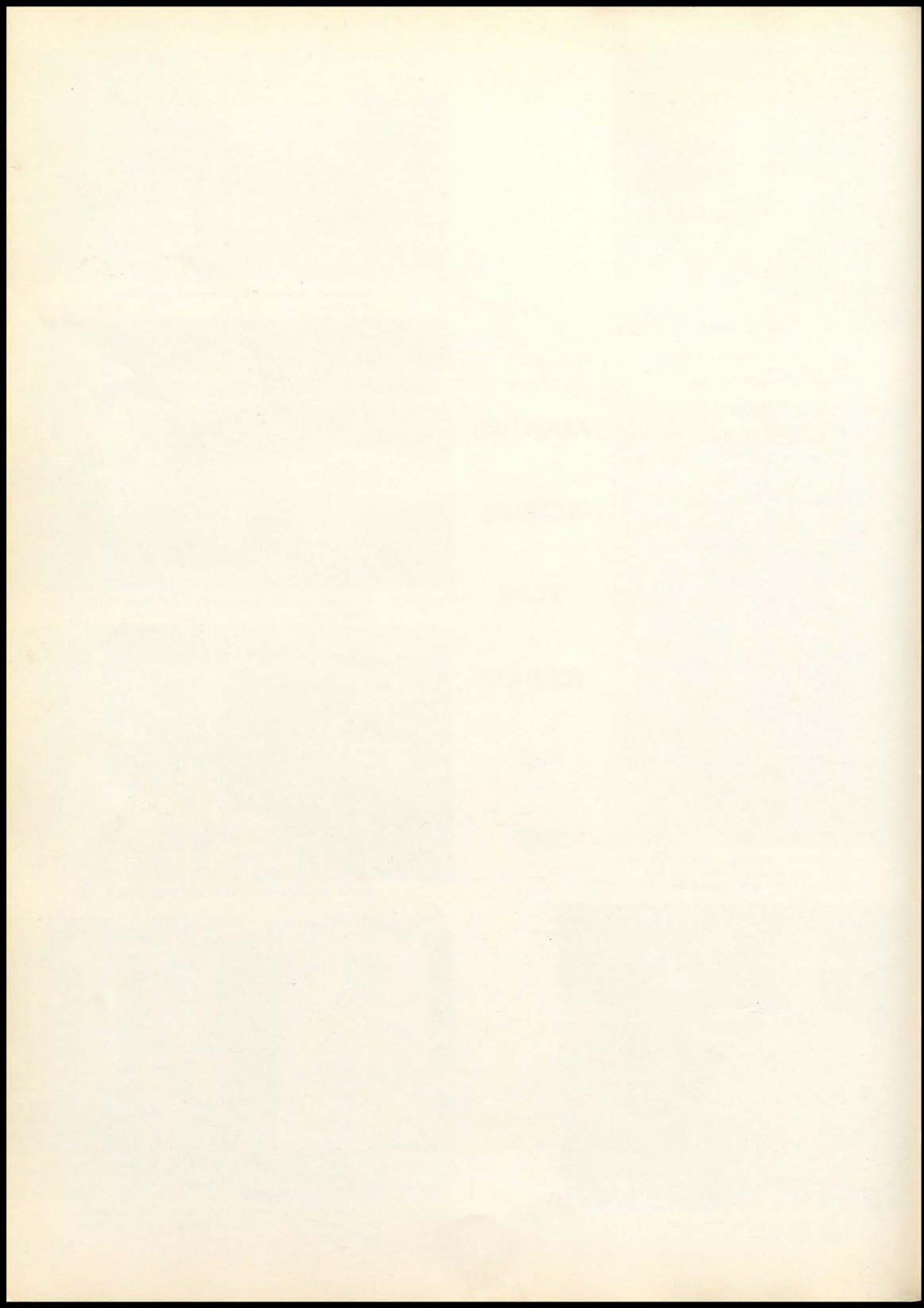
Again students bend over books studying assignments.



We hurry down the stairs to the next class.



At the Mobile x-ray unit from the Kansas Department of Health, students were checked September 7.





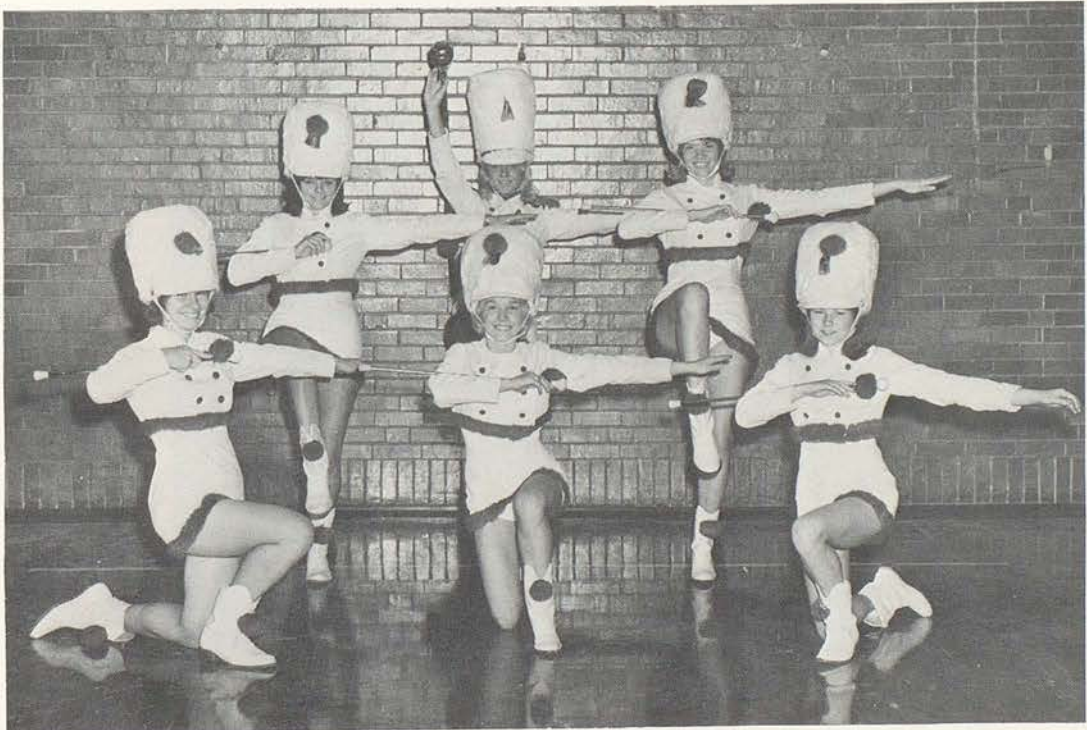


# BAND

Back row: Neil Shalz, Dennis Lester, Donnie Manville, Ronnie Gabriel, Kenneth Christopher, Regina Staudenmaier, Andy Shane, Lynn Nold and Carl Silvy.  
 Second row: Julie Grable, Marilyn Boeh, Linda Minsch, Mabel Wheeler, Donna Benitz, Deborah Juhl, Mary Ann Delzeit, Lonnie Sollars, Duane Thomas, Lambert Vertin, Connie Gladden, Jim Orcutt and John Grable.  
 Front row: Judy Hewins, Jan Shields, Debbie Herring, Ruth Crane, Linda Culp, Melanie Euler, Blaine Thomas, Carol Goin, Ellen Schultz, Thresa Kiefer and Karen Harman.



# MAJORETTES



**MAJORETTES:** These lively steppers lead the band. Back row: Ruth McVey; Sherye Bittiker, Drum Majorette; Betty Minsch. Front row: Lila Schuman, Carolyn Newton and Pat Studer.

THE UNIVERSITY OF TEXAS AT AUSTIN

LIBRARY

1968

LIBRARY

1968



GIRLS'  
CHORUS

Back row: Pam Thompson, Melanie Euler, Judy Hewins, Kathy Studer, Jan Shields, Lynn Nold, Karen Harman, Betty Minsch, Linda Benitz, Lila Schuman, Carol Goin and Linda Culp.

Third row: Sherye Bittiker, Deborah Juhl, Mary Pat Gabriel, Debbie Shuster, Debbie Pettit, Mabel Wheeler, Marilyn Boeh, Regina Staudenmaier, Linda Hartman, Nancy Coursen, Sharon Crittendon, Barbara Riggs.

Second row: Karen Silvy, Jo Lynn Staudenmaier, Brenda Handley, Barbara Bottiger, Ellen Schultz, Ruth McVey, Jo Ellen Hewins, Linda Minsch, Connie Gladden, Joan Butcher, Alveda White.

First row: Anita Chase, Julie Grable, Ramona Gabriel, Debbie Herring, Kassie Hewins, Joyce Wilson, Kathleen Paden, Kathleen Moskau, Joyce Walter, Gayla Crittendon, Carolyn Newton.



BOYS'  
CHORUS

Back row: Harry Shane, Larry Hart, Terry Hart, Jeffery Bohr, Lonnie Sollars, George Eisiminger, Alan Boeh.

Front row: Ronnie Rotterman, Bobby Bradshaw, Andy Shane, Dennis Coursen, Norman Evans, Steve Shellenberger, Marty Hewins and Miss Karen Ann Ritter, Director.

THE UNIVERSITY OF TEXAS AT AUSTIN

LIBRARY

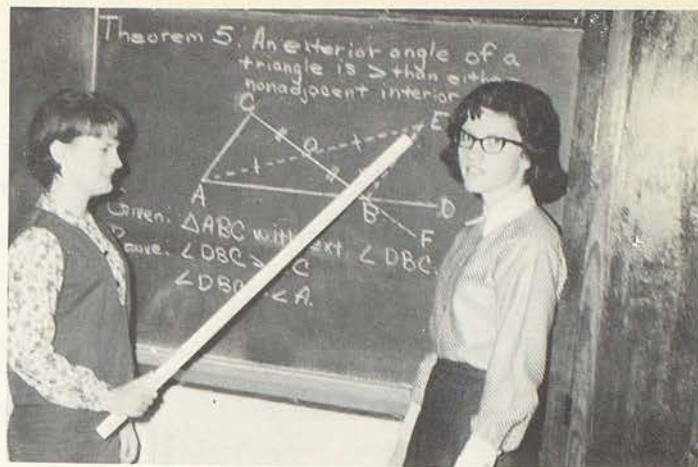
1968

1968

1968



Pat Studer diagrams a sentence for an English assignment



This is how it is done. Ruth Crane explains Theorem 5 to Marilyn Boeh in geometry.

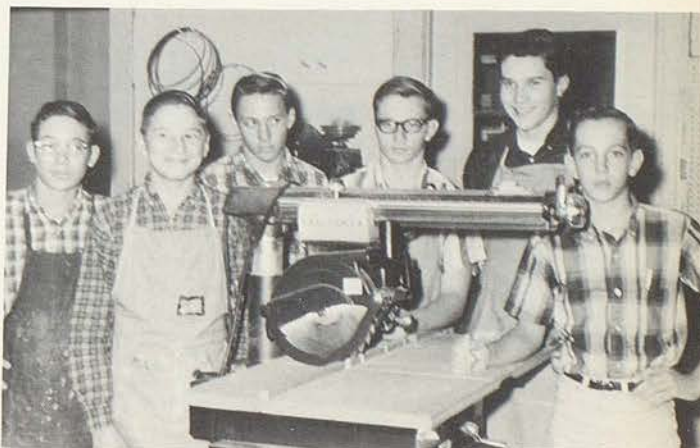
## SCHOOL ACTIVITIES



Freshmen girls sew their new skirts



Oh, look what I have found: Sandy Ramseier views a slide under the microscope while Dawson Minsch examines a human skull.



Learning the use of woodworking machines in shop classes



Concessions—and two new machines for the new season.



Band on parade!

Compliments of **COOK'S CAMERA SHOP**

THE UNIVERSITY OF TEXAS AT AUSTIN

LIBRARY

1968

LIBRARY

1968



Lyceum: Joseph Ellis, adventurer, brought a fascinating exhibit from Java, October 4.



Ted Marrens photographed class pictures, September 30; individual seniors, October 4 and 5.



Sophomore Twerp Dance, November 19.

Compliments of **JOSTEN'S INC., OWATONNA, MINN.**

**SPECIAL  
EVENTS**

**ON**

**OUR**

**CALENDAR**



Safety Program given by the Kansas Highway Department Trooper, Oct. 18.



Drive for the new electric football scoreboard funds began October 22.



Mr. Mead handed Mr. Hart the keys to the new driver education car, October 5.



Americanism Program given by The American Legion, October 28.

THE UNIVERSITY OF TEXAS AT AUSTIN

LIBRARY

1968

LIBRARY

1968



SENIOR PLAY

"FINDERS CREEPERS"

October 15, 8:00 P.M.

C A S T

Wilbur Maxwell.....Larry Hart  
 Hercules Nelson-Mike Wakeman  
 Celeste ..... Jan Shields  
 Nina Quigley ..... Ruth McVey  
 Frankie ..... Betty Walter  
 Aunt Mary ..... Karen Harman  
 Uncle Bob ..... Dennis Lester  
 Granny ..... Melinda Madinger  
 Mr. Quigley ..... Homer Ritter  
 Dr. Brown ..... John Shalz  
 Madeline ..... Judy Hewins  
 Harry Schuster .....  
 ..... George Eisiminger  
 Daphne ..... Linda Bear  
 Claude ..... Jim Drake  
 Mr. Nelson's Helper .....  
 ..... Norman Evans



Mortician Nelson and Mrs. Nelson are involved in the murder plot by Doctor Brown. Lawyer Schuster, and friend Madeline.



Daphne, wouldn't my shovel look kinda nice standing next to your broom?



Admired by their girl friends, Celeste and Nina, Hercules and Wilbur solve the crime with the aid of Frankie.



Two real hep-cats, Grandma and Mr. Quigley, stand behind mortician helper Henry.

THE UNIVERSITY OF TEXAS AT AUSTIN

LIBRARY

1968

LIBRARY

1968



THE UNIVERSITY OF TEXAS AT AUSTIN

LIBRARY

1968

LIBRARY

1968



## K-36 League One Act Play "SPECIAL GUEST"

February 3, 1966

Presented at the  
Midway Rural High School

Jan Shields	.....	Nora Andrews
George Eisiminger	.....	John Andrews
Larry Hart	.....	Edward Andrews
Duane Thomas	.....	Robert Norton
Melanie Euler	.....	Elaine Madison
Mrs. Kneller	.....	Director



Bless this food and all those gathered here



A plate for me, a plate for John,  
... a plate for him



The picture! You do want to see the picture



Stage hands: Glenda Abbett  
Brycen Rice  
Blaine Thomas

THE UNIVERSITY OF TEXAS AT AUSTIN

LIBRARY


1968

LIBRARY

1968

# JUNIOR SENIOR PROM

"The Loveliest Night of the Year" was the theme of the Banquet and Prom given by the class of 1966 to honor the class of 1965. Special guests included faculty and board members and families. After the banquet music for dancing was furnished by the "Cavaliers."

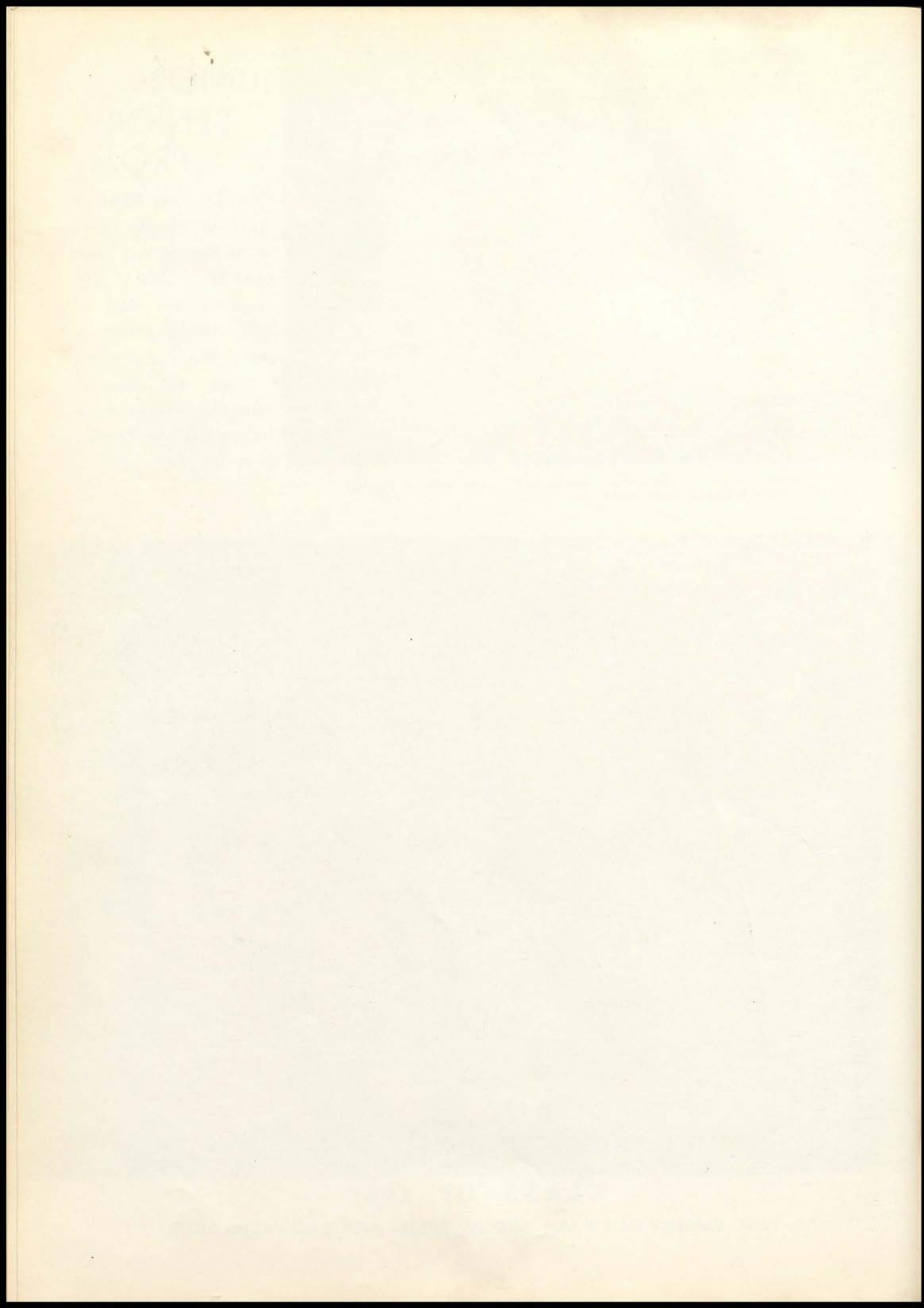


Members of the welcoming class look forward to this beautiful evening, the most important social event of the year.



## CLASS OF 1966

Compliments of EMBERY CAR WASH AND WATHENA APPLE GROWERS ASSN.







Miss Ritter, director, and the committee who provided the musical program during the banquet. Karen Harman, Jan Shields, Lonnie Sollars, Linda Burdge, Judy Hewins and Miss Ritter.



Speakers and special guests at the head table in the highly decorated room.



OUR GUESTS —  
CLASS OF 1965

Compliments of DEEKEN SUPER SERVICE AND "66" ONE-STOP

THE UNIVERSITY OF TEXAS AT AUSTIN

LIBRARY

1968

LIBRARY

1968

# COMMUNITY — SCHOOL ACTIVITIES

Our school participated in these events sponsored by community organizations.

## COUNTY GOVERNMENT DAY

Elected officials to the County Government Day, December 7, sponsored by the American Legion.



Susan Weber, Alan Boeh, Thresa Kiefer, Julie Grable, Duane Thomas, Jim Walter and Blaine Thomas.



Ronnie Bahr, Dick Schultz, Steve Boeh, Linda Hartman, Joyce Wilson, Dawson Minsch, Nelita Slaughter and Ruth Wollnick.



Career Conference panel from Highland Junior College: Dick Hewins, Ramona Silvy, Patty Laipple, Nick Embery, Fred Walter— presented a program for college-bound juniors and seniors.



Terry Hart and Dennis Lester, delegates to the Community Council.

## FALL FESTIVAL

September 3, 1965

Sponsored by  
The American Legion



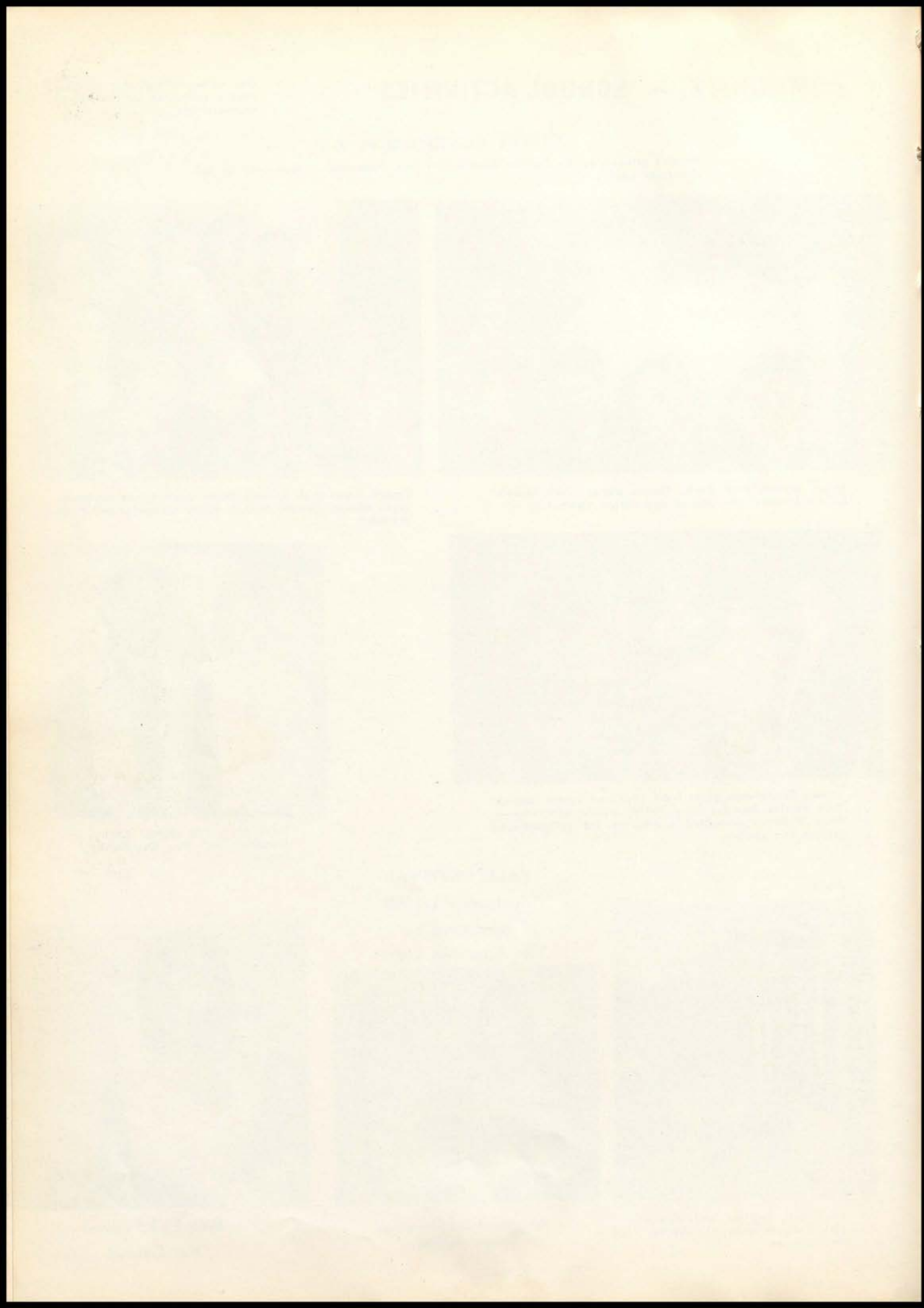
Miss Fall Festival and flower girl, Kelly Schuman, in the festival parade.



Pat Gabriel and runner-up  
Debbie Herring



Miss Fall Festival  
Pat Gabriel





Mrs. Kneller and Mr. Weiland serve at the teachers' Christmas breakfast, December 21.



"The Wonder of Christmas", choral cantata directed by Miss Ritter, presented December 23.

# 1965 CHRISTMAS ACTIVITIES



Serving at the Christmas Tea, Debbie Juhl, Linda Benitz, Carol Goin and Nancy Bauman.



Freshmen and Sophomore girls sing Christmas carols for mothers and guests, December 22. Karen Harman at the organ.



Geneva Wollnick and Fred Rohrer reign as Miss and Mr. Santa Claus.



Santa smiles at the last couple at the conclusion of the Seniors' Dance, December 18.



Program committee for the Christmas Assembly Dec. 24.

THE UNIVERSITY OF TEXAS AT AUSTIN

LIBRARY

1968

LIBRARY

1968



Kathy Silvy narrates for the fashion show in December.



Betty Walter arranges crib with help from Melinda Madinger and Roberta Miller.

# 1965 CHRISTMAS ACTIVITIES



Freshmen boys admire the Seniors' tree



Making cookies for Christmas



Stage setting for Christmas programs



Books are put away in lockers during vacation: December 24 to January 3, 1966.



Special from the oven for our Christmas lunch

THE UNIVERSITY OF TEXAS AT AUSTIN

LIBRARY

1968

LIBRARY

1968

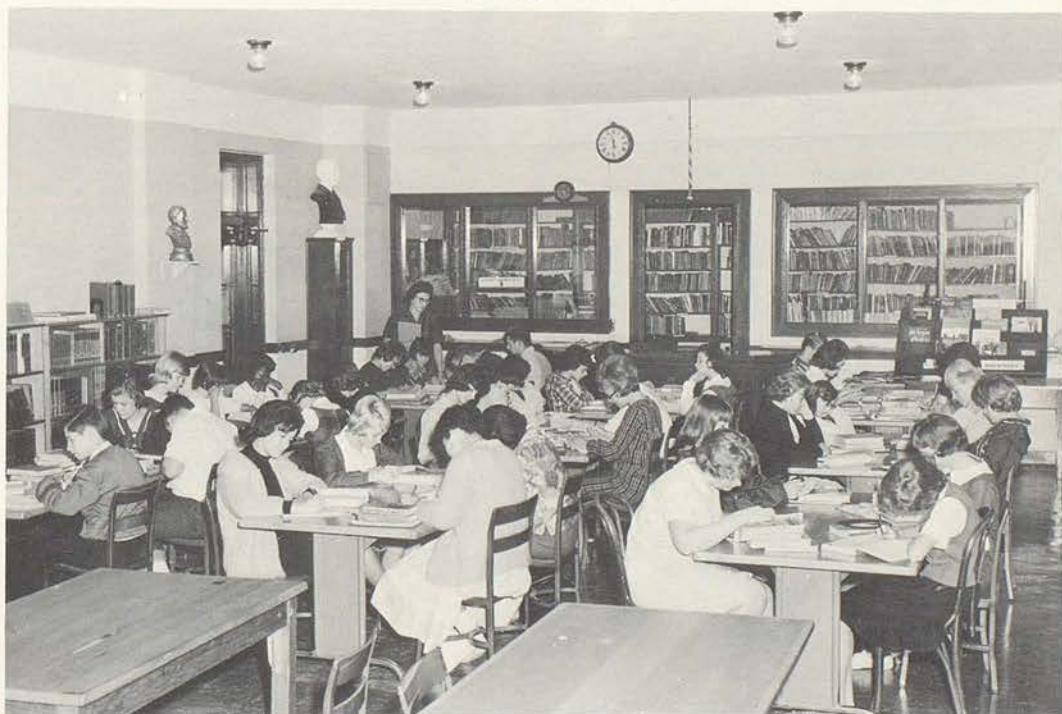




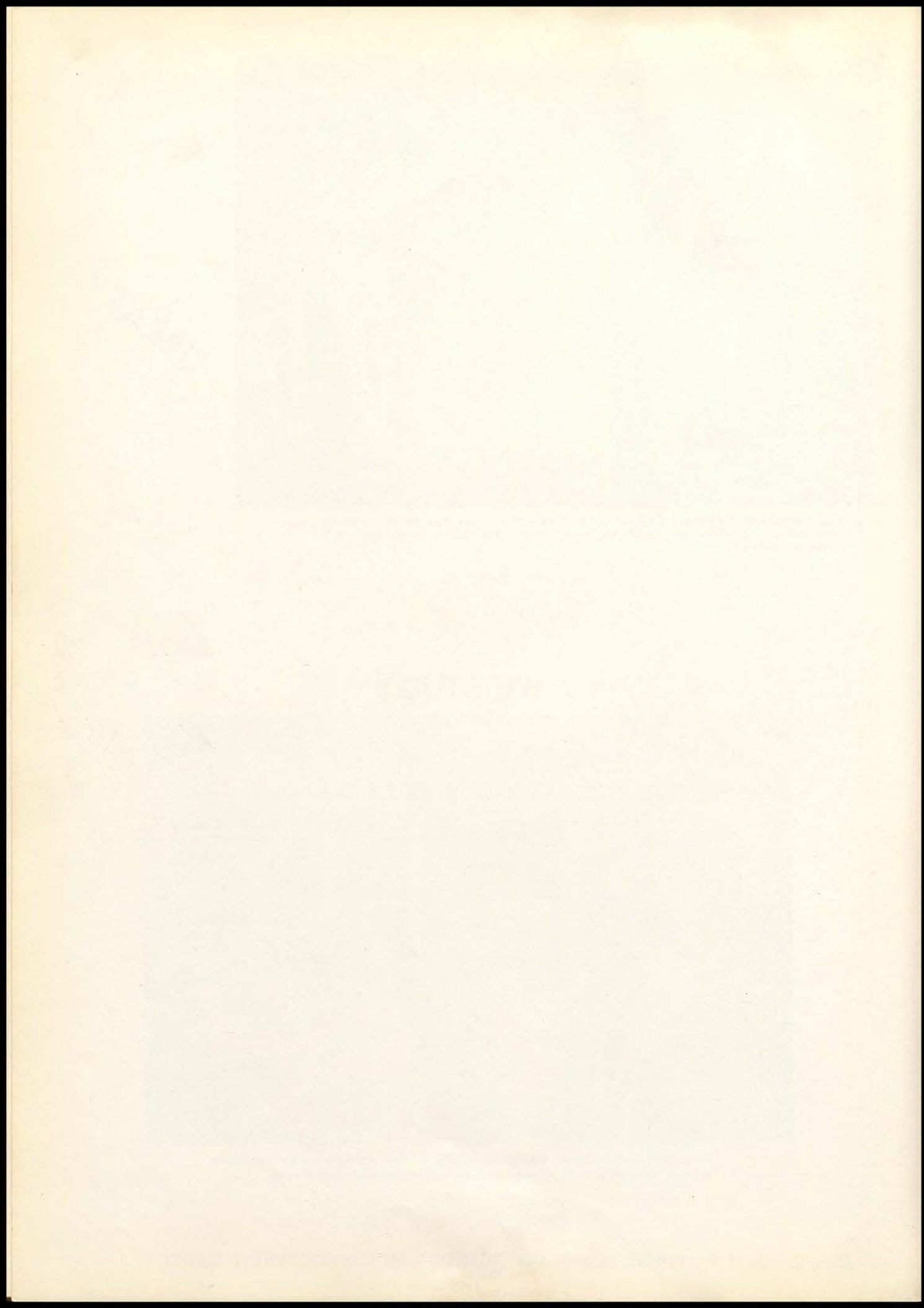
LIBRARY

Library—The staff gives time, effort and service to keep the library running smoothly and efficiently. Cards are typed, books are checked out, and worn copies repaired.

## WE STUDY



Study Hall: Are we busy? You better believe it. Here students work diligently to prepare homework or to develop projects and reports for their classes.

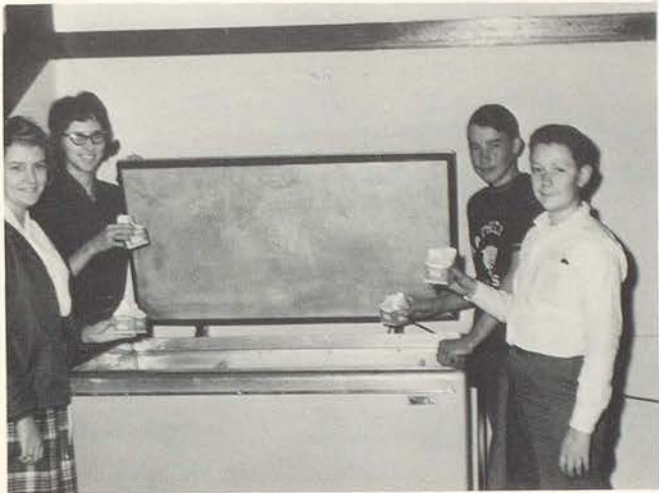




## LUNCH ROOM

Head-cook, Mary Engeman and assistant Maude Eisiminger, prepare mouth-watering peach cobbler in the ten-burner, double oven, New South Bend institutional range purchased in August, 1965, for the new term.

Wonderful results!  
We all agree!



Also available for afternoon refreshment: Chocolate milk or an orange drink.



These boys appreciate the fine Doniphan County Delicious apples which were purchased from a local grower and were served on the students' trays.



### Lunch Room Personnel:

- Janice Ward
- Lynda Fulcher
- Cathy Studer
- Jim Miller
- Mike Gabriel
- Robert Studer
- Mark Nold
- John Crittendon

THE UNIVERSITY OF TEXAS AT AUSTIN

LIBRARY

1968

LIBRARY

1968



# BUS DRIVERS

Bus Drivers: Paul Juhl, Jerry McCloud and Lawrence Pankau begin their routes north, south, east and west each morning.



Kenny Christopher, Mr. Goatcher's helper, uses the new power mower to get the football field in top notch shape.



Each morning at nine o'clock, these children load up in front of the high school to travel to Blair to attend kindergarten.

# CUSTODIAN



Why does our school look so neat? Mr. Vatchel Goatcher, custodian, can give you the answer.

THE UNIVERSITY OF TEXAS AT AUSTIN

LIBRARY

1968

LIBRARY

1968



Co-editors, Kathy Silvy and Betty Walter, responsible for organization and planning.



Business managers, Homer Ritter and Allen Hewins, try to balance finances.

## YEARBOOK STAFF

Preparation begins early for the Wildcat. All seniors are engaged in one way or another in its production. Tentative plans are made; layouts for the pages begin to take shape. Then picture taking, copy writing, pasting, selling, ordering—a lot of work but worth it when the final mats are completed.

In this book we have attempted to record the story of one of the happiest years of our lives. As you delve through the pages, may your enjoyment equal ours.

The class expresses deep appreciation for the many contributions that have made the publication possible.

—The Wildcat Staff  
Josephine Kiefer, yearbook sponsor



This group spent much time in pasting layout mats.



Checking for errors and making the dummy book.



George Eisiminger sells a Wildcat order.



Rose Hart types copy while Jan Shields and Phyllis Schmille measure for size.

THE UNIVERSITY OF TEXAS AT AUSTIN

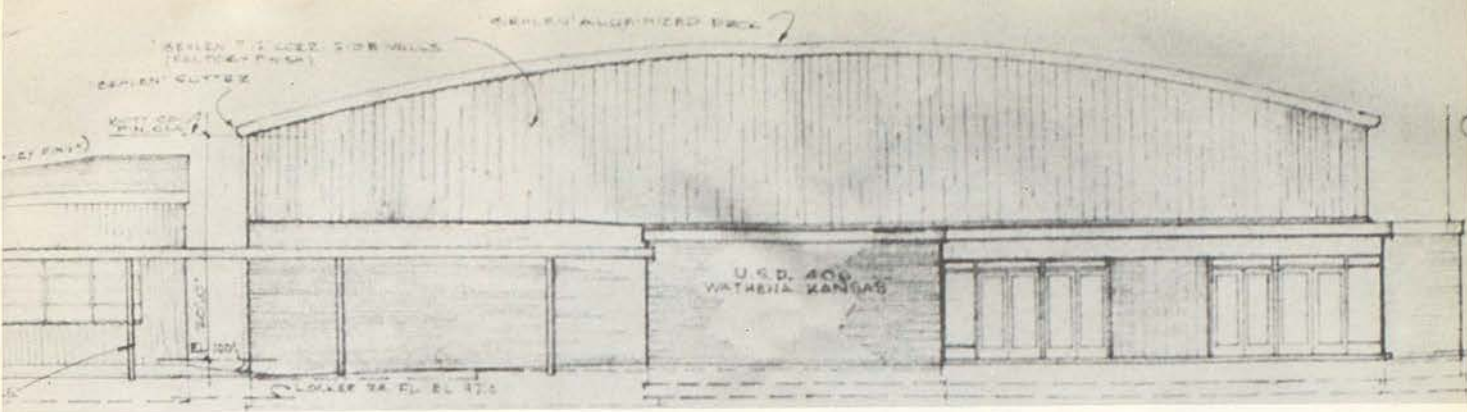
LIBRARY

1968

LIBRARY

1968





Front of the new gymnasium, parallel with the existing building  
Photograph of the architect's drawing.

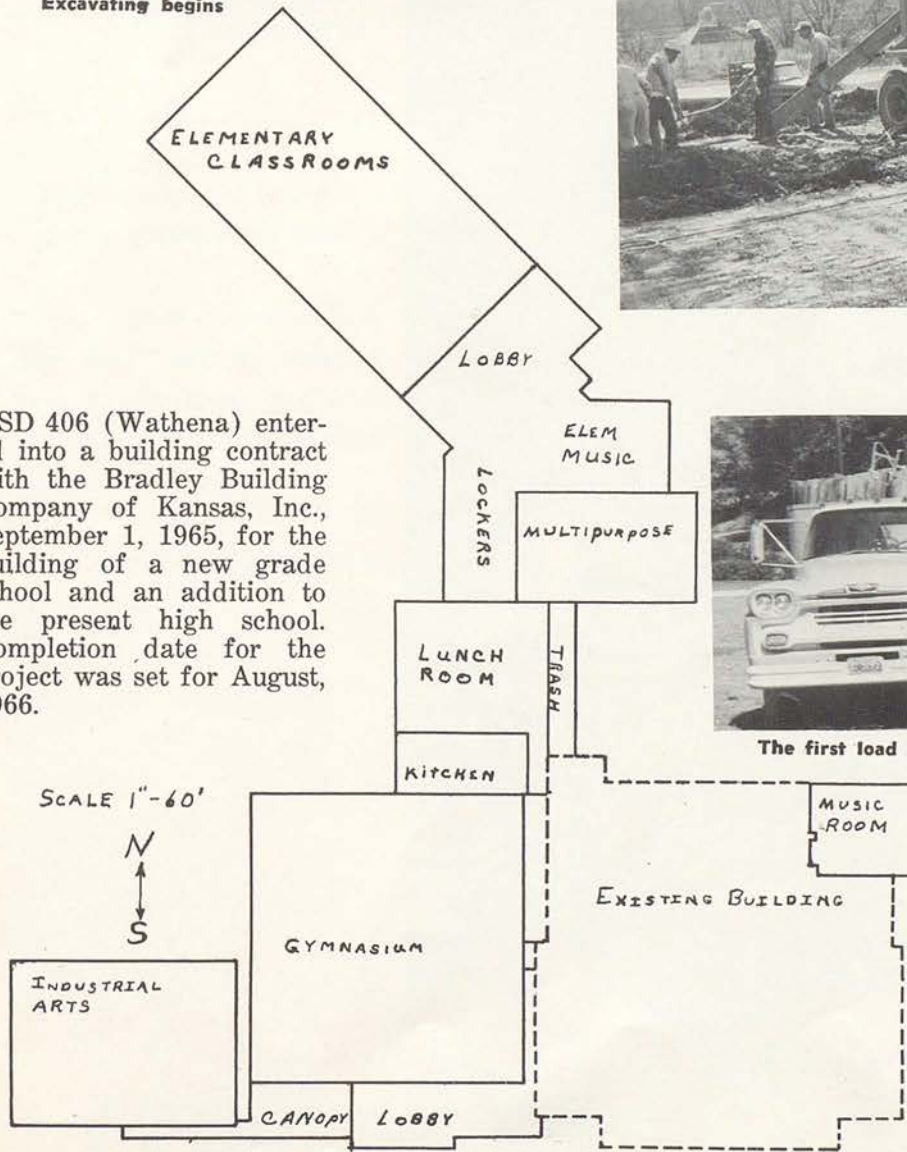


Excavating begins

## THE NEW BUILDING



USD 406 (Wathena) entered into a building contract with the Bradley Building Company of Kansas, Inc., September 1, 1965, for the building of a new grade school and an addition to the present high school. Completion date for the project was set for August, 1966.



Top elevation: Present and new addition drawing by Jim Miller



The first load arrives for the new construction

THE UNIVERSITY OF TEXAS AT AUSTIN

LIBRARY

1968

LIBRARY

1968



The Senior spends  
his last year . . .

with thoughts of the past,  
worries of the present, and  
bewilderment for the  
future.

As he walks through the  
halls he remembers . . .

the first day he saw them,  
the first day he was lost,  
the many problems he  
encountered.

For the future . . .

he wonders and hopes,  
and wonders some more.

It is hard to realize that  
four years ago he entered  
here for the first time, and  
in a short while he will leave  
for the last time . . .

To walk the paths which  
he dreamed of . . .

not

so

long

ago!

1966



THE UNIVERSITY OF TEXAS AT AUSTIN

LIBRARY

1968

LIBRARY

1968

