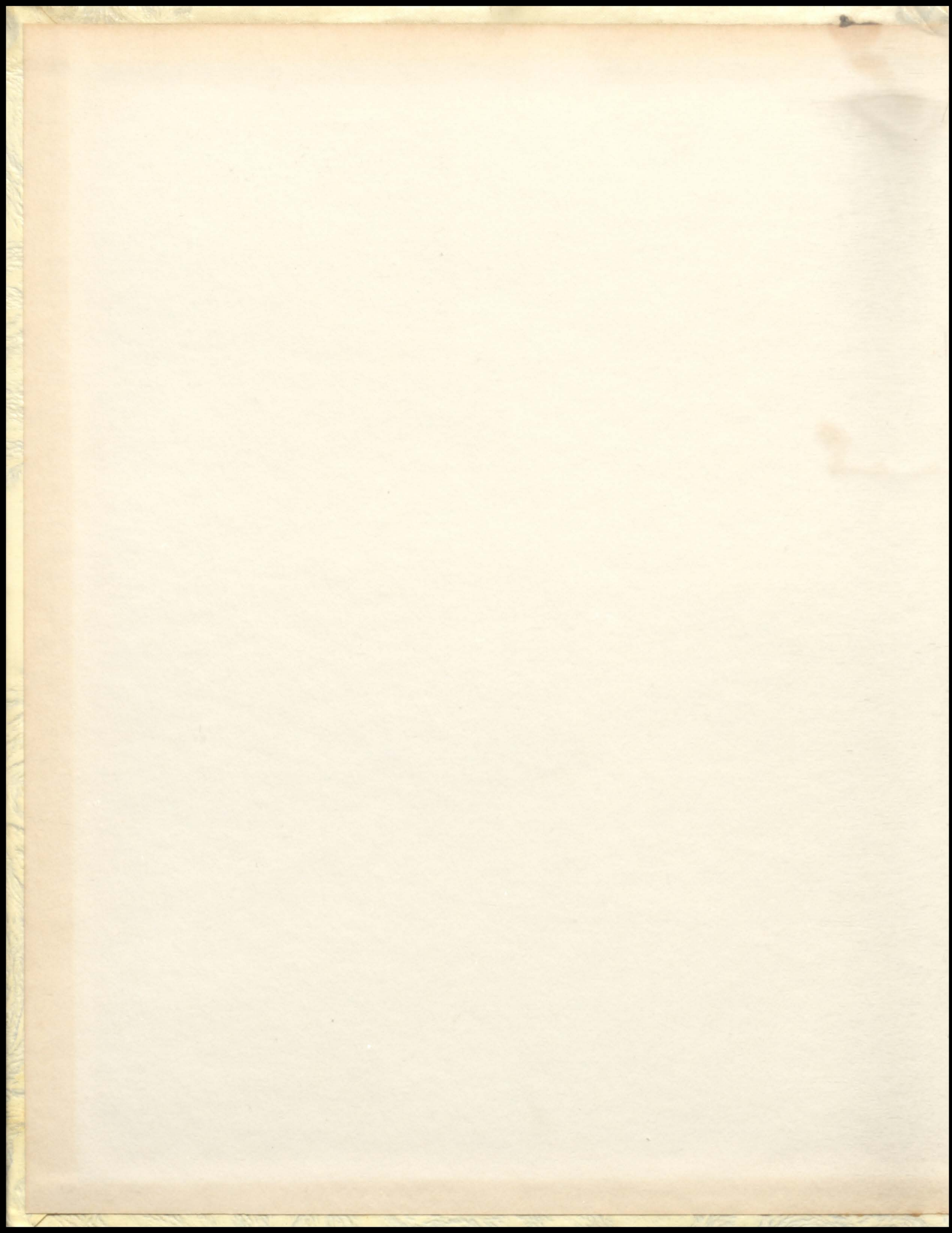
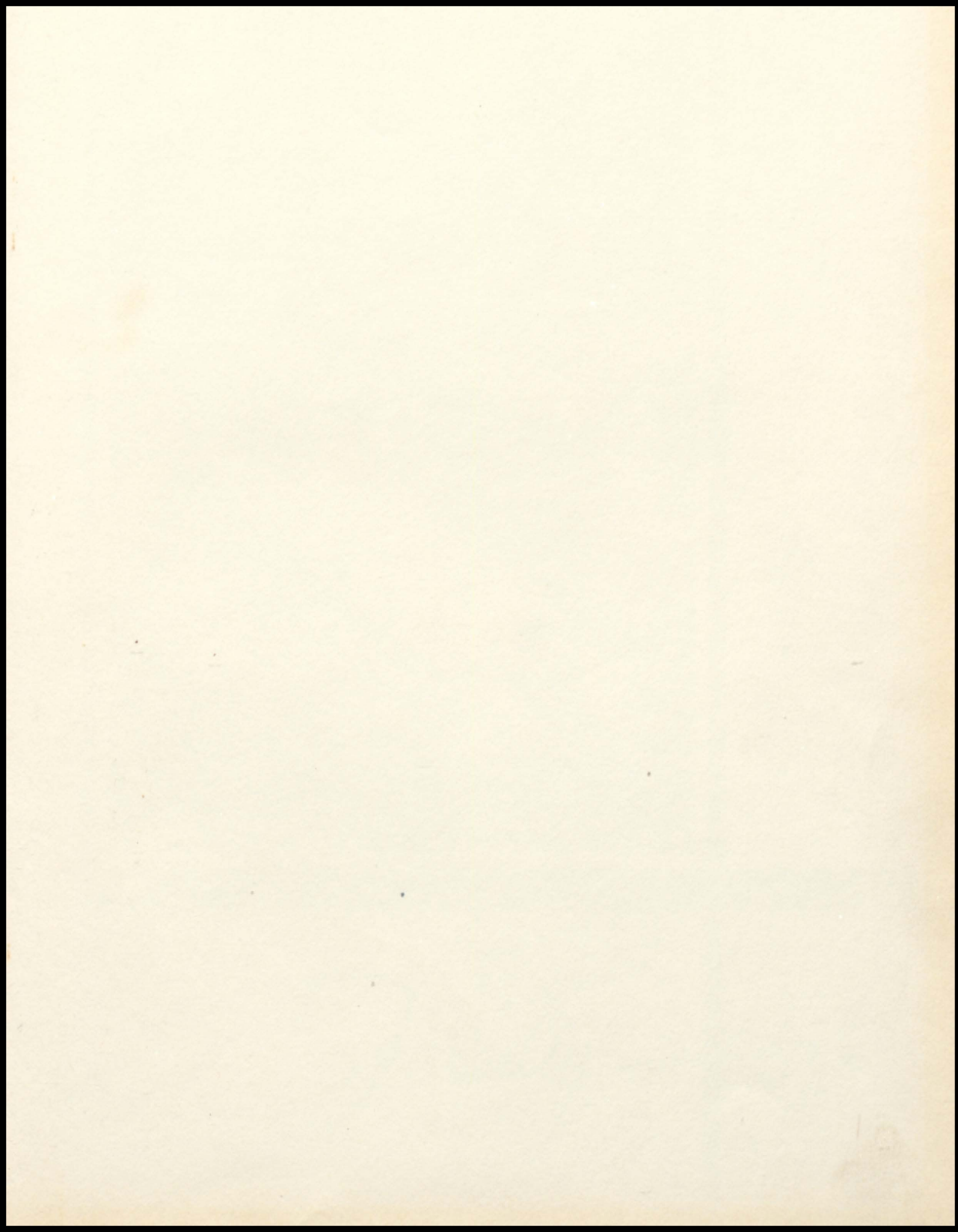




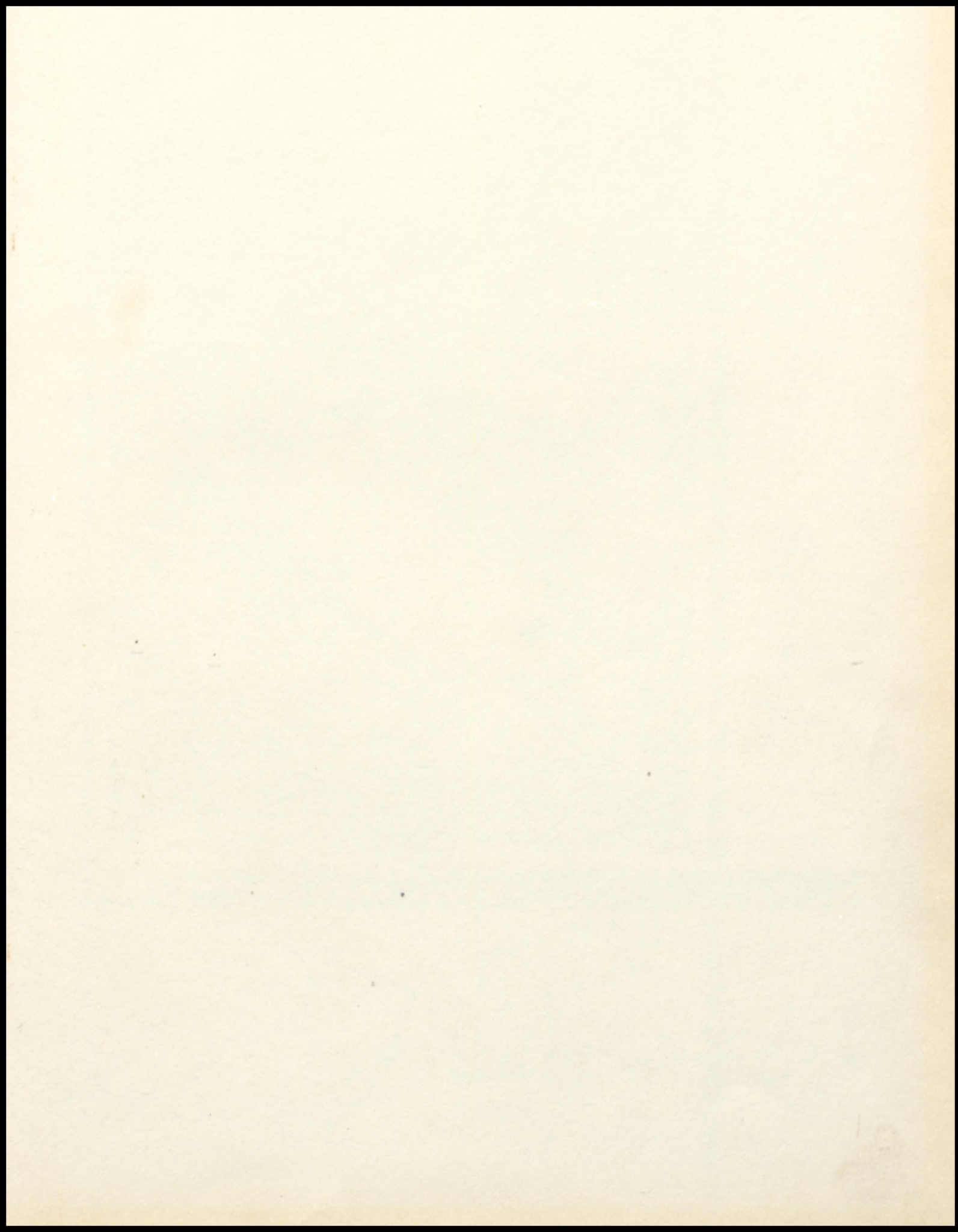
**THE TROJAN**

1959













*Faculty* | *59*





## The Principal's Message

Our country is passing through one of the most critical times of its history. We are looked upon as a very important world power. We hold a position of responsibility in doing our utmost to maintain peace among the countries of the world.

Another very important job of the people of this country is that of educating their children. Are we giving our youth the highest quality of education necessary to meet the complex problems they surely will encounter in their lifetime? Will our young people be prepared for the atomic future? Many more questions might be asked in regard to the adequacy of our schools and our methods of education.

The people of each community will determine the answers by the way they support their schools and by just how much they believe the schools are an important factor in the future lives of their children.

*M. M. Linder*





**RILLA VOLKER**  
B. A. from Nebraska University. American History, Constitution, World History, Psychology, Economics and Sociology, Pep Club Sponsor.

**STANLEY LARSON**  
B. S. from Kansas State. Vocational Agriculture I, II, III, and IV, Sponsor of F.F.A. and Freshman Class.

**MARGARET OLIVER**  
B. A. from Western Maryland College in Westminster, Maryland. English I and II, Librarian, Sponsor of Sophomore Class and Library Club.

**H. DONALD CLARK**  
B. S. from Pittsburg. Industrial Arts, Driver Training, Health, Physical Education, Head Coach, Freshman Class and T-Club Sponsor.



**LEROY E. TALBOT**  
B. S. from Kansas State. Typing, Shorthand, Secretarial Training, Bookkeeping, Guidance and Counseling, Sponsor of Senior Class, Trojan Trumpet, and Senior Annual.

**ELLEN WARREN**  
B. S. from Kansas State. English III and IV, Spanish, Sponsor of Senior Class, Spanish Club, Trojan Trumpet, Senior Annual, and Plays.

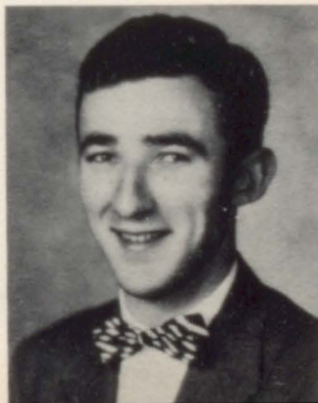


**FLORENCE N. RHODY**  
A. B. from Kansas University. Algebra I and II, Plane and Solid Geometry, Trigonometry, Sponsor of National Honor Society and Junior Class.

**FREDERICK K. GAMPPER III**  
B. S. from St. Benedict, M. A. from Kansas City University. Biology, Physics, Chemistry, Sponsor of Science Club, Assistant Coach.

**ANNA MARIE GOSS**  
B. S. from Kansas State. Home Economics I, II, and III, Physical Education, Supervisor Hot Lunch and Concession Stand, Junior Class Sponsor.

**JAMES B. WILSON**  
B. S. from Maryville Teachers College. Band, Glee Club, and Mixed Chorus, Sponsor of Sophomore Class.







SCHOOL SECRETARY  
Mrs. Ginter

SCHOOL BOARD

BUS DRIVERS



Louie Thomas Alva Cluck



Raymond Gaul Raymond Twombly Ben Williamson  
Treasurer Director Clerk

COOKS



Gladys Wykert Della Wykert

KITCHEN HELP



Nancy Ruhnke Dixie Wykert  
Sue Gilmore Glenda Burkhart

CUSTODIANS



Bill Kanning Louie Thomas

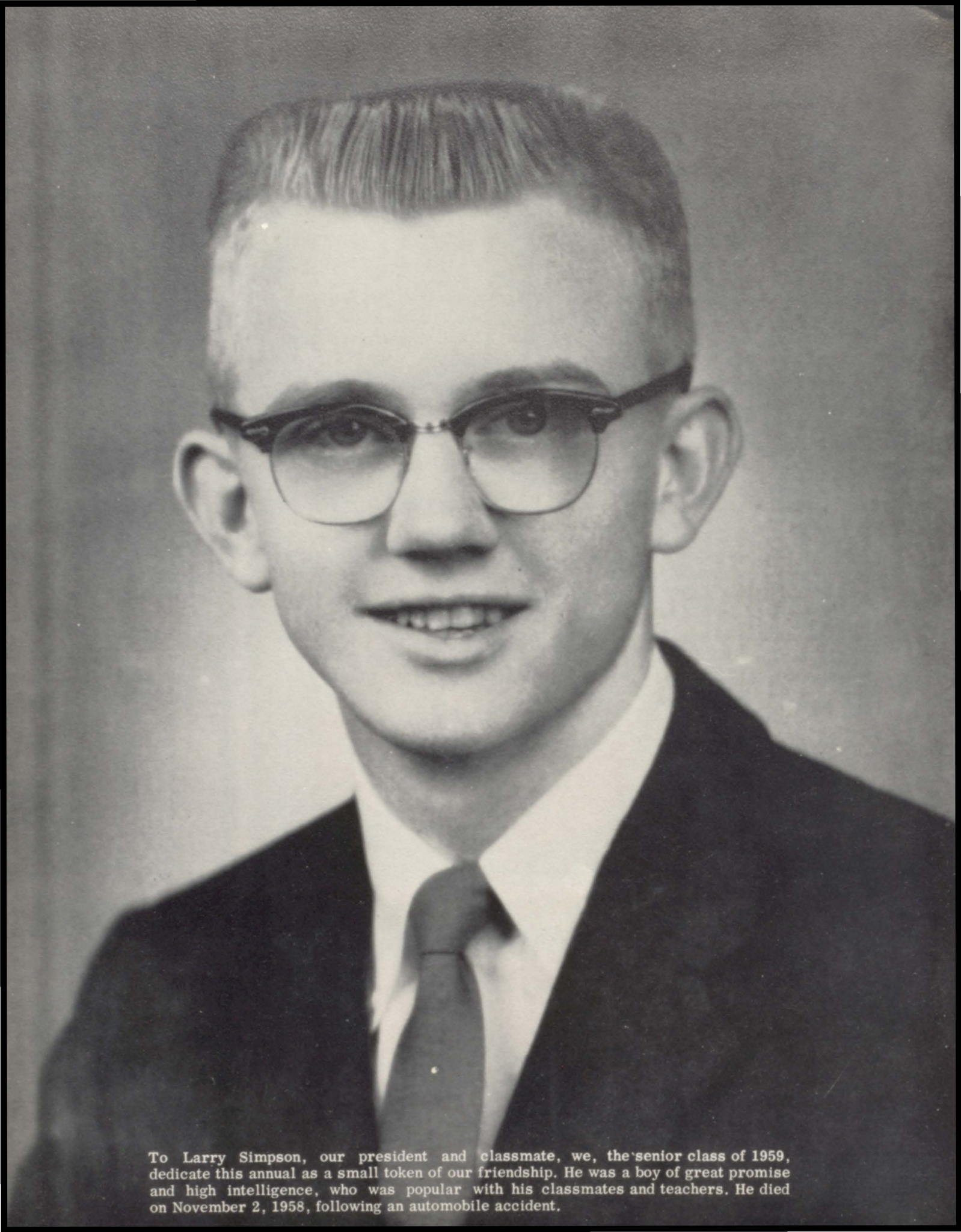




*Dedication*

*59*





To Larry Simpson, our president and classmate, we, the senior class of 1959, dedicate this annual as a small token of our friendship. He was a boy of great promise and high intelligence, who was popular with his classmates and teachers. He died on November 2, 1958, following an automobile accident.





*Graduates* 59





Paul Raymond Lehman

Football . . . . . 1,2,3,4  
 Football Co-Captain . . . 4  
 T-Club . . . . . 1,2,3,4  
 T-Club President . . . . . 4  
 Track . . . . . 3,4  
 Basketball . . . . . 2,3,4  
 Basketball Co-Captain . . . 4  
 F.F.A. Secretary . . . . . 2,3  
 Student Council President . . 4  
 Class President . . . . . 3  
 Class Treasurer . . . . . 4  
 Junior Play . . . . . 3  
 Junior-Senior Play . . . . . 4  
 Boys' State . . . . . 3  
 Ambition . . . Const. Engineer



Glenda Jean Burkhart

Band . . . . . 1,2,3,4  
 Glee Club . . . . . 1,2,4  
 Pep Club . . . . . 1,2,3,4  
 Student Council . . . 1,3  
 Freshman Class  
 President . . . . . 1  
 Junior Play . . . . . 3  
 One-Act Play . . . 2,3,4  
 Cheerleader  
 B-Team . . . . . 1,2  
 Spanish Club . . . . . 3,4  
 Science Club . . . . . 3,4  
 N.H.S. . . . . . 3,4  
 Library Club  
 Secretary . . . . . 3  
 Junior-Senior  
 Play . . . . . 4  
 Annual Staff . . . . . 4  
 Girls' State . . . . . 3  
 Ambition . . . College

Patricia Lou Smith

Glee Club . . . . . 1,2  
 Ambition . . . . . Receptionist



Thomas Larry Simpson

Senior Class  
 President . . . . . 4  
 Student Council  
 Sergeant-at-Arms . . 4  
 Spanish Club  
 President . . . . . 4  
 Spanish Club . . . . . 3,4  
 Science Club . . . . . 4  
 Band . . . . . 1  
 Annual Staff . . . . . 4  
 School Paper . . . . . 4  
 Pep Club . . . . . 4  
 (Deceased  
 November 2, 1958)

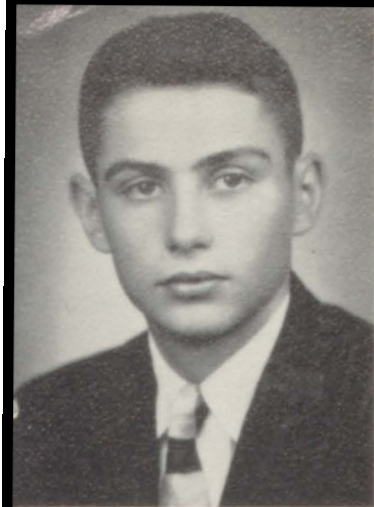


John Preston Weber

Basketball & Track . . . . . 2,3  
 Football Manager &  
 Band . . . . . 1,2,3,4  
 Freshman Student Council  
 Rep. . . . . 1  
 Sophomore Class President . . 2  
 Student Council &  
 T-Club . . . . . 1,2,3,4  
 Band Vice-President . . . . 3  
 Junior Play . . . . . 3  
 Treasurer of Science Club . . 3,4  
 Secretary of Science Club . . 4  
 Band President . . . . . 4  
 Glee Club . . . . . 1  
 Sergeant-at-Arms of T-Club . . 3  
 Free Throw Trophy . . . . . 3  
 Student Council  
 Vice-President . . . . . 3  
 Annual Staff & School Paper . . 4  
 Ambition . . . . . College







Larry Dewayne Sandy

- Basketball . . . . . 2,3
- Football . . . . . 2,3,4
- Tri. Captain Football . . . 3
- Co-Manager of Track . . . 2
- One-Act Play . . . . . 3,4
- F.F.A. . . . . 1,2,3,4
- F.F.A. Treasurer . . . . . 3
- F.F.A. President . . . . . 4
- Science & Library Club . . . 3
- Science Club
- Vice-President . . . . . 4
- N.H.S. . . . . 3,4
- Senior Class President . . . 4
- Sunflower Boys' State . . . . 3
- Sergeant-at-Arms of
- T-Club . . . . . 3
- Junior &
- Junior-Senior Play . . . . 3,4
- Annual Staff . . . . . 4
- Ambition . . . . . College



Betty Ann Abbett

- Pep Club . . . . . 1,2,3,4
- Band . . . . . 2,3,4
- Glee Club . . . . . 1,2,3,4
- Cheerleader . . . . . 3
- Junior Play . . . . . 3
- Junior-Senior
- Play . . . . . 4
- Student Council
- of Pep Club . . . . . 4
- Library Club . . . . . 4
- Ambition . . . Housewife



Donald Thomas Mullins

- F.F.A. . . . . 1,2,3,4
- Band . . . . . 1
- Junior-Senior Play . . . . . 4
- Ambition . . . . . Mechanic

Pauline Frances Studer

- Glee Club . . . . . 1
- Pep Club . . . . . 1,2,3,4
- President of
- Pep Club . . . . . 4
- F.F.A. Queen . . . . . 3
- Annual Staff . . . . . 4
- Ambition . . . Secretary



David James Lichliter

- Band . . . . . 1,2,4
- Football . . . . . 1,2
- Track . . . . . 1,2
- Mixed Chorus . . . . . 1
- Ambition . . . . . Mechanic







Nancy Lee Ruhke

Pep Club . . . . . 1,2,3,4  
 Band . . . . . 1,2,3,4  
 Glee Club . . . . . 1,2,3,4  
 Mixed Chorus . . . . . 4  
 Junior Play . . . . . 3  
 One-Act Play . . . . . 3  
 Junior-Senior Play . . . . . 4  
 Annual Staff . . . . . 4  
 School Paper . . . . . 4  
 Student Council Secretary . . 4  
 Student Council  
   Senior Class . . . . . 4  
 Science and Library Club . . 4  
 Ambition . . . I.B.M. Operator



Harold D. Stevens

F.F.A. . . . . 3,4  
 Ambition . . . Farmer

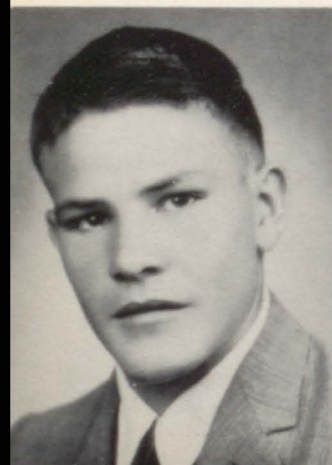


Ruth Ann Ruhke

Glee Club . . . . . 1  
 Library Club . . . . . 3  
 Ambition . . . . . Secretary

Henry Oren Keller

Football . . . . 1,2,3,4  
 T-Club . . . . . 4  
 F.F.A. Reporter . . 4  
 Pep Club . . . . . 3,4  
 Track . . . . . 3  
 F.F.A. . . . . 1,2,3,4  
 Ambition . . . Farmer



Katherine Louise Stahl

Glee Club . . . . . 1,4  
 Mixed Chorus . . . . . 1,4  
 Pep Club . . . . . 1,2,3,4  
 Spanish Club . . . . . 3,4  
 Annual Staff . . . . . 4  
 Ambition . . . Air Line Hostess





Stephen Charles Foster

Sophomore Class Reporter . . . 2  
 Science Club . . . . . 3,4  
 President Science Club . . . 4  
 Annual Staff . . . . . 4  
 School Paper . . . . . 4  
 Band . . . . . 1,2  
 Vice-President  
 of Senior Class . . . . . 4  
 Ambition . . . . . College



Ina Faye Whetstine

Pep Club . . . . . 1,3  
 Glee Club . . . . . 1,3,4  
 Junior Play . . . . . 3  
 Junior-Senior  
 Play . . . . . 4  
 Annual Staff . . . . . 4  
 Library Club . . . . . 4  
 Mixed Chorus . . . . . 4  
 Ambition . . . . . Beautician



Norma Del Ruhnke

Band . . . . . 1  
 Pep Club . . . . . 1,2,3,4  
 Pep Club Secretary . . . . . 4  
 Junior-Senior Play . . . . . 4  
 F.F.A. Queen Attendant . . . 4  
 Ambition . . . . . Secretary

Joy Carol Thornton

Pep Club . . . . . 1,2,3,4  
 Pep Club  
 Treasurer . . . . . 4  
 Glee Club . . . . . 1,3,4  
 Mixed Chorus . . . . . 4  
 Annual Staff . . . . . 4  
 Library Club . . . . . 4  
 Junior Play . . . . . 3  
 Ambition . . . . . Secretary



Allen Lee Brownlee

F.F.A. . . . . . 1,2,3,4  
 T-Club . . . . . 2,3,4  
 Basketball . . . . . 2,4  
 Track . . . . . 1,2,3  
 Science Club . . . . . 4  
 Band . . . . . 1,4  
 Pep Club . . . . . 4  
 Ambition . . . . . Electrical Engineer







Mary Sue Gilmore

Band-Glee Club . . . 1,2,3,4  
 Dance Band . . . . . 3,4  
 Student Council  
   Sophomore Class . . . . . 2  
 Pep Club . . . . . 1,2,3,4  
 N.H.S. . . . . . 3,4  
 F.F.A. Queen Attendent . . . 3  
 Assistant Editor Annual . . . 3  
 Annual Editor . . . . . 4  
 Junior and One-Act Play . . . 3  
 Science Club . . . . . 3,4  
 Junior-Senior Play . . . . . 4  
 Library Club President . . . 4  
 Student Council . . . . . 4  
 Senior Class Secretary . . . 4  
 Ambition . . . I.B.M. Operator



Floyd Deroy Mooney

Basketball  
 Manager . . . . . 2  
 Science Club . . . 3,4  
 Pep Club . . . . . 4  
 T-Club . . . . . 1,2,3,4  
 Mixed Chorus . . . . 1  
 Glee Club . . . . . 1  
 Ambition . . Air Force

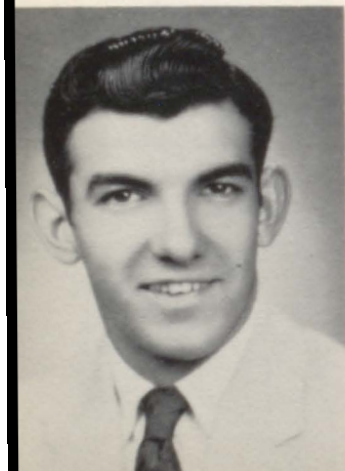


Mary Agnes Smith

Glee Club . . . . . 1,2  
 Ambition . . . . . Housewife

Richard Eugene Norris

F.F.A. . . . . 1,2,3,4  
 Student Council  
   Rep. F.F.A. . . . . 3  
 Student Council  
   Rep. T-Club . . . . 4  
 Track . . . . . 1,2,3  
 Football . . . . . 1,2,3  
 Freshman  
   Vice-President . . . 1  
 Pep Club . . . . . 3,4  
 Band . . . . . 1,2  
 Ambition . . College



Nona Pauline Thornton

Glee Club . . . . . 1,2  
 Pep Club . . . . . 1,2,3,4  
 Pep Club Vice-President . . 4  
 Library Club . . . . . 4  
 Annual Staff . . . . . 4  
 School Paper . . . . . 4  
 Ambition . . . . . Secretary







*Undergrads* 59





Mickey Rocky  
President



Gary Winder  
Vice-President



Ronnie Ruhnke  
Secretary-Treasurer



Kay Ainlay  
Student Council



Shirley King



Sandra Losson



Bernard Koehler



Sharon Thornton



Jerry Murphy



Sharon Davies



Harold Whitten



Ida Howland



Gerald Myers



Mary Winkel



Bill Foster



Margaret Sharp



Donald Wykert



Donna Thornton



Ray Prohaska



Irene Lehman



Jack Thornton



Geraldine Clary



John Marriott



Betty Clary



Opal Christian

J  
U  
N  
I  
O  
R  
S



S  
O  
P  
H  
O  
M  
O  
R  
E  
S



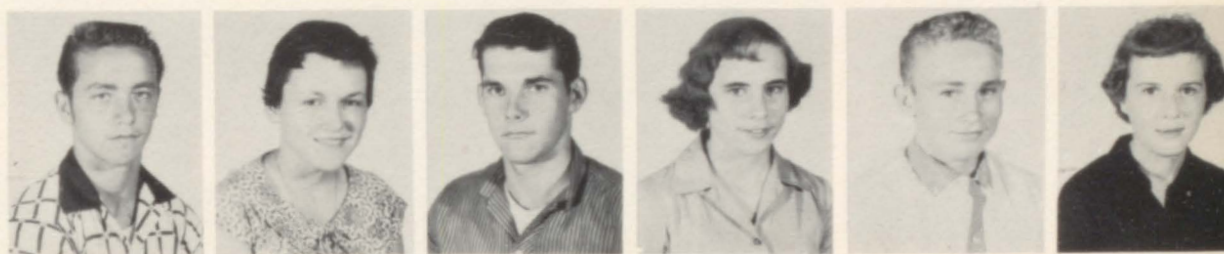
Kathy Studer President  
 August Gronniger Vice-President  
 Rodney Wiedmer Secretary-Treasurer  
 Mike Williamson Student Council  
 Chloe Young  
 Steve Mitchell



DeWayne Reder  
 Susie Lewis  
 Dale Robertson  
 Sharon Akle  
 Garry Sandy  
 Dixie Wykert



Linda Meier  
 Ray Thompson  
 Barbara Sharp  
 Dennis Smith  
 Linda Ruhnke  
 Gerald Kentzler



Larry Schoenfelder  
 Marilyn Fitzgerald  
 Roger Ruhnke  
 Doris Thornton  
 Larry Wykert  
 Jean Tracy



Connie Ruhnke  
 Richard Wright  
 Mary Geisendorf  
 Bill Chase  
 Patty Sharp  
 Bill Ashworth  
 Larry Smith  
 Rosalee Wright  
 Dale Bembrick







Harold Dillenback President    Larry Kanning Vice-President    Tommy Yates Secretary-Treasurer    Linda Firkins Student Council    John Quick    Joyce Sharp



Diana Chase    Richard Abbett    Jean DeGolyer    Bill Norris    Nancy Harter    Andrew Franken



Robert Clark    Janice Lewis    Warren Cluck    Sharon Brenner    Roger Freel    Sue Ainlay



Sharon Ramsey    James Etherton    Marilee Foster    Robert Seidl    Bonnie Ruhnke    John Howland



Joyce Gaul    Edda Kay Juhl    Robert Keller    Tommy Twombly    June Snodgrass    Lynda Miner



Robert Kuhnert    Karen Brenner    Jimmie Clark    Judy Edgerton    Mildred Whetstine

F  
R  
E  
S  
H  
M  
E  
N





*Activities* | 59



# Football Homecoming '59



ESCORT  
Mickey Rockey

QUEEN  
Shirley King

PRINCESS  
Kay Ainlay



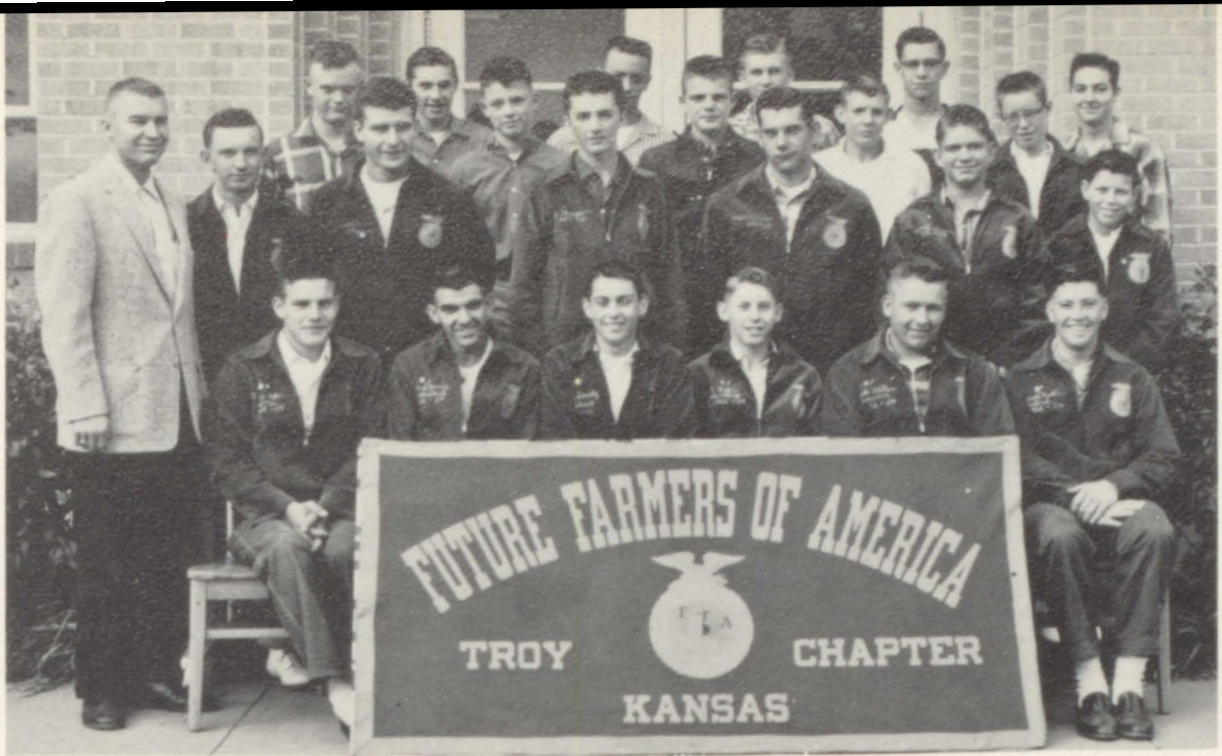
ESCORT  
Paul Lehman

PRINCESS  
Chloe Young



ESCORT  
Gary Winder





## The Future Farmers of America

FIRST ROW: Advisor, Mr. Larson; Reporter, Henry Keller; Vice-President, Richard Norris; President, Larry Sandy; Secretary, Billy Foster; Treasurer, Harold Whitten; Sentry, Donnie Mullins. SECOND ROW: DeWayne Reder, Gerald Myers, Ray Thompson, Roger Ruhnke,

Harold Stevens, Garry Sandy. THIRD ROW: Gerald Kentzler, Andrew Franken, Bobby Keller, Bill Norris, Jim Etherton. FOURTH ROW: Dale Robertson, Larry Shoenfelder, Larry Kanning, Allen Brownlee, Jerry Murdhu.

## F. F. A. Sweethearts

ATTENDANT  
Norma Del Ruhnke

SWEETHEART  
Shirley King

ATTENDANT  
Kay Ainlay







## Trumpet Staff

STANDING: John Weber, Stephen Foster, Nancy Ruhnke, (deceased) Larry Simpson; Paul Lehman, Co-Editor, Nona Thornton, Advisor, Mrs. Warren; Sue Gilmore, Glenda Burkhart, Advisor, Mr. Talbot; Betty Abbett. SEATED: Co-Editor,

## Trojan Staff



STANDING: Advisor, Mrs. Warren; Stephen Foster, Paul Lehman, John Weber, Nancy Ruhnke, Larry Simpson (deceased), Sonny Mooney, Nona Thornton, Advisor, Mr. Talbot. SEATED: Pauline Studer, Ina Whetstine, Joy

Thornton, Junior Representative, Bill Foster; Editor, Sue Gilmore, Glenda Burkhart, Katherine Stahl, Betty Abbett. NOT PICTURED: Larry Sandy.





## The Student Council

FIRST ROW: Principal, Mr. Ginter; Secretary, Nancy Ruhnke; Vice-President, John Weber; President, Paul Lehman; Sergeant-at-Arms, (deceased) Larry Simpson; Mr. Clark, Advisor. SECOND ROW: Mrs. Volker, Advisor;

Judy Edgerton, Linda Firkins, Larry Sandy, Richard Norris, Mickey Rockey, Pauline Studer. THIRD ROW: Kathy Studer, Kay Ainlay, Betty Abbett, Tommy Twombly, Harold Dillenback. Billy Foster, NOT PICTURED: Sue Gilmore.

## National Honor Society

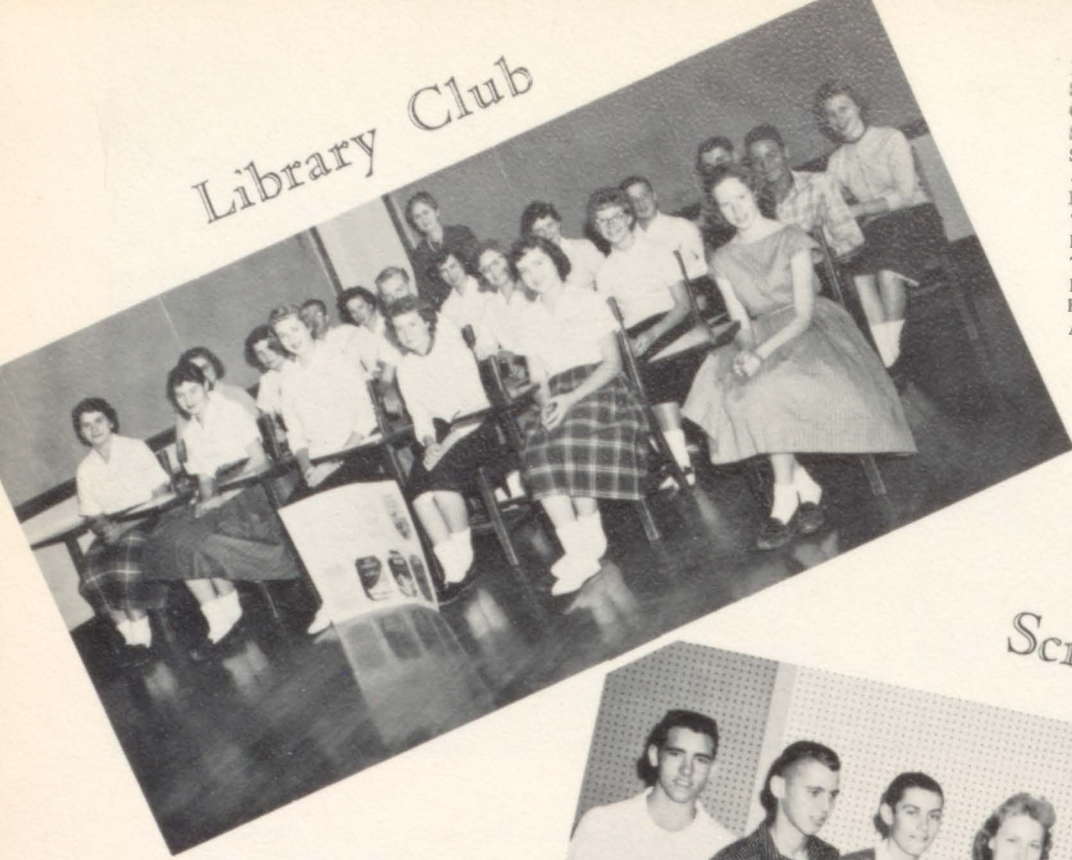


STANDING: President, Larry Sandy; Ronnie Ruhnke, Mickey Rockey, Vice-President, Glenda Burkhart; Secretary and

Treasurer, Sue Gilmore. SEATED: Sponsor, Miss Rhudy.



# Library Club



FRONT ROW: Ina Whetstine, Sandra Losson, President, Sue Gilmore; Secretary, Jean Tracy; Susie Lewis, Diana Chase. SECOND ROW: Nona Thornton, Joy Thornton, Tommy Twombly, Betty Abbett, Sharon Davies, Tommy Yates. THIRD ROW: Harold Dillenback, Sharon Thornton, Donna Thornton, Nancy Ruhnke, Johnny Quick, Robbie Kuhnert, Glenda Burkhart, Advisor, Mrs. Oliver.

# Science Club



Sonny Mooney, President; Stephen Foster, Vice-President; Larry Sandy, Glenda Burkhart, Sue Gilmore, Larry Simpson, (deceased), Secretary-Treasurer, John Weber; Advisor, Mr. Gampper.

# Spanish Club



FIRST ROW: Irene Lehman, Sharon Davies, Sandra Losson, Shirley King, President, Kay Ainlay; Glenda Burkhart. SECOND ROW: Gerald Myers, President, (deceased) Larry Simpson; Gary Winder, Geraldine Clary, Vice-President, Mickey Rockey; Raymond Prohaska, Bill Foster. NOT PICTURED: Secretary, Betty Clary; Katherine Stahl.



# Junior Senior Play '59



Oops! Pardon me!



The proud parents



Left behind



The young lovers



Now listen Dad!

## MAUDIE AND THE OPPOSITE SEX

|                  |       |                 |
|------------------|-------|-----------------|
| Mrs. Mason       | ..... | Mary Winkle     |
| Mr. Mason        | ..... | Larry Sandy     |
| Maudie           | ..... | Sue Gilmore     |
| Sylvia           | ..... | Sandra Losson   |
| Lynn             | ..... | Glenda Burkhart |
| Mr. Endicott     | ..... | Paul Lehman     |
| Davy             | ..... | Ronnie Ruhnke   |
| Bev              | ..... | Ina Whetstine   |
| Sandy            | ..... | Norma Ruhnke    |
| Marge            | ..... | Nancy Ruhnke    |
| Pat              | ..... | Betty Abbett    |
| Terry            | ..... | Donna Thornton  |
| First Lifeguard  | ..... | Gary Winder     |
| Second Lifeguard | ..... | Donnie Mullins  |
| Student Director | ..... | Billy Foster    |
| Director         | ..... | Ellen Warren    |



She got her man!



What a headache?

Caught in the act!

Local color



A happy group





# Pep Club



**A-TEAM CHEERLEADERS:** Kay Ainlay, Kathy Studer, Sharon Ackles, Chloe Young. **B-TEAM CHEERLEADERS:** Linda Firkins, Judy Edgerton, Bonnie Ruhnke, Sue Ainlay. **FIRST ROW:** Glenda Burkhart, Norma Ruhnke, Joy Thornton, Pauline Studer, Nona Thornton, Betty Abbett, Nancy Ruhnke, Sue Gilmore. **SECOND ROW:** Shirley King, Sharon Ramsey, Joyce Gaul, Jean DeGolyer, Katherine Stahl. **THIRD ROW:** Gary Winder, Lynda Miner, June Snodgrass, Susie Lewis, Connie Ruhnke, Doris Thornton, Mary Winkel, Sharon Thornton, Donna Thornton, Advisor, Mrs. Volker. **FOURTH**

**ROW:** Harold Whitten, Richard Norris, Linda Meier, Linda Ruhnke, Dixie Wykert, Ida Howland, Dale Bembrick, Robbie Kehnert. **FIFTH ROW:** Mickey Rockey, Jim Clark, Bill Norris, Jim Etherton, Gary Sandy, Henry Keller, DeWayne Reder, Johnny Quick, Donnie Wykert, Bernard Koehler, Jack Thornton. **SIXTH ROW:** Raymond Prohaska, Bill Foster, Allen Brownlee, Mike Williamson, Sonny Mooney, Larry Simpson (deceased), Harold Dillenback, Tom Twombly, Jerry Murphy.



**STANDING:** President, Pauline Studer; Vice-President, Nona Thornton; Sponsor, Mrs. Volker. **SEATED:** Secretary, Norma Ruhnke; Treasurer, Joy Thornton; Student Council Representative, Betty Abbett.



Kathy Studer  
She never failed



## “A” Team Cheerleaders



Kathy Studer Kay Ainley Sharon Ackles Chloe Young

## “B” Team Cheerleaders



Linda Firkins Judy Edgerton  
Bonnie Ruhnke Sue Ainlay



# When We Were Young



1. Sonny Mooney 2. Stephen Foster 3. Harold Stevens 4. David Lichliter 5. Larry Sandy 6. Kathy Stahl 7. Pat Smith 8. Nona Thornton 9. Donnie Mullins 10. Norma Del Ruhnke 11. Henry

Keller 12. Ina Fay Whestine 13. Allen Brownlee 14. Glenda Burkhart 15. Betty Abbett 16. Richard Norris 17 Paul Lehman 18. John Weber 19. Nancy Ruhnke 20. Sue Gilmore





*Sports* | *59*



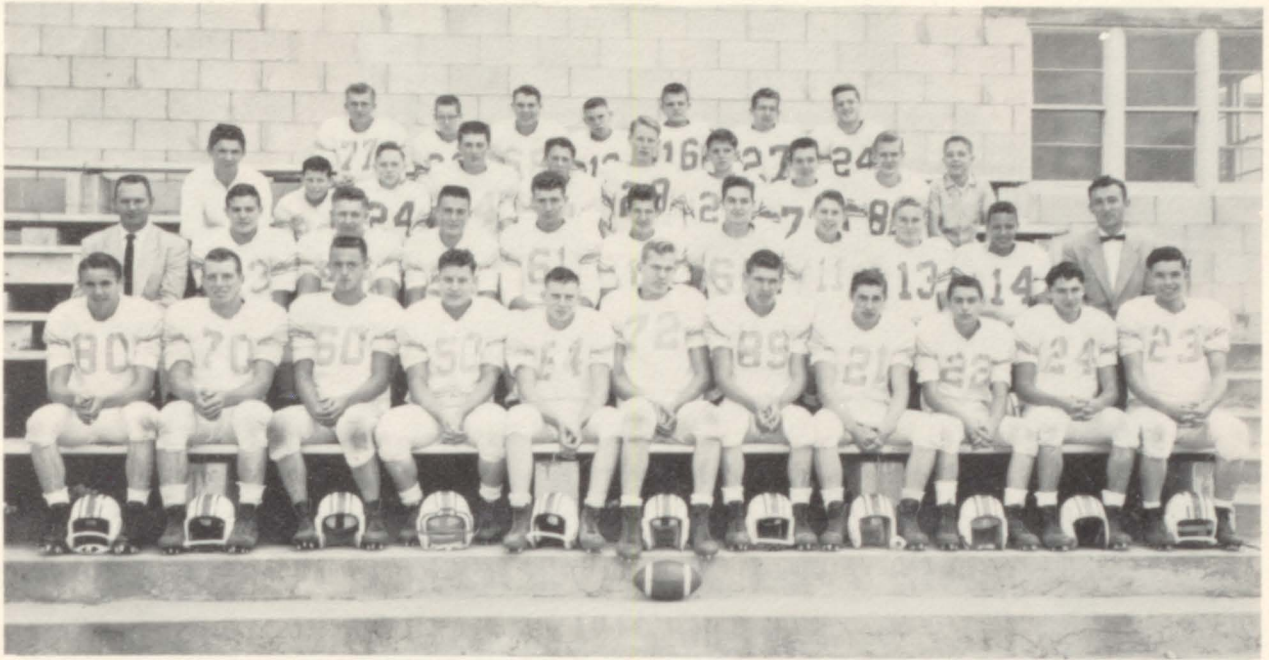
Coaches



HEAD COACH      ASSISTANT COACH  
Don Clark      Fred Gampper



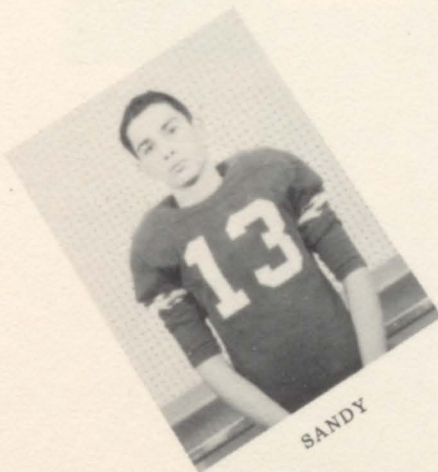
# Football Squad '58-'59



FRONT ROW: Left to Right; Paul Lehman, Gary Winder, Larry Schoenfelder, Larry Smith, Jack Thornton, Ray Prohaska, Bernard Koehler, Dale Robertson, Larry Sandy, Mickey Rockey, Ronnie Ruhnke. SECOND ROW: Coach Clark, Henry Keller, Harold Whitten, Steve Mitchell, Gerald Myers, August Gronniger, Jerry Murphy, Bill Foster, Larry Wykert, Tommy Yates,

Assistant Coach Mr. Gampper. THIRD ROW: Trainer, Donald Wykert, Garry Sandy, Richard Wright, Ray Thompson, Dennis Smith, Bill Chase, James Clark, Warren Cluck, Tom Twombly, Trainer, Robert Clark. FOURTH ROW: Larry Kanning, James Etherton, Robert Kuhnert, John Howland, Robert Keller, Harold Dillenback, John Quick.

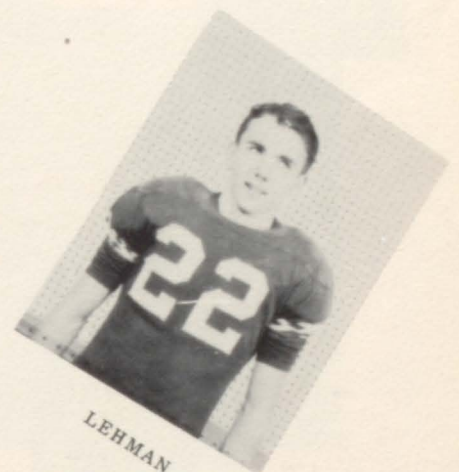
## Tri-Captains



SANDY



ROCKEY



LEHMAN



# Football Squad



H. KELLER



R. RUHNKE



H. WHITTEN



R. PROHASKA



B. KOEHLER



J. THORNTON



G. MYERS



B. FOSTER



G. WINDER



J. MURPHY



L. SMITH



A. GRONNIGER



D. ROBERTON

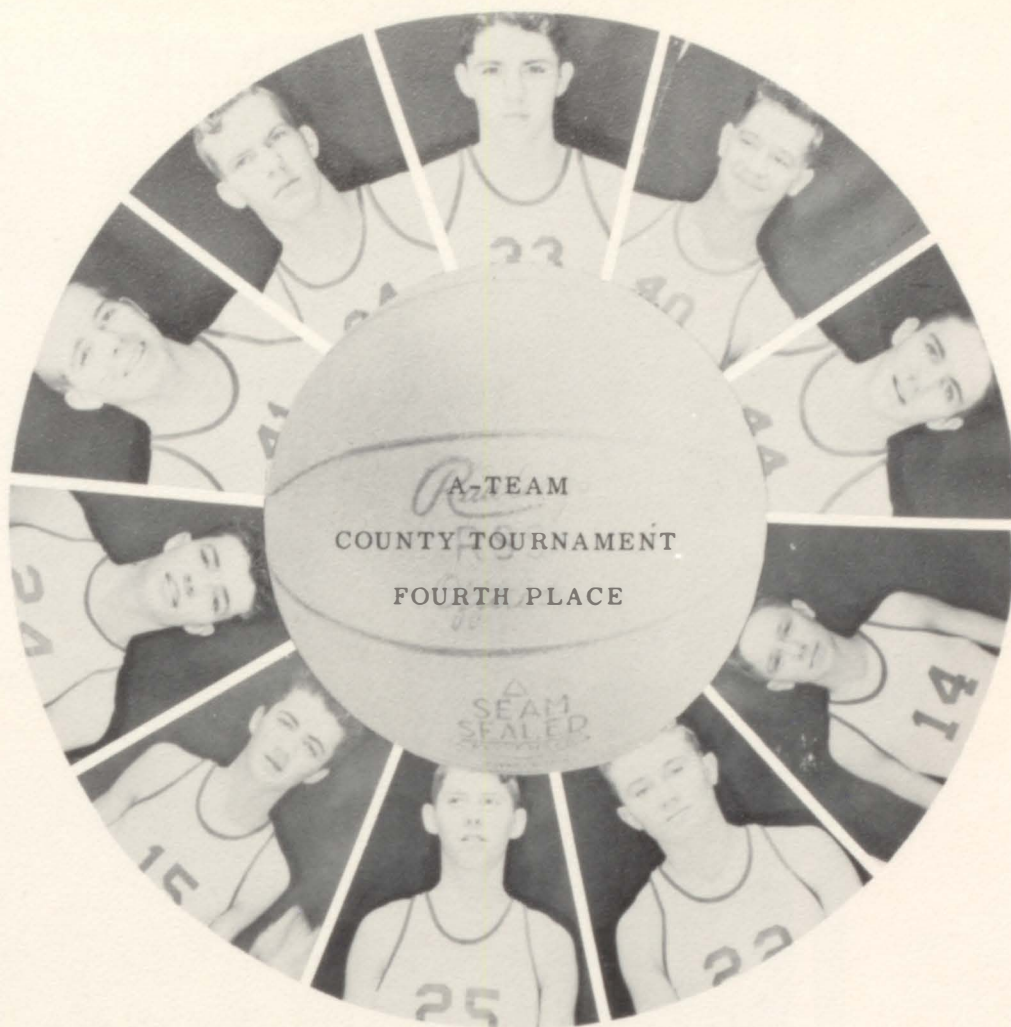


S. MITCHELL



L. SCHOENFELDER





Gary Winder, Raymond Prohaska, Mickey Rockey, Allen Brownlee, Paul Lehman, Ronnie Ruhnke, Ray Thompson, Bill Foster, Larry Wykert, Richard Wright.

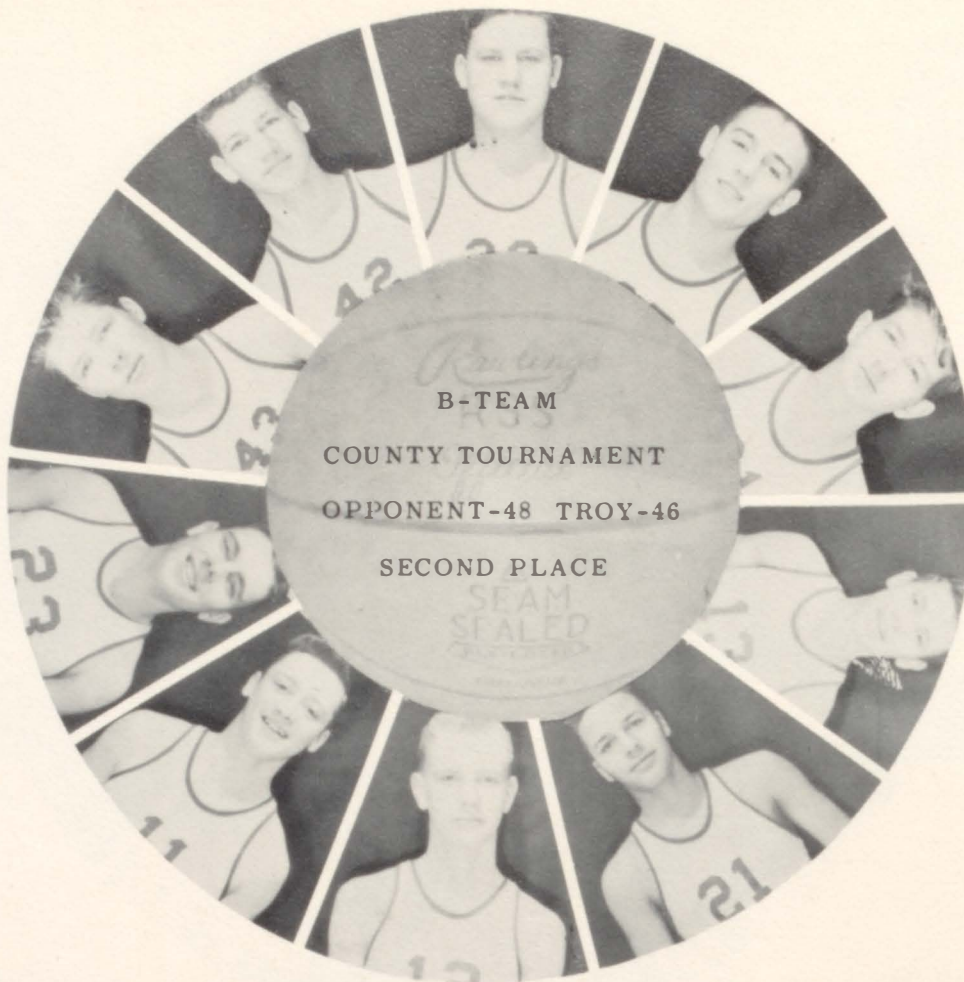


Jump high, Raymond!



Two more for Troy





TOP: Mike Williamson, August Groninger, Larry Smith, Steve Mitchell, Harold Dillenback. BOTTOM: Robert Kuhnert, John Quick, Tom Twombly, Tom Yates, John Howland.



R. ABBETT



J. CLARK



G. SANDY



L. KANNING





Humor 59



# Snapshot Contest



First Place  
Paul Lehman and Edda Kay Juhl entered  
by Edda Kay Juhl.



Second Place  
Sharon and Karon Brenner entered by  
Sharon Brenner.



Third Place  
Joyce Gaul entered by Jean Dale  
DeGolyer.

## Honorable Mention



1. Sue, Glenda, and Nancy 2. Joy and Sharon Thornton 3. (center) Jean Dale DeGolyer 4. Norma Del Ruhke





## K-36 League Champions County Champions

FIRST ROW: Left to Right: Mickey Rockey, Gary Winder, Ronnie Ruhnke, John Weber, Paul Lehman, Larry Schoenfelder, Steve Mitchell, Dale Robertson. SECOND ROW: John Quick, Larry Sandy, DeWayne Reder, Larry Smith, Roger Ruhnke, Bernard Koehler, Jack Thornton, John

Marriott, John Howland. THIRD ROW: Larry Wykert, Bill Foster, Bill Ashworth, Harold Dillenback, Richard Abbett, Steve Foster, Tom Twombly, Robb Kuhnert, August Gronniger, Tom Yates.



County Mile Relay



County 880 Relay



Medley Relay



K-36 880 Relay



Track Trophies





Tom drives for home



Knocker goes over



Rock digs



Larry heaves



Let's go, Rock



Ronnie goes



Paul makes it



Dale shows form



Nice handoff



Ruhnke's close



Trojans rest



Mitchell tries

K-36 mile relay





## T. H. S. Band



STANDING: Jimmy Clark, Linda Firkins, DeWayne Reder, Glenda Burkhart, Mr. Wilson Director. BACK ROW, Sitting: Left to Right: Jimmy Etherton, Roger Freel, Nancy Harter, Edda Kaye Juhl, Allen Brownlee, Johnny Quick, Steve

Mitchell. FRONT ROW: Nancy Ruhnke, Tommy Twombly, Sue Gilmore, Judy Edgerton, Betty Abbett, Ronnie Ruhnke, John Weber, Majorette-Kathy Studer.

## Girls' Glee Club



FRONT ROW: Left to Right: Ina Faye Whetstine, Betty Abbett, Dixie Wykert, Joy Thornton, Linda Meter, Katherine Stahl, Sharon Thornton. BACK ROW: Mr. Wilson Director, Mary Winkel, Ida

Raye Howland, Donna Thornton, Sue Gilmore, Nancy Ruhnke, Kathy Studer, Rosalee Wright, Linda Ruhnke, Accompanist-Glenda Burkhart.





### Brass Quartet

Nancy Ruhnke, Tommy Twombly, John Quick, Steve Mitchell.

### Girls' Trio

Glenda Burkhart-accompanist, Sue Gilmore, Kathy Studer, Linda Meier.



### Girls' Sextet

Linda Meier, Betty Abbett, Rosalee Wright, Sue Gilmore, Kathy Studer, Dixie Wykert, Glenda Burkhart-accompanist.



# Big Six, K-36 One Act Play



## PLAY CAST

|                   |       |                  |
|-------------------|-------|------------------|
| Glenda Burkhart   | ..... | Eve              |
| Larry Sandy       | ..... | Guy              |
| Steve Mitchell    | ..... | Jim              |
| Kathy Studer      | ..... | Ann              |
| Judy Edgerton     | ..... | Student Director |
| Mrs. Ellen Warren | ..... | Director         |



Say, Jim-----

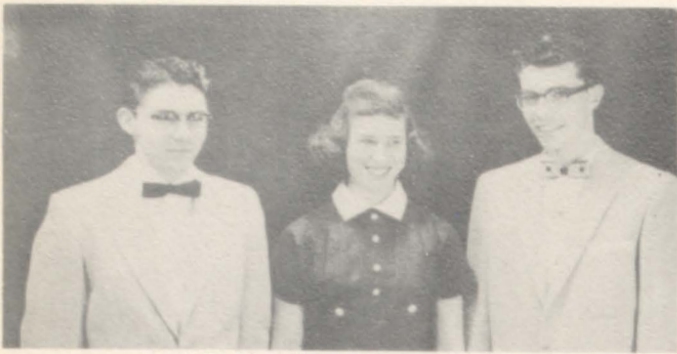
Don't cry, Ann



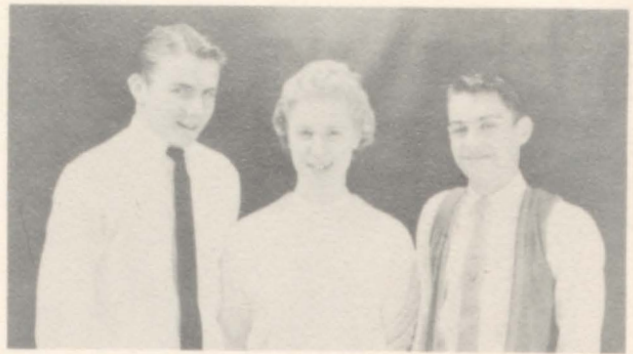
Guy. the great lover



# Girls' and Boys' State '58/'59



1959  
Mickey Rockey, Donna Thornton, Ronnie Ruhke



1958  
Paul Lehman, Glenda Burkhart, Larry Sandy

## Faculty Picnic '59



Timmy, leave that snake alone!



Mmmmmmm, good!



The wives, and Mr. Oliver!



Here, eat and be quiet!



The kids went too!



Look at that spread!



# Jr. Sr. Prom 1959



Gerald sings



On a desert island



Norma speaks



Banquet tables



Zany sailors



State Corn Judging Champs

DeWayne Reder,  
Ray Thompson,  
Bill Foster.



Apple Blossom Queen  
Kathy Studer





# Senior Trip to Bagnall Dam-1959



Mr. Talbot in Cathedral at Bridal Cave.



Now we got him!



Whizzo explains



Watch the feathers fly



Taking money from children!



Breakfast in the Barefoot Club



After a wet boatripe!

Sleep Walker



May he rest in peace

Smiles at 2:00 A.M.



Just the bare necessities

You have them beat, Mrs.







Pep Club Picnic



I'm coming, says Sharon!



Pep Club on bus.



John's tickled pink.



Battle of the bulge.



Don't take my cards.



I got it, Joy!



Chorus line?



Louie builds the fire.



TURN ME LOOSE

Harold and Johnnie goofing off.



Louie! Norma! Stop!, says Kay.



Card Sharks







Japanese "Linda"



"Tall Paul" Lehman



"I Believe You Better Leave," sings Kathy.



Guess Who?



Lab work. John?



Smile pretty, Mrs. Goss!



Steve in the Lab



Larry does study!



Susie and Linda in the lab.



TROJAN HOMECOMING

SHANGRI-LA

Ah-Ha-a-a



Home Ec. II Girls.



Queen Shirley and Mickey.

Louie and his Dad





# Graduation



FRONT ROW: Left to Right: Harold Stevens, Sonny Mooney, David Lichliter. SECOND ROW: Betty Abbett, Joy Thornton, Nona Thornton, Nancy Ruhnke, Pat Smith, Kathy Stahl. THIRD ROW: Ina Whetstine, Glenda Burkhart, Sue Gilmore, Mary Smith, Norma Ruhnke, Pauline

Studer, Ruth Ruhnke. BACK ROW: Henry Keller, Paul Lehman, John Weber, Allen Brownlee, Richard Norris, Steven Foster, Donald Mullins.

CLASS COLORS

BLUE AND WHITE

CLASS FLOWER

BABY ORCHID

CLASS MOTTO

WHO DOES NOT ADVANCE, FALLS BEHIND





1. Come on, boys! 2. Sez who? 3. Ready to spring. 4. For jazzy pep assemblies. 5. Mr. Ginter speaks. 6. Sure we rehearse! 7. Crazy for coffee 8. One of our lettermen. 9. What a mess! 10. So domestic! 11. No copying, please! 12. Ready for winter. 13. Ye gads! 14. Get him, Thor! 15. Our busy counselor. 16. One of our trash problems. 17. Nancy's at it again. 18. Pretty

girls everywhere. 19. Jimmy and his girl, Sharon Brenner. 20. Drinking partners. 21. Bottoms up. 22. Go, John go! 23. Guess who! 24. Grade highlights. 25. Blonde Betty. 26. Harold and classmates ponder. 27. Plow day. 28. What do I do now? 29. Buck up girls.



# *Annuals of Distinction*

FOR OVER TWENTY YEARS



HIGH SCHOOL  
COLLEGE  
UNIVERSITY  
ANNUALS

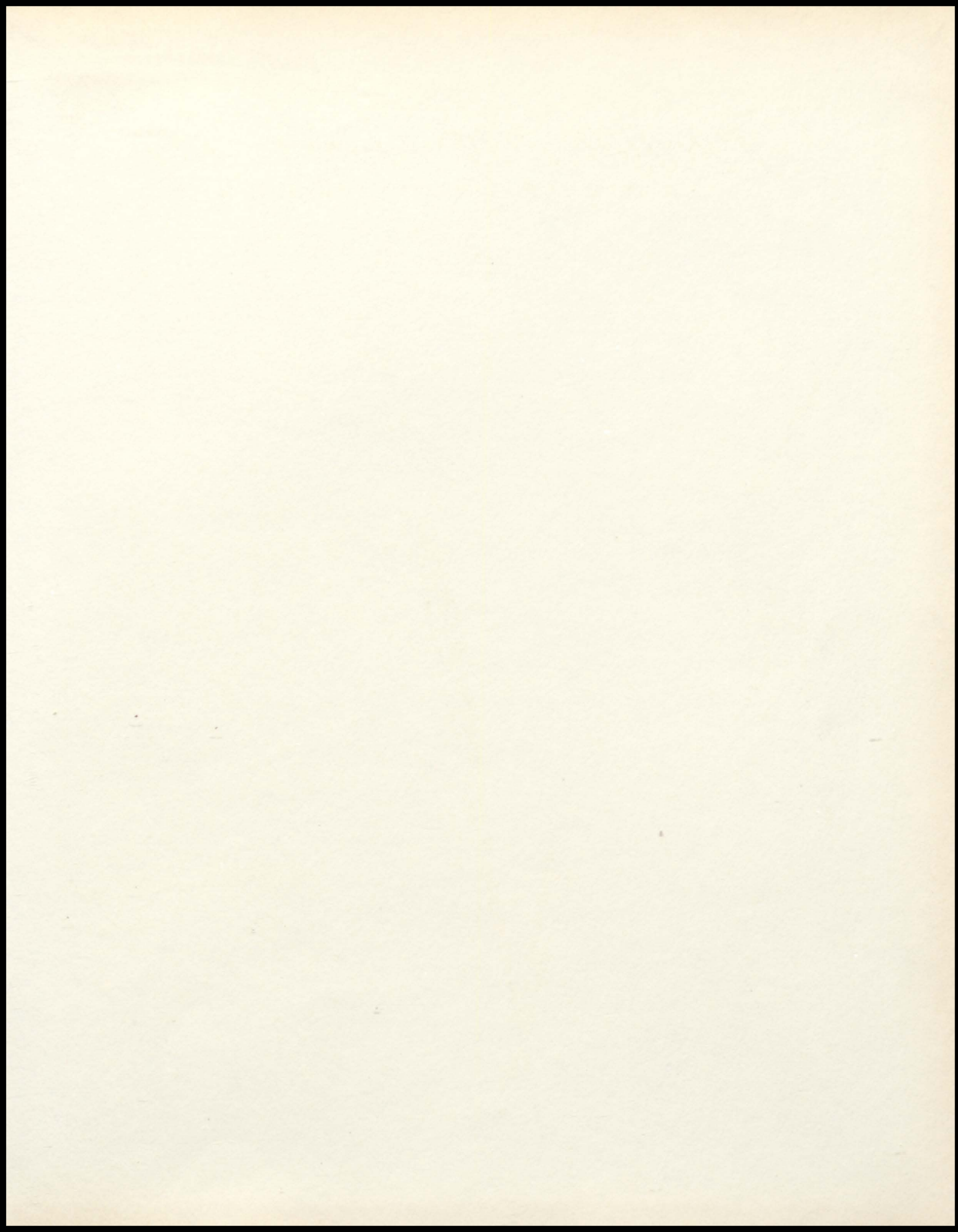
*artistically created  
by master craftsmen*

*Walsworth*

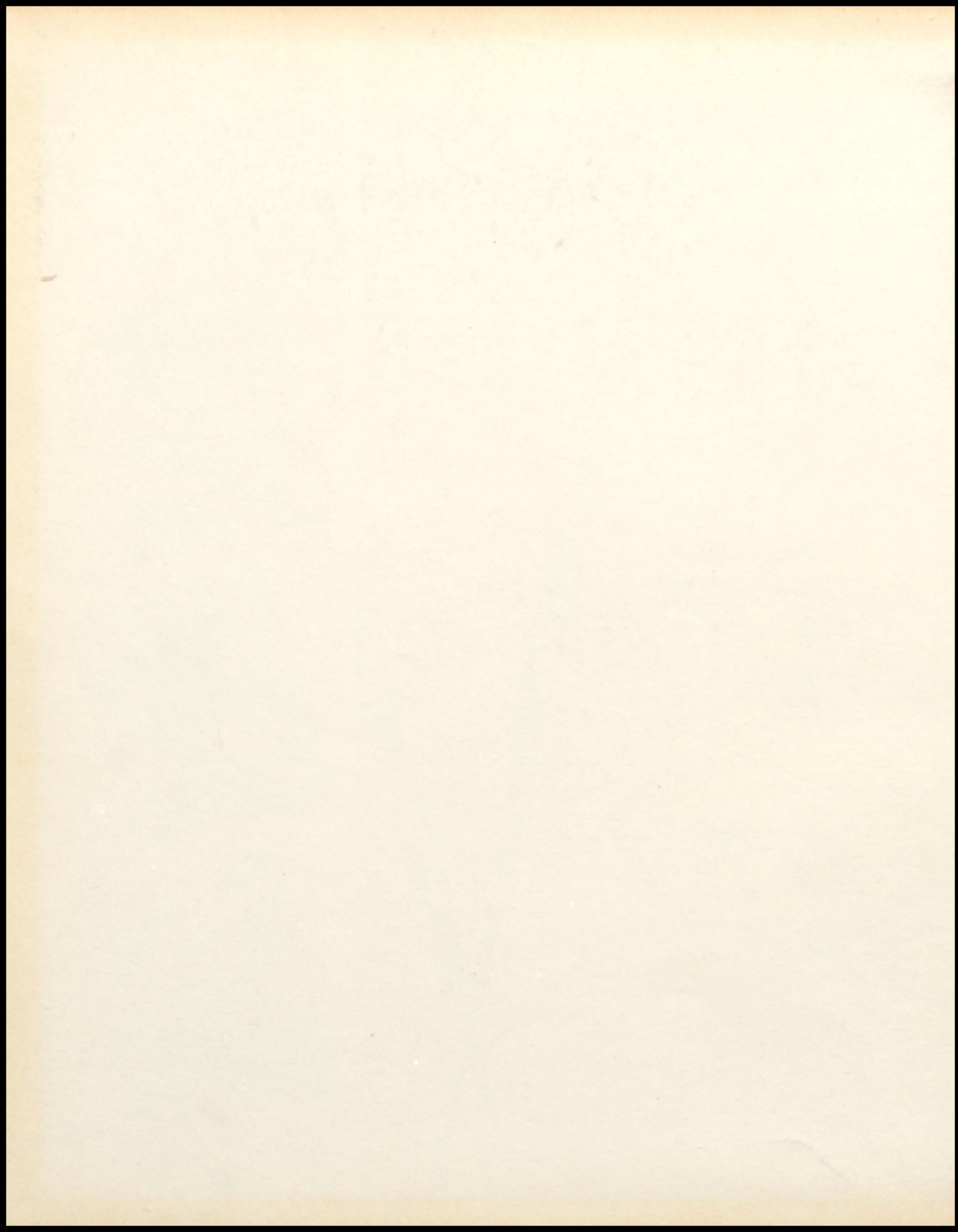
PUBLISHING COMPANY

MARCELINE, MO.

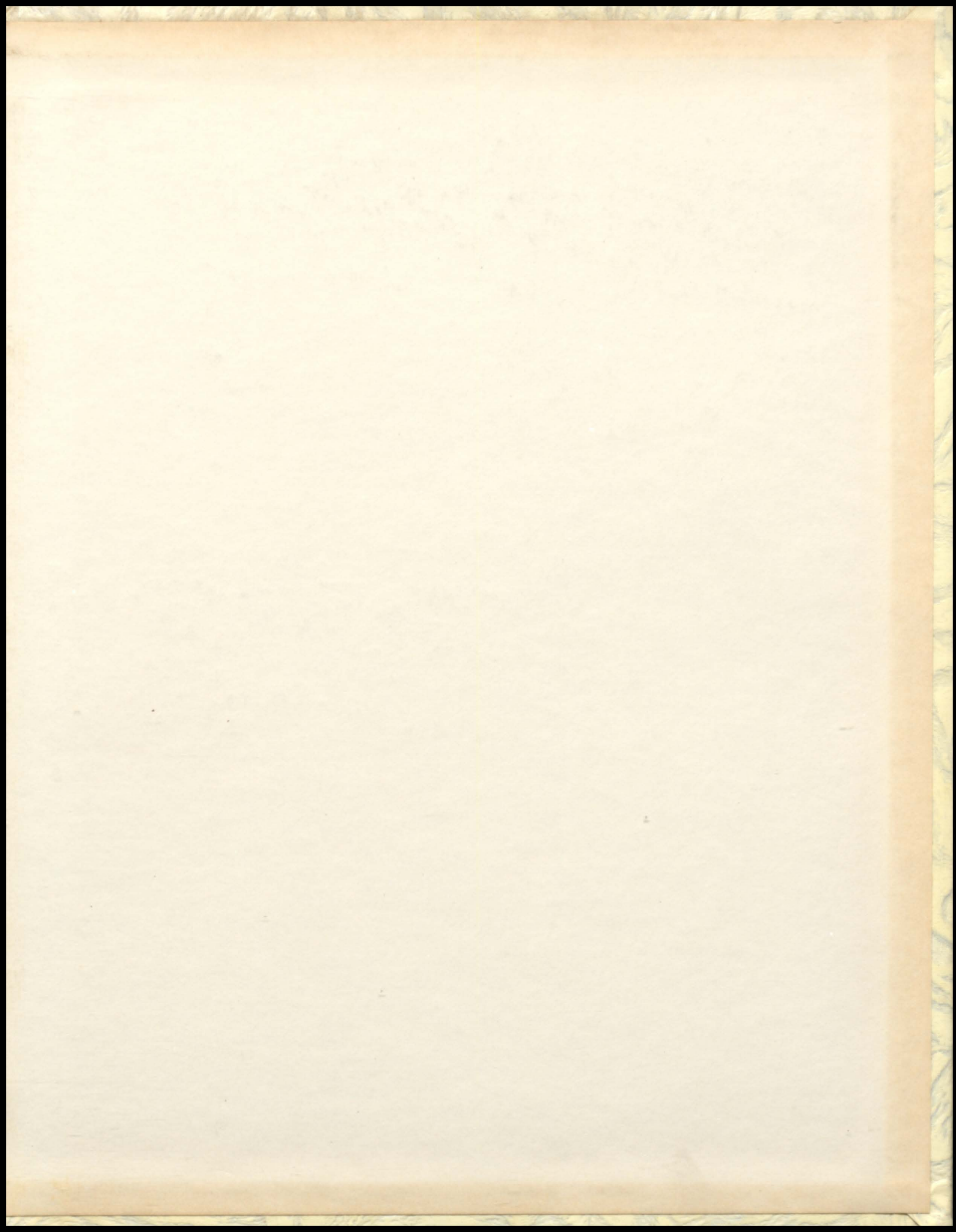
















WALSORTH