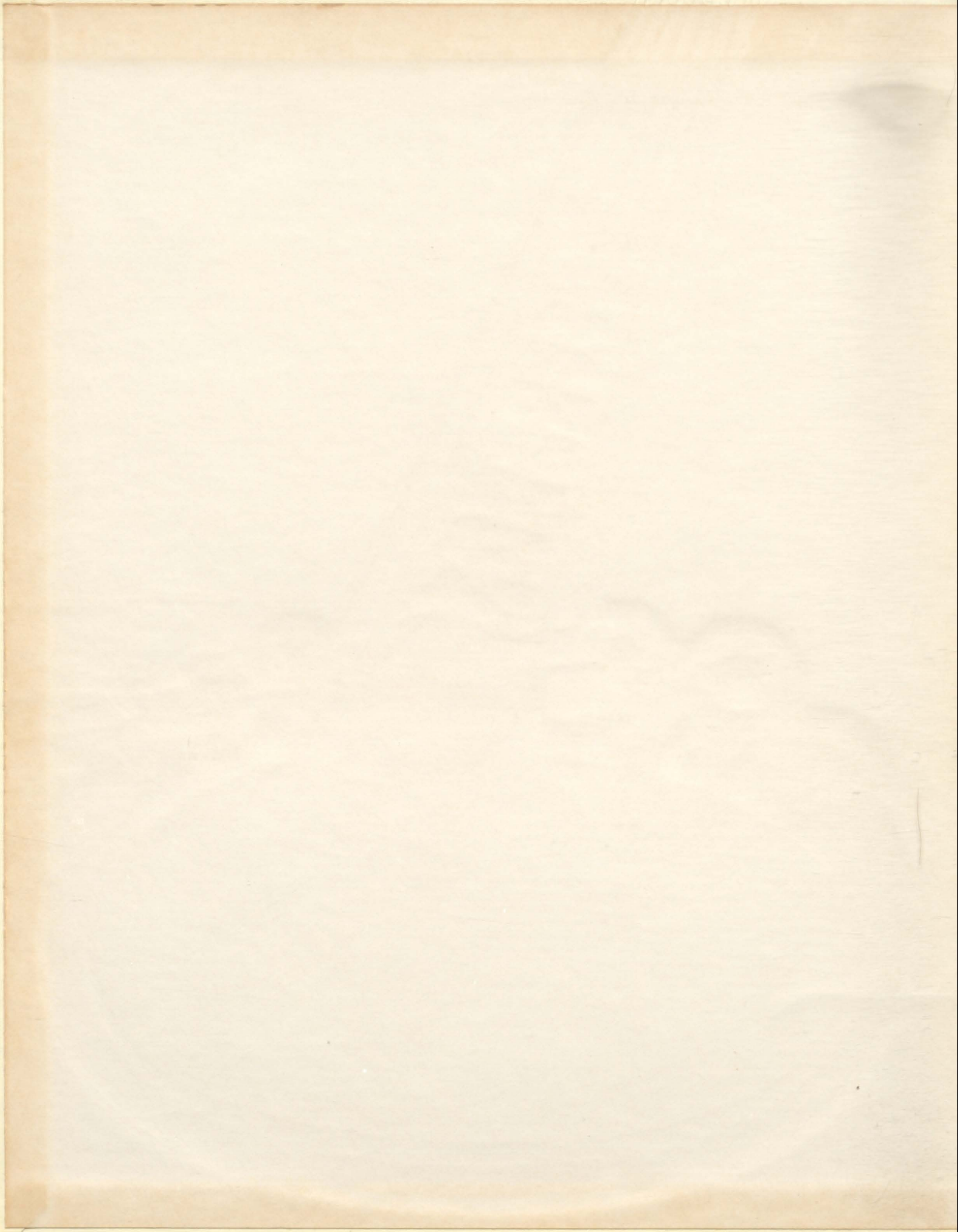
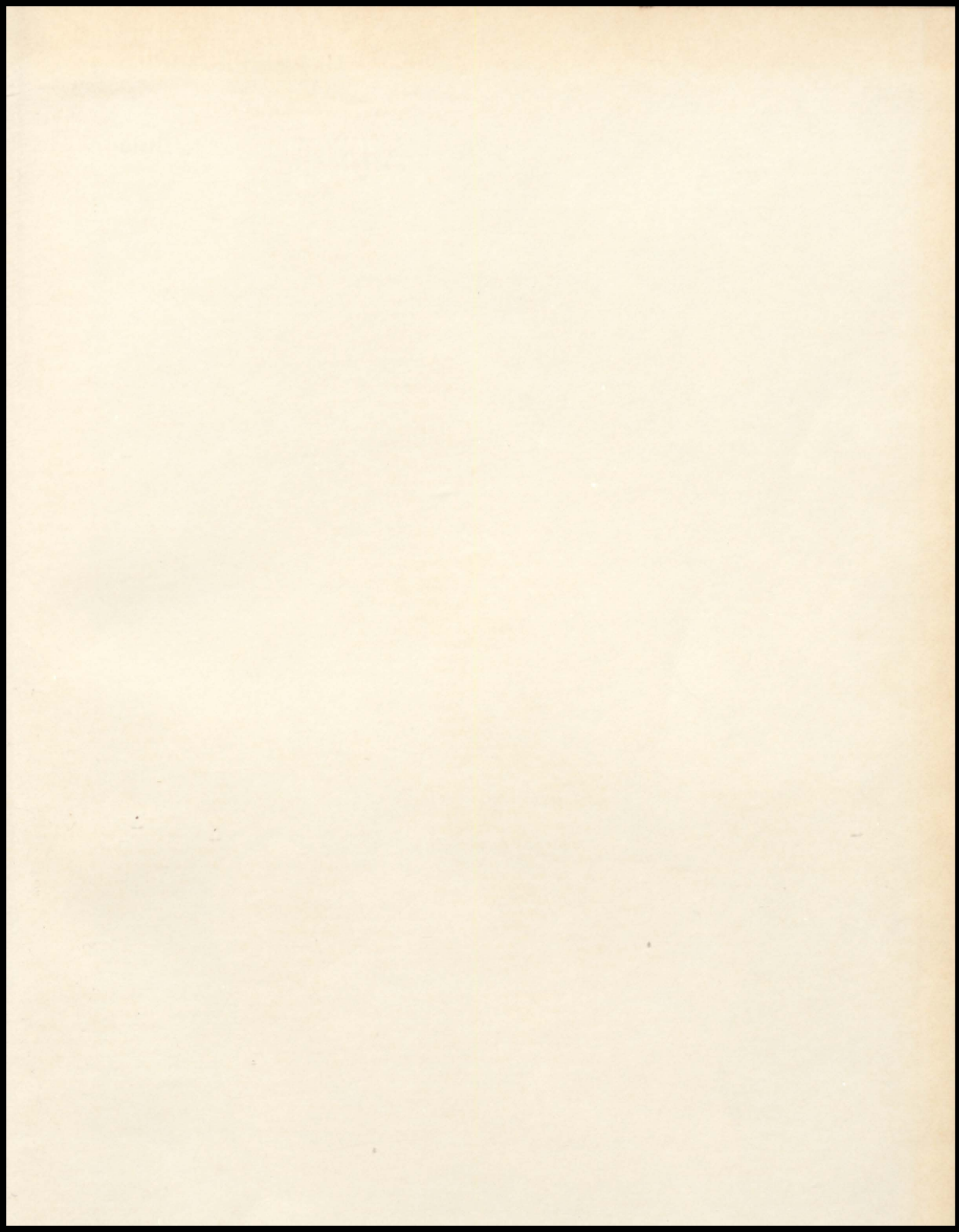


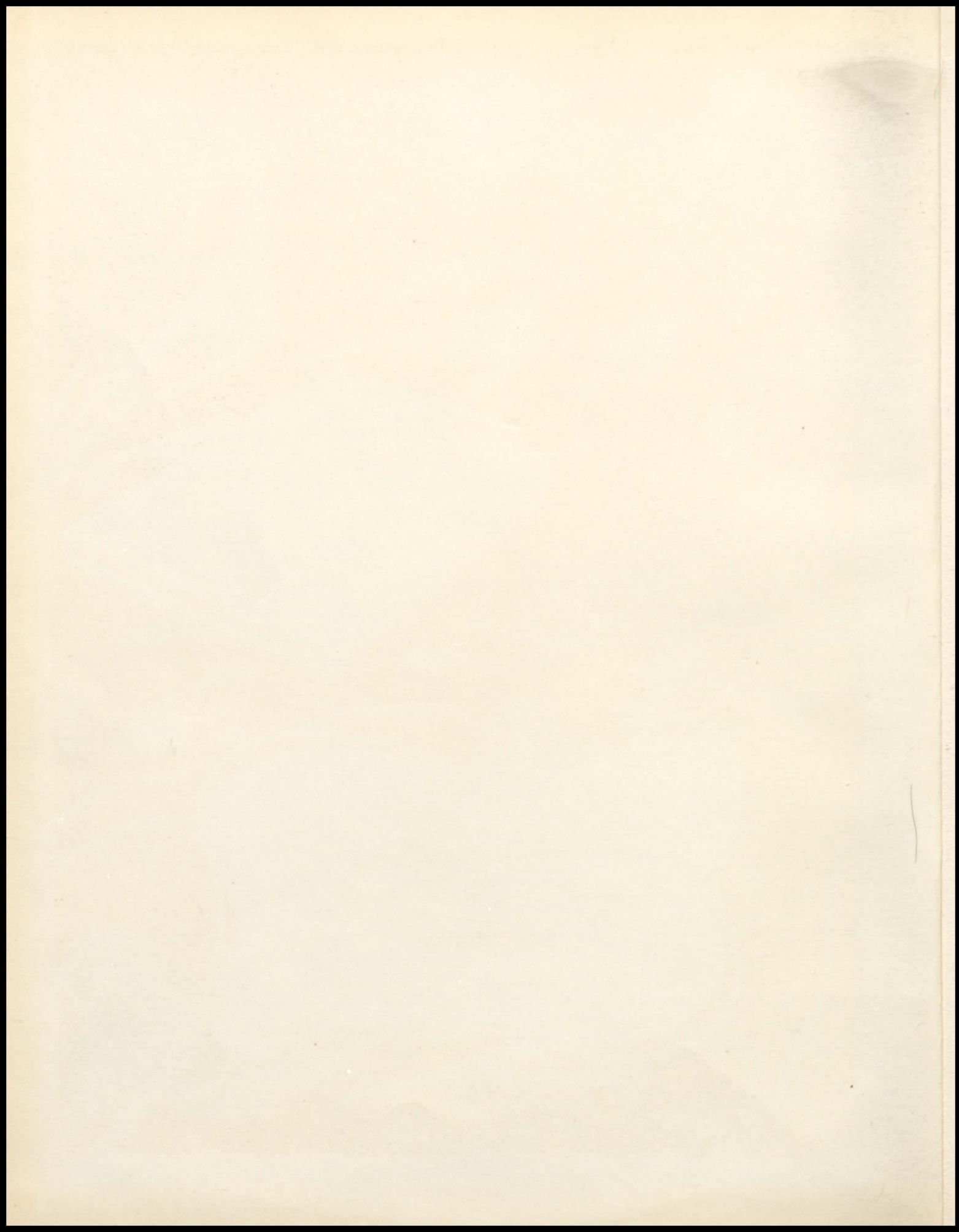
The image shows a close-up of a book cover with a textured, light-colored surface. A large, embossed design is centered on the cover. It features a large, stylized number '51015161718' that is oriented vertically. The number is composed of several segments, with a hyphen between '51015' and '161718'. Below the number is a decorative border that includes a city skyline with various buildings and a large star on the right side. The entire design is embossed into the cover material.

THE TROJAN

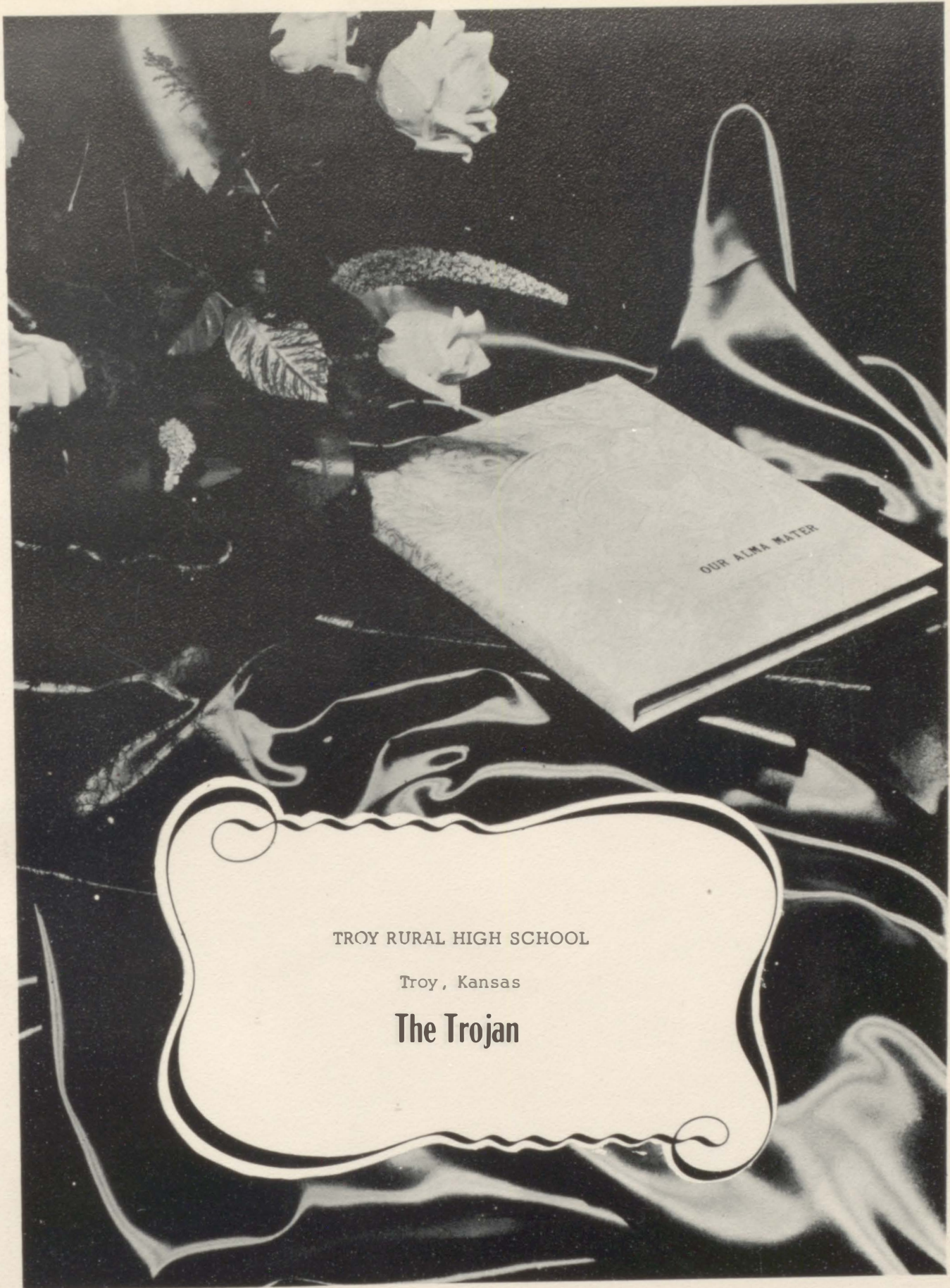












TROY RURAL HIGH SCHOOL

Troy, Kansas

# The Trojan

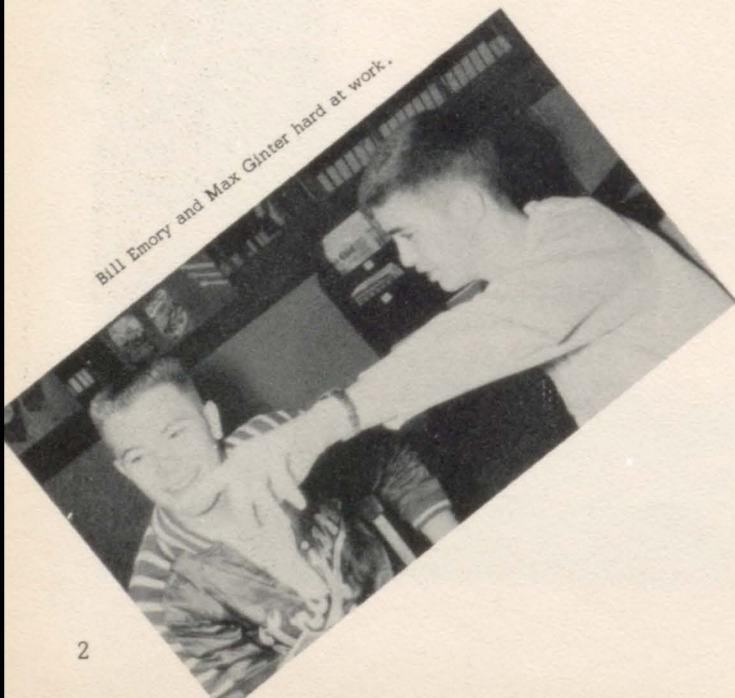




**SEATED:** Annette Howland, Business Manager; Fredrick Folsche, Photographer; Patsy Long, Student Editor, Nancy Weber, Activity Pages; Sue Gilmore, Junior Class Representative.

**STANDING:** Mr. Talbot, Sponsor; Joe Gronniger, Snapshot Pages; John Thomas, Class Pages; Bill Emory, Sports Pages; Leona Miller, Snapshot Pages; Kitty Ford, Class Pages; Max Ginter, Sports Pages; Doris Kiger, Activity Pages; Patty Williamson, Photographer; Mrs. Oliver, Sponsor.

## Annual Staff



*Bill Emory and Max Ginter hard at work.*



*Fixing the snapshot pages.*





*Dedication*





MISS FLORENCE RHUDY

## Dedication

We, the senior class of '58, wish to dedicate our annual to you, Miss Rhudy, in appreciation of the fine interest and co-operation you have shown to us these past four years. You have not only taught us to enjoy mathematics, but you also taught many of our parents before us. In addition to this, you have devoted much of your time and effort to sponsoring several of our organizations. Yes, we are proud to dedicate our annual to you in observance of your unfailing service to our school and community for these past thirty-five years.



Class Dismissed



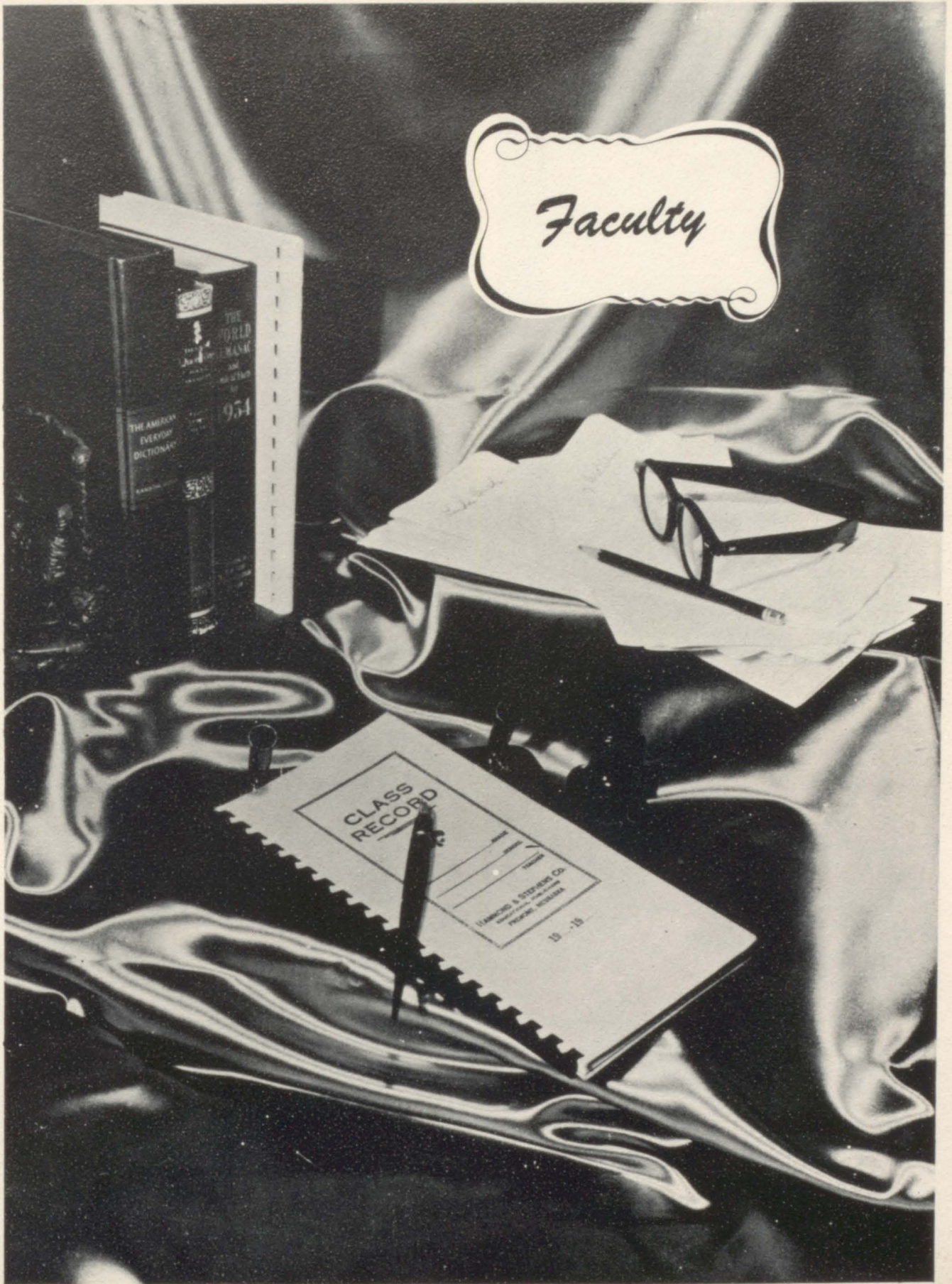
Miss Rhudy In Class

Miss Rhudy On Her Way Home





# Faculty







M.M. GINTER  
Principal

## Principal's Message

In educating the children of our country we should not think of the classroom as the beginning or end of education. Other important contributors are the home, the church, and the community. Education is life in the making. The schools help to guide, direct, and speed the process.

Sincerely yours,

A handwritten signature in cursive script that reads "M.M. Ginter".

## School Board

BEN WILLIAMSON  
Clerk

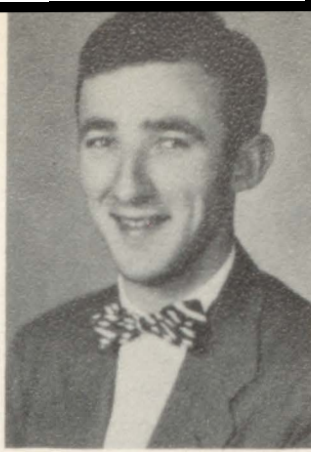
RAY TWOMBLY  
Director

RAYMOND GAUL  
Treasurer





# FACULTY



**ELLEN M. WARREN**  
B. S. from Kansas State. Spanish, English I, II, and III. Sponsor of Los Aficionados Del Espanol, One-Act Play, and Trojan Trumpet.

**FREDRICK GAMPPER**  
B. S. from St. Benedict, M. A. from Kansas City University. Biology, General Science, Physics, Chemistry. Sponsor of Science Club, Co-Sponsor of Student Council and Junior Class. Assistant to the Coach. Junior Play

**FLORENCE N. RHUDY**  
A. B. from Kansas University. Algebra I, and II, Plane and Solid Geometry, Trigonometry Sponsor of Freshman Class and National Honor Society.



**H. DONALD CLARK**  
B. S. from Pittsburg. Industrial Arts, Drivers Training. Head Coach. "T" Club Sponsor. Sophomore Class Sponsor.

**J. B. WILSON**  
B. S. from Northwest Missouri State College, Maryville, Missouri. Graduate work at Kansas University. Sponsor of Band, Girls Glee Club, Dance Band, and Assistant Freshman Class Sponsor.



**MRS. C. W. OLIVER**  
A. B. from Western Maryland College, Westminster, Maryland. English I, and II. Sponsor of Library Club, Annual Staff, and Senior Play. Assistant Senior Class Sponsor.

**LEROY E. TALBOT**  
B. S. from Kansas State College, Graduate Work from KSC. Typing, Book-keeping, Secretarial Training, Shorthand, Guidance and Counseling. Assistant Sponsor of Trojan Trumpet and Assistant Sponsor of the Annual.

**ANNA M. GOSS**  
B. S. from Kansas State in Manhattan, Home Economics I, II, and III, and Physical Education. Supervises Hot Lunch and Concession Stand. Co-Sponsor of Junior Class and Student Council. Junior Play.



**STANLEY LARSON**  
B. S. from Kansas State. Vocational Agriculture, Industrial Arts. Sponsor of FFA and Senior Class Sponsor. Senior Play

**RILLA VOLKER**  
B. A. from University of Nebraska. American History, World History, Constitution, Economics, Psychology. Co-Sponsor of the Sophomore Class and Sponsor of Pep Club.







JANITORS  
Louie and John



COOK  
" Aunt Jenny"



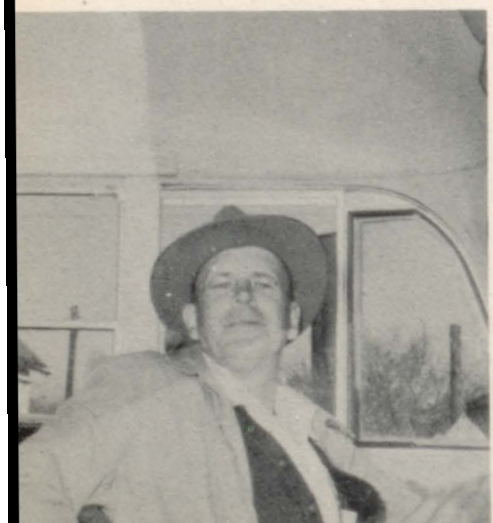
" LITTLE OFFICE GIRL"  
Mrs. Ginter

# School Personnel



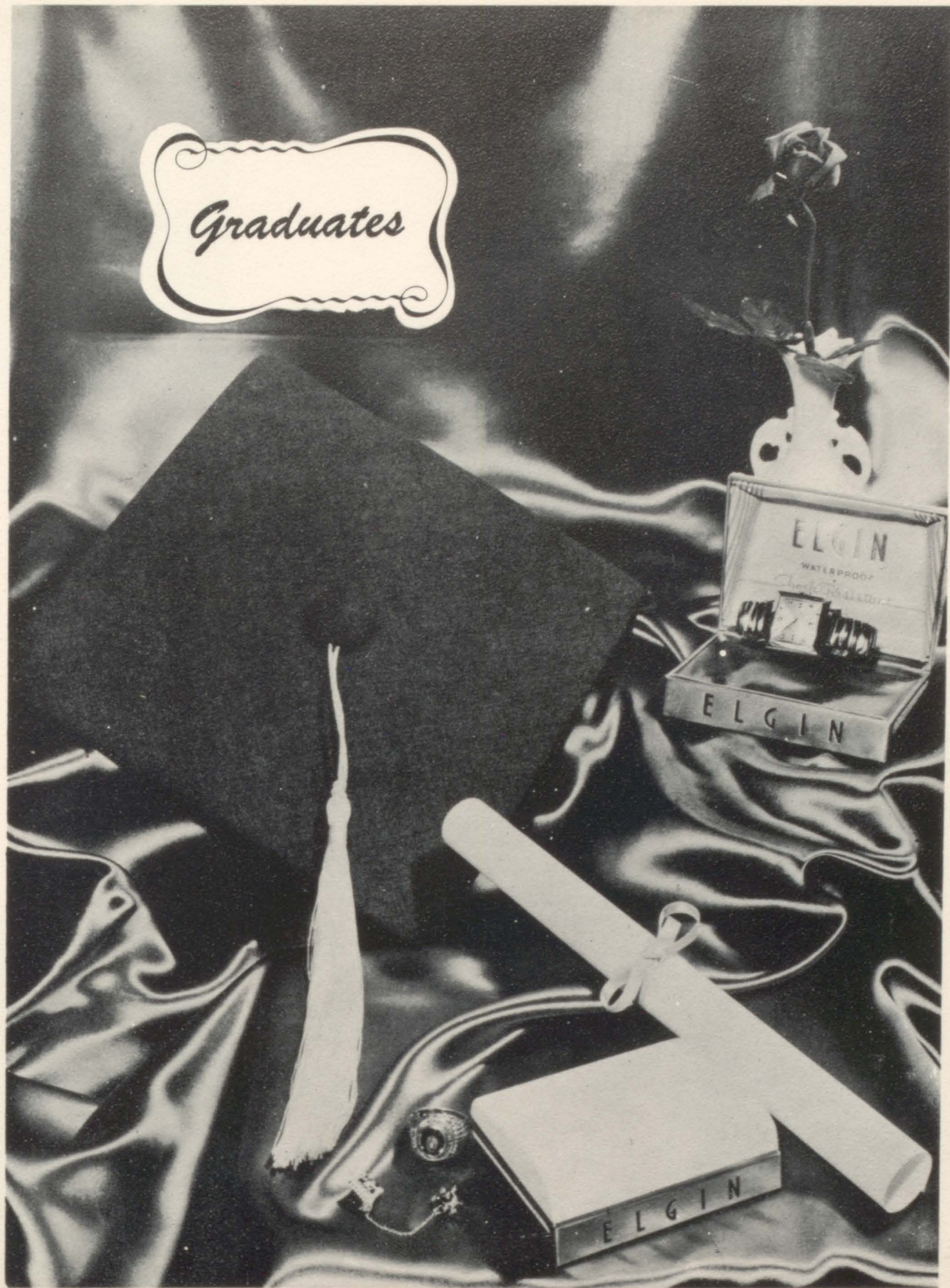
KITCHEN HELP  
Glenda B., Leona M., Mary A., Sue G.  
Mrs. Goss, (Mr. Goss,) Aunt Jenny.

BUS DRIVERS  
Alfred Monroe   Louie Thomas   Alva Cluck

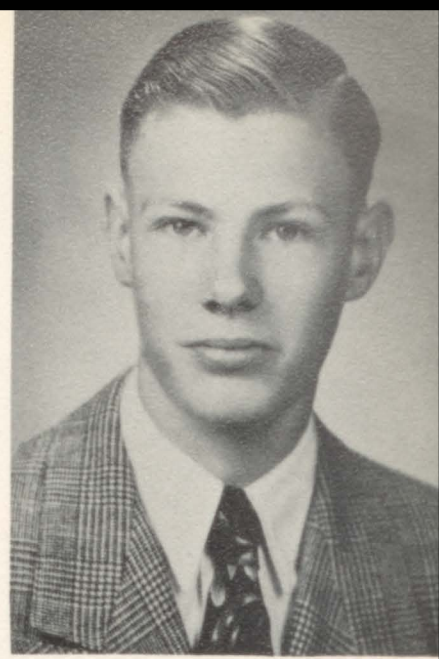




*Graduates*





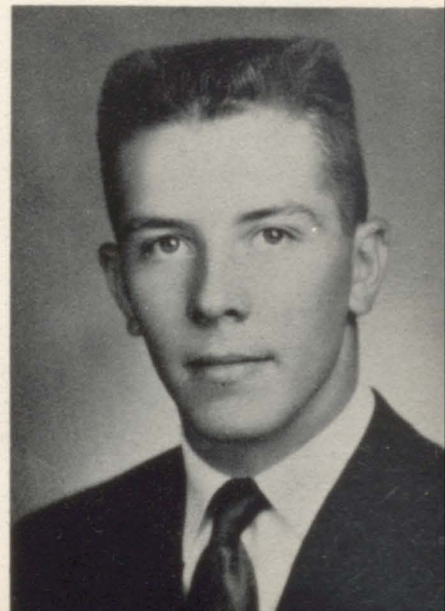


JOSEPH GRONNIGER  
President



LEONA MILLER  
Secretary

JAMES WINDER

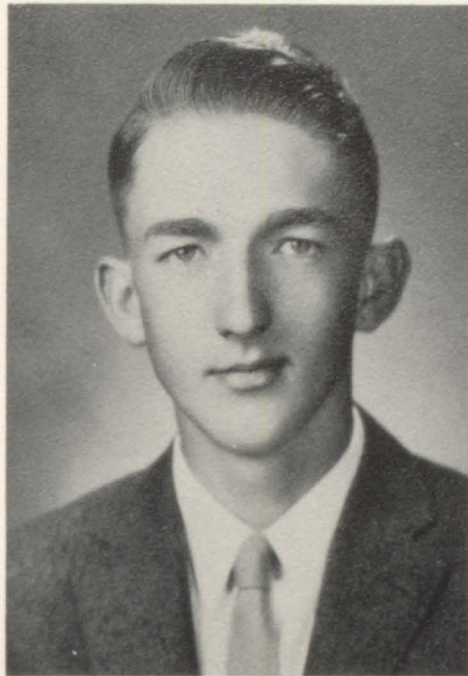


ANNETTE HOWLAND  
Reporter





JOHN THOMAS  
Vice President



FREDRICK FOLSCHÉ  
Treasurer

BEVERLY KOEHLER



NORA ANN RICKLEFS  
Student Council





DARLENE ANSLINGER



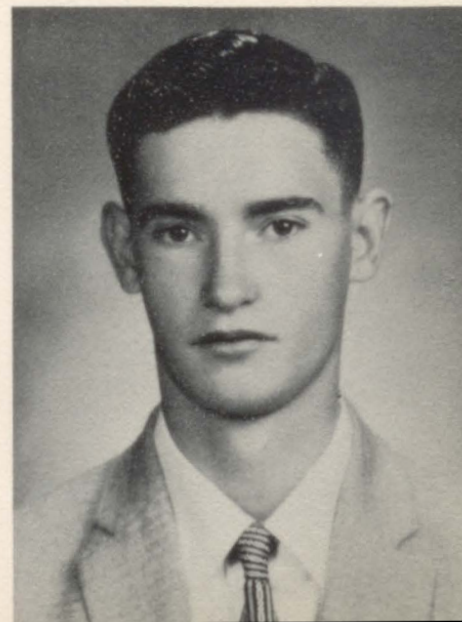
WILLIAM EMORY



RONALD HANLAN

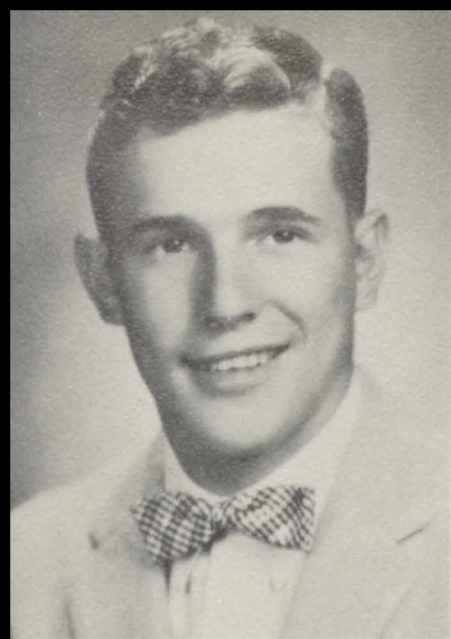


NANCY THORNTON



FRED CLARY

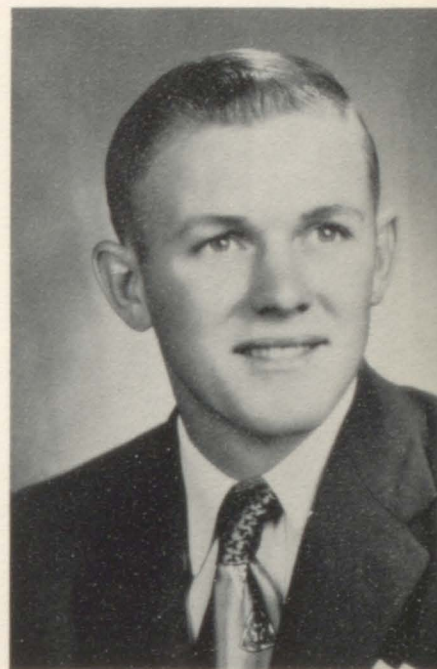




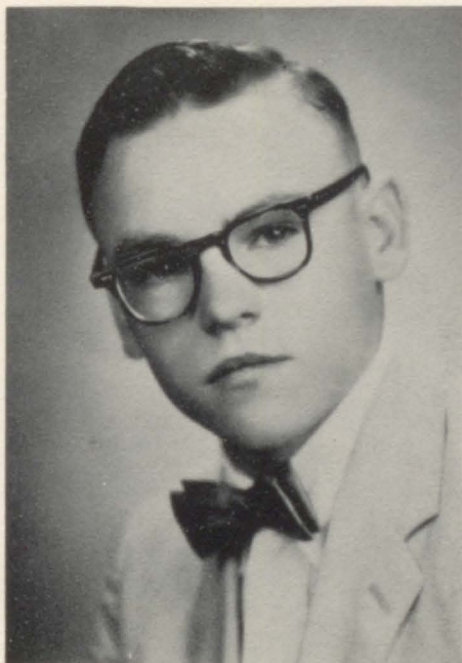
LARRY ROBERTON



NANCY WEBER



DONALD KING



LAWRENCE SHARP



PATSY LONG

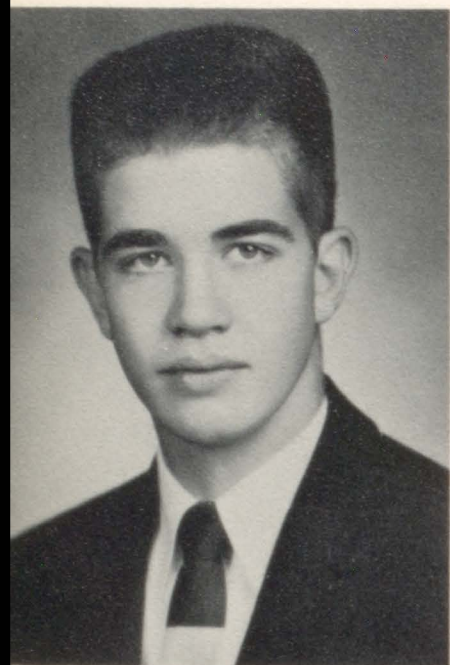




KATHLEEN FORD



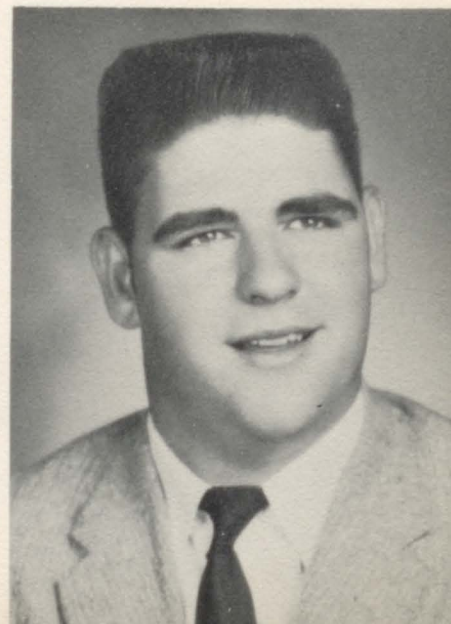
DALLAS MARTIN



MAX GINTER



JOANN KELLER

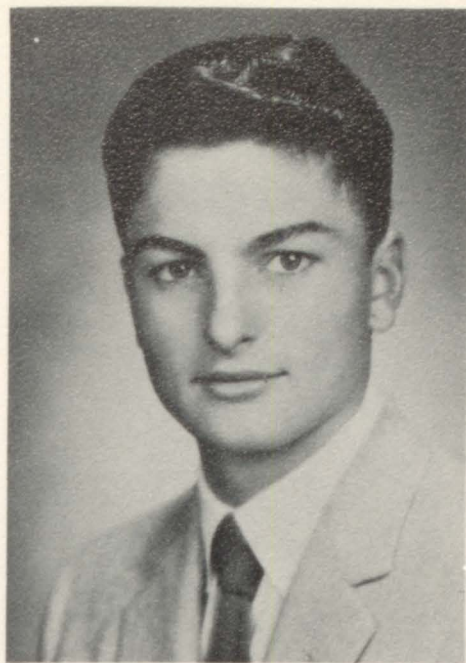


WILLIAM OYERLY





DORIS KIGER

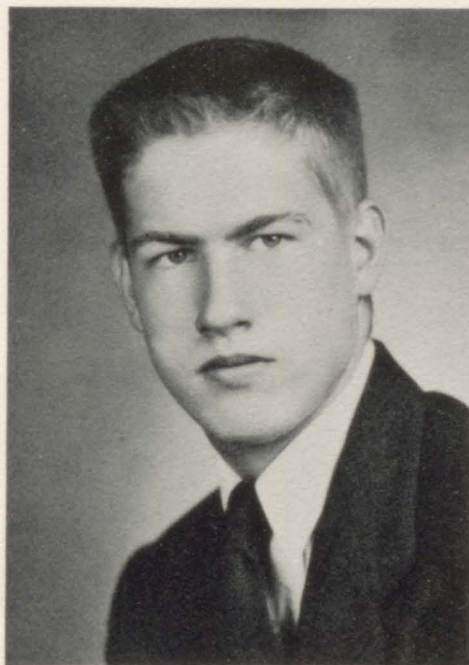


LARRY ABBETT



PATRICIA WILLIAMSON

WILLIAM PROHASKA



BARBARA SMITH





**JOSEPH HENRY GRONNIGER**  
 Football . . . . . 2,3,4  
 Track . . . . . 2,3,4  
 Basketball . . . . . 2,3  
 Science Club . . . . . 3,4  
 Vice Pres. of Science Club . . . . . 4  
 Library Club . . . . . 4  
 T-Club . . . . . 3,4  
 Class President . . . . . 4  
 Class Secretary . . . . . 2  
 Student Council . . . . . 4  
 N. H. S. . . . . 4  
 Annual Staff . . . . . 4  
 Ambition . . . . . Research Scientist

**PATRICIA SUE WILLIAMSON**  
 Pep Club . . . . . 1,2,3,4  
 Sextette . . . . . 1,3,4  
 Girls' Glee Club . . . . . 1,2,4  
 Mixed Chorus . . . . . 1,2,3  
 Band . . . . . 1,2,3,4  
 Clarinet Quartet . . . . . 1,2,3  
 Pep Band . . . . . 1,2,3,4  
 Dance Band . . . . . 3,4  
 Student Council . . . . . 2,4  
 Library Club . . . . . 4  
 Reporter of Library Club . . . . . 4  
 Spanish Club . . . . . 3,4  
 President of Spanish Club . . . . . 3  
 National Honor Society . . . . . 3,4  
 Annual Staff . . . . . 4  
 Co-Editor of Trojan Trumpet . . . . . 4  
 Jr. Play . . . . . 3  
 Spelling Representative . . . . . 1  
 Ambition . . . . . College

**NORA ANN RICKLEFS**  
 Pep Club . . . . . 1,2,3,4  
 Girls' Glee Club . . . . . 1,2,3,4  
 Mixed Chorus . . . . . 1,2,3  
 Band . . . . . 1,2,3,4  
 Pep Band . . . . . 2,3,4  
 Girls' Sextette . . . . . 4  
 Dance Band . . . . . 3,4  
 Secretary of Band . . . . . 3  
 Brass Sextette . . . . . 3  
 Jr. Play . . . . . 3  
 Student Council . . . . . 4  
 Secretary of Student Council . . . . . 4  
 Cheerleader . . . . . 4  
 Homecoming Attendant . . . . . 4  
 Barnwarming Attendant . . . . . 4  
 Trojan Trumpet Staff . . . . . 4  
 Secretary of Pep Club . . . . . 4  
 Secretary-Treasurer of Band . . . . . 4  
 Ambition . . . . . Air Line Hostess

**KATHLEEN ANN FORD**  
 Glee Club . . . . . 2,4  
 Mixed Chorus . . . . . 2  
 Pep Club . . . . . 2,3,4  
 Pep Club Vice President . . . . . 4  
 Cheerleader . . . . . 2,4  
 Barnwarming Attendant . . . . . 2  
 Homecoming Attendant . . . . . 4  
 Trojan Trumpet Staff . . . . . 4  
 Annual Staff . . . . . 4  
 Attended MSSA . . . . . 1  
 Ambition . . . . . Nurse

**WILLIAM PROHASKA**  
 Band . . . . . 1  
 FFA . . . . . 1,2  
 Basketball . . . . . 2,3,4  
 Football . . . . . 2,3,4  
 Track . . . . . 2,3,4  
 T-Club . . . . . 3,4  
 Pep Club . . . . . 4  
 Ambition . . . . . College

**FRED ALLEN CLARY**  
 Football . . . . . 2,3,4  
 Track . . . . . 2  
 FFA . . . . . 1,2  
 Ambition . . . . . Mechanic

**JOYCE JOANN KELLER**  
 Glee Club . . . . . 1,2  
 Pep Club . . . . . 2,3,4  
 Pep Club Reporter . . . . . 4  
 Spanish Club . . . . . 4  
 Ambition . . . . . Beautician

**LEONA PAULINE MILLER**  
 Glee Club . . . . . 1,2,4  
 Mixed Chorus . . . . . 1,2  
 Jr. Play . . . . . 3  
 Spanish Club . . . . . 3,4  
 Vice President of Class . . . . . 3  
 Secretary of Class . . . . . 4  
 Pep Club . . . . . 4  
 Pep Club President . . . . . 4  
 Student Council . . . . . 4  
 Trojan Trumpet Staff . . . . . 4  
 Annual Staff . . . . . 4  
 Sextette . . . . . 4  
 N. H. S. . . . . 4  
 Ambition . . . . . Nurse

**PATSY RUTH LONG**  
 Band . . . . . 1,2,4  
 Girls' Glee Club . . . . . 1,2,3,4  
 Mixed Chorus . . . . . 1,2  
 Sextette . . . . . 1,4  
 Pep Club . . . . . 1,2,4  
 Student Council . . . . . 1,3  
 Pep Band . . . . . 1,2,4  
 FFA Sweetheart . . . . . 1  
 Class President . . . . . 1  
 Spelling Representative . . . . . 1,2,3  
 N. H. S. . . . . 3,4  
 Secretary of N. H. S. . . . . 3  
 Treasurer of N. H. S. . . . . 4  
 Spanish Club . . . . . 3,4  
 Treasurer of Spanish Club . . . . . 4  
 Dance Band . . . . . 4  
 Girls' State . . . . . 3  
 Big-Six Play . . . . . 3  
 Jr. Play . . . . . 3  
 Trojan Trumpet . . . . . 4  
 Editor of Annual . . . . . 4  
 Trio . . . . . 3  
 Ambition . . . . . College

**JOHN ALLEN THOMAS**  
 FFA . . . . . 1,2,3,4  
 Secretary of FFA . . . . . 4  
 Vice-President . . . . . 4  
 Football . . . . . 2,4  
 Basketball . . . . . 2,3,4  
 Track . . . . . 2,3,4  
 Student Council . . . . . 1  
 Vice President of Class . . . . . 2  
 T-Club . . . . . 3,4  
 Boys' State . . . . . 3  
 Junior Play . . . . . 3  
 Big-Six Play . . . . . 3,4  
 T-Club Treasurer . . . . . 4  
 Class Vice-President . . . . . 4  
 Ambition . . . . . Farmer

**RONALD LEE HANLAN**  
 Football . . . . . 1,2,3,4  
 Basketball . . . . . 1,2,3  
 T-Club . . . . . 1,2,3,4  
 Track . . . . . 1,2,3,4  
 Co-Captain Football . . . . . 3,4  
 Track Captain . . . . . 3  
 T-Club President . . . . . 3,4  
 Student Council . . . . . 3,4  
 Ambition . . . . . Coach

**DONALD WOODROW KING**  
 Track . . . . . 2  
 Basketball . . . . . 2  
 Track . . . . . 2  
 FFA . . . . . 1,2,3,4  
 Treasurer of FFA . . . . . 3  
 Football . . . . . 2,3,4  
 Ambition . . . . . Farmer

**LAWRENCE SHARP**  
 FFA . . . . . 1,2,3,4  
 Football . . . . . 2,3,4  
 T-Club . . . . . 4  
 Ambition . . . . . Farmer

**DALLAS EUGENE MARTIN**  
 FFA . . . . . 1,2,3,4  
 Mixed Chorus . . . . . 1,2  
 Boys' Glee Club . . . . . 1,2  
 Track . . . . . 2,3,4  
 Ambition . . . . . Construction Foreman

**JAMES LEE WINDER**  
 Band . . . . . 1,2,3,4  
 Mixed Chorus . . . . . 1,2,3  
 Boys' Glee Club . . . . . 1,2,3  
 FFA . . . . . 1,2,3  
 Track . . . . . 2,3,4  
 Football . . . . . 2,3,4  
 T-Club . . . . . 2,3,4  
 Student Council . . . . . 4  
 T-Club Sergeant at Arms . . . . . 3  
 Basketball . . . . . 2,3  
 President of Student Council . . . . . 4  
 Pep Club . . . . . 4  
 Paris . . . . . 4  
 Ambition . . . . . College

**NANCY BELL WEBER**  
 Pep Club . . . . . 1,2,3,4  
 Sextette . . . . . 1,3,4  
 Band . . . . . 1,2,3,4  
 Girls' Glee Club . . . . . 1,2,4  
 Mixed Chorus . . . . . 1,2,3  
 Pep Band . . . . . 1,2,3,4  
 Mixed Sextette . . . . . 3  
 Jr. Play . . . . . 3  
 Clarinet Quartet . . . . . 1,2,3  
 Secretary of Class . . . . . 3  
 Secretary-Treasurer of Band . . . . . 3  
 Secretary of Spanish Club . . . . . 3  
 Dance Band . . . . . 4  
 National Honor Society . . . . . 3,4  
 Trojan Trumpet Staff . . . . . 4  
 Annual Staff . . . . . 4  
 President of Band . . . . . 4  
 Student Council . . . . . 4  
 President of Spanish Club . . . . . 4  
 Helen of Troy . . . . . 4  
 Reporter of N. H. S. . . . . 4  
 Ambition . . . . . Home Ec. Teacher

**WILLIAM ALLEN EMORY**  
 Football . . . . . 2,3,4  
 Basketball . . . . . 2,3,4  
 Track . . . . . 2,3,4  
 T-Club . . . . . 3,4  
 Science Club . . . . . 3,4  
 Secretary of Science Club . . . . . 4  
 President of Class . . . . . 2  
 Student Council . . . . . 2  
 Band . . . . . 1,2,3,4  
 Trumpet Trio . . . . . 3,4  
 Brass Sextette . . . . . 3  
 Ambition . . . . . Coach

**WILLIAM DALE OYERLY**  
 FFA . . . . . 1,2,3,4  
 Glee Club . . . . . 1,2  
 Mixed Chorus . . . . . 1,2  
 Football . . . . . 1,2,3,4  
 Track . . . . . 2,3  
 Jr. Play . . . . . 3  
 T-Club . . . . . 3,4  
 FFA Sentinel . . . . . 3  
 Science Club . . . . . 4  
 Basketball Manager . . . . . 4  
 Ambition . . . . . Farmer

**LARRY DEAN ABBETT**  
 FFA . . . . . 2,3,4  
 Football . . . . . 2,3,4  
 Track . . . . . 2,3,4  
 Jr. Play . . . . . 3  
 Mixed Chorus . . . . . 2,3  
 Attended Leona . . . . . 1  
 Ambition . . . . . Farmer

**NANCY LEIGH THORNTON**  
 Glee Club . . . . . 1,2  
 Library Club . . . . . 4  
 Spanish Club . . . . . 4  
 Ambition . . . . . Librarian

**DARLENE JANETTE ANSLINGER**  
 Glee Club . . . . . 1,2  
 Mixed Chorus . . . . . 1  
 Band . . . . . 1,2,3  
 Ambition . . . . . Secretary

**MAX MILTON GINTER**  
 Football . . . . . 3,4  
 Basketball . . . . . 3,4  
 Track . . . . . 4  
 Track Manager . . . . . 3  
 Science Club . . . . . 3,4  
 Science Club President . . . . . 4  
 T-Club . . . . . 3,4  
 T-Club Secretary . . . . . 4  
 National Honor Society . . . . . 4  
 Co-Editor School Paper . . . . . 4  
 Annual Staff . . . . . 4  
 Attended Fairview . . . . . 1,2  
 Ambition . . . . . College

**FREDRICK HARRY FOLSCHE**  
 Band . . . . . 1,2,3,4  
 Glee Club . . . . . 1,3,4  
 FFA . . . . . 1,2,3,4  
 Basketball . . . . . 2,3,4  
 Track . . . . . 2,3  
 National Honor Society . . . . . 3,4  
 Boys' State . . . . . 3  
 FFA President . . . . . 4  
 FFA Vice President . . . . . 3  
 Class President . . . . . 3  
 Class Secretary . . . . . 2,4  
 Annual Staff . . . . . 4  
 Trumpet Trio . . . . . 3  
 Brass Sextette . . . . . 3  
 N. H. S. Reporter . . . . . 3  
 Library Club President . . . . . 4  
 Student Council . . . . . 3,4  
 Jr. Play . . . . . 3  
 Big-Six Play . . . . . 3  
 Ambition . . . . . Farmer

**LARRY LEE ROBERTON**  
 FFA . . . . . 1,2,3,4  
 Glee Club . . . . . 1,2  
 Football . . . . . 2,3,4  
 Basketball . . . . . 2,3,4  
 T-Club . . . . . 2,3,4  
 Vice President of T-Club . . . . . 4  
 FFA Reporter . . . . . 4  
 Track . . . . . 2,3,4  
 T-Club Treasurer . . . . . 3  
 Student Council . . . . . 3  
 Co-Captain Football . . . . . 4  
 Ambition . . . . . Farmer

**DORIS DARLENE KIGER**  
 Girls' Glee Club . . . . . 1  
 Pep Club . . . . . 3,4  
 Spanish Club . . . . . 4  
 Secretary of Spanish Club . . . . . 4  
 Annual Staff . . . . . 4  
 Trojan Trumpet Staff . . . . . 4  
 Attended Atchison . . . . . 2  
 Ambition . . . . . Phys. Ed. Teacher

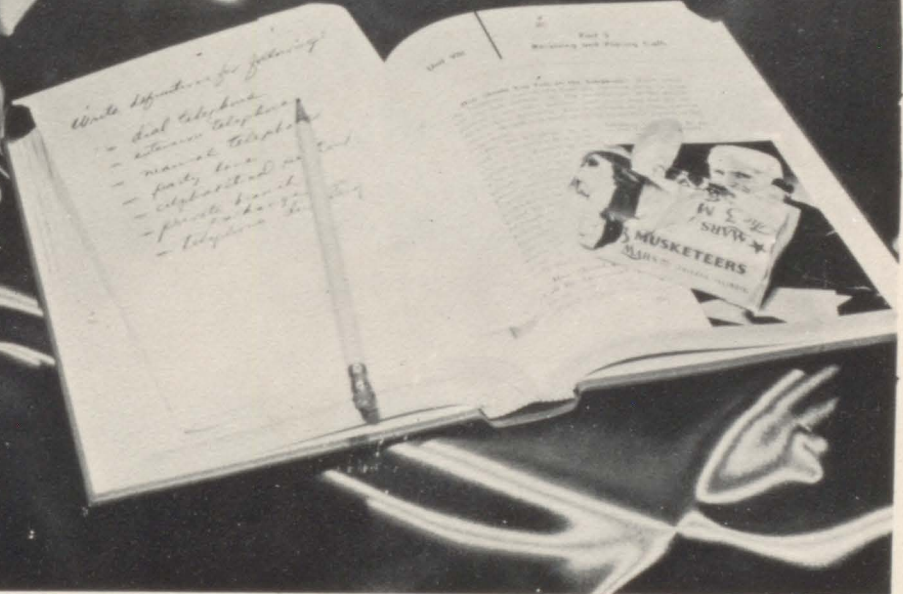
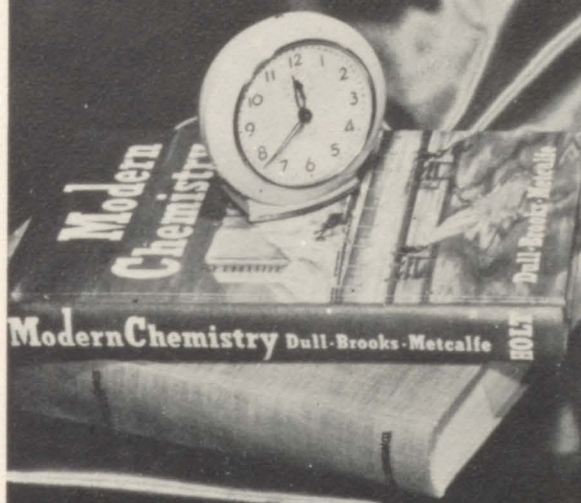
**ANNETTE HOWLAND**  
 Pep Club . . . . . 1,2  
 Glee Club . . . . . 1,2  
 Class Reporter . . . . . 4  
 Annual Staff . . . . . 4  
 Business Manager of Annual . . . . . 4  
 Ambition . . . . . Housewife

**BEVERLY JEAN KOEHLER**  
 Glee Club . . . . . 1,2  
 Pep Club . . . . . 3  
 FFA Sweetheart . . . . . 3  
 Halloween Queen . . . . . 3  
 Ambition . . . . . Secretary

**BARBARA ANN SMITH**  
 Secretary of Class . . . . .  
 Pep Club . . . . . 1,2  
 Glee Club . . . . . 1,2  
 Ambition . . . . . Secretary



*Undergrads*





J  
U  
N  
I  
O  
R  
S



Paul Lehman  
President



Mary Ashworth  
Vice President



Larry Simpson  
Secretary-Treasurer



John Weber  
Reporter



Glenda Burkhardt  
Student Council



Pauline Studer



Pat Smith



Ruth Ruhnke



Larry Sandy



Henry Keller



Mary Smith



Joy Thornton



Norma Ruhnke



Richard Norris



Allen Brownlee



Nancy Ruhnke



Ina Whestine



Nona Thornton



Stephen Foster



Donald Mullins

Harold Stevens



Betty Abbett



Sue Gilmore



Katherine Stahl



Floyd Mooney



David Lichliter





MICKEY ROCKEY  
President



RONNIE RUHNKE  
Secretary-Treasurer



BERNARD KOEHLER  
Reporter



KAY AINLAY  
Student Council



MARY WINKEL



SANDRA LOSSON



GARY WINDER



IRENE LEHMAN



DONALD WYKERT



IDA RAE HOWLAND



SHARON THORNTON



JACK THORNTON



GERALDINE CLARY



HAROLD WHITTEN



DONNA THORNTON



BETTY CLARY



BILLY FOSTER



SHARON DAVIES



JERRY MURPHY



MARGARET SHARP



JOHN MARRIOTT



LEONA HUTTON



GERALD MYERS



SHIRLEY KING



RAYMOND PROHASKA

S  
O  
P  
H  
O  
M  
O  
R  
E  
S



F  
R  
E  
S  
H  
M  
E  
N



Larry Smith



Chloe Young  
Student Council



Bill Ashworth  
Reporter



Kathy Studer  
Secretary-Treasurer



Steve Mitchell  
Vice President



Mike Williamson  
President



Richard Wright



Rosalee Wright



Doris Thornton



Ray Thompson



Connie Ruhnke



Larry Wykert



Dale Robertson



Sharon Akles



Larry Schoenfelder



Jean Tracy



Linda Ruhnke



DeWayne Reder



Garland Blanton



Susie Lewis



Mary Geisendorf



Melvin Ettinger



Dixie Wykert



Denny Smith



August Groninger



Marilyn Fitzgerald



Rodney Weidmer



Barbara Sharp



Patty Sharp



Gerald Kentzler

Roger Ruhnke

Linda Meier

Dale Bembrick

Garry Sandy





# Activities





# Homecoming



ATTENDANT  
Nora Ricklefs

QUEEN  
Kathy Studer

ATTENDANT  
Kitty Ford

LARRY SANDY  
NORA RICKLEFS



KATHY STUDER  
RONNIE HANLAN

KATHY



KATE.



MAX

QUEEN KATHY

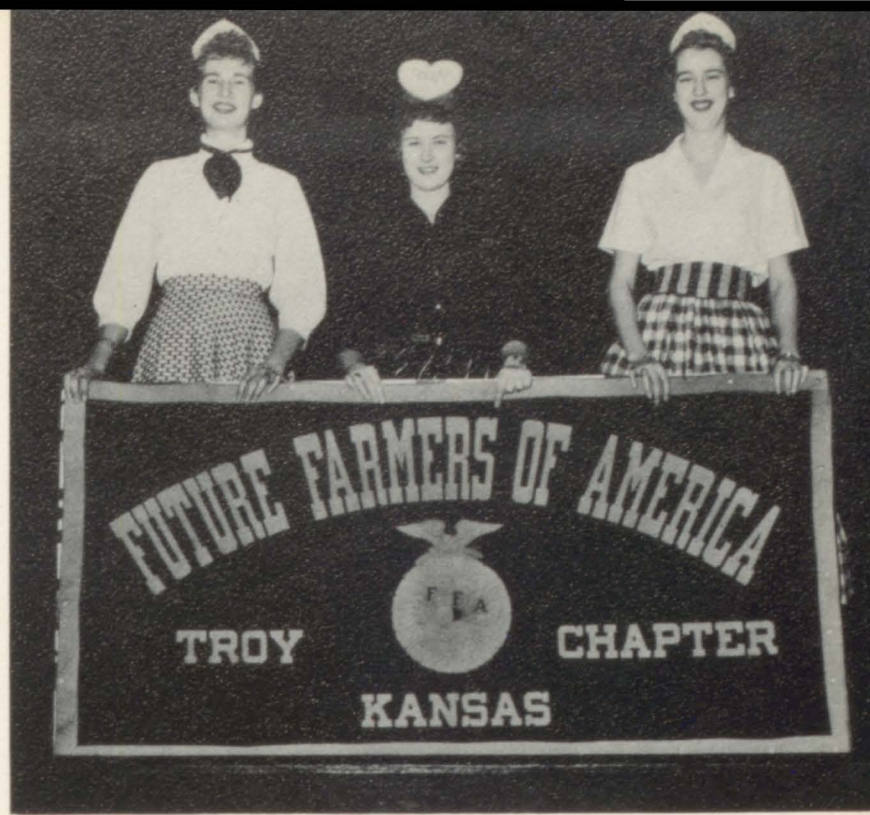






Nora, Pauline, and Sue

CHAPTER SWEETHEARTS



ATTENDANT  
Nora Ricklefs

SWEETHEART  
Pauline Studer

ATTENDANT  
Sue Gilmore



HELEN OF TROY  
and  
PARIS

Nancy Weber

Jim Winder

Jim and Nancy







**T.H.S. Band**

- FRONT ROW:** Nancy Weber, Joyce Bennett, Patty Williamson, Charlotte Burkhart, Bobby Williamson, Betty Abbett, Ronnie Ruhnke, and John Weber.
- SECOND ROW:** Marleen Studer, Patty Moser, Bill Emory, James Winder, Nancy Ruhnke, Fredrick Folsche, Patsy Long, Sue Gilmore.
- BACK ROW:** Janice Barnhill, Linda Ruhnke, Linda Mier, DeWayne Reder, Glenda Burkhart, Mike Williamson, Kathy Studer, Steve Mitchell, Nora Ricklefs.
- DIRECTOR:** Mr. Wilson.



**TRUMPET TRIO**

- Fred Folsche  
Jim Winder  
Bill Emory

**DANCE BAND**

- BACK ROW:**  
Bill Emory  
Jim Winder  
Nancy Ruhnke  
Fredrick Folsche

- SECOND ROW:**  
Kathy Studer  
Steve Mitchell  
Nora Ricklefs  
Mike Williamson  
Glenda Burkhart

- FRONT ROW:**  
Ronnie Ruhnke  
Sue Gilmore  
John Weber  
Patsy Long  
Patty Williamson  
Nancy Weber





# Majorettes



TWIRLER  
Kathy Studer

DRUM MAJORETTE  
Glenda Burkhart

TWIRLER  
Nora Ricklefs





**SEXTET:** (Seated) Nancy Weber.  
 (Standing) Patsy Long, Mary Ashworth, Patty Williamson, Nora Ricklefs, Leona Miller, and Kay Ainlay.

### Girls' Glee Club

- BACK ROW:** Irene Lehman, Betty Abbett, Ina Whetstine, Sharon Davies, Sue Gilmore, Nora Ricklefs, Patty Williamson, Nancy Ruhnke, Kitty Ford and Joy Thornton.
- FRONT ROW:** Patsy Long, Mary Ashworth, Sandra Losson, Nona Thornton, Kay Ainley, Leona Miller, and Sharon Thornton.
- PIANIST:** Nancy Weber.
- DIRECTOR:** Mr. Wilson.





**KNEELING:**  
 Linda Ruhnke  
 Connie Ruhnke  
 Joy Thornton  
 Patty Sharp  
 Geraldine Clary  
 Susie Lewis  
 Donna Thornton  
 Sharon Davies  
 Doris Thornton  
 Linda Meir  
 Doris Kiger  
 Dixie Wykert  
 Sharon Thornton  
 Jean Tracy  
 Nora Ricklefs  
 Mary Ashworth  
 Kay Ainley  
 Kitty Ford  
 Chloe Young  
 Shirley King  
 Sharon Akles  
 Betty Abbett  
 Ida Howland



**STANDING ROWS:**  
 Mrs. Valker, Sponsor  
 Rosalee Wright  
 Kathy Studer  
 Larry Abbett  
 Richard Norris  
 Bill Prohaska  
 Jim Winder  
 Fredrick Folsche  
 Henry Keller  
 Sue Gilmore  
 Glenda Burkhart  
 Patsy Long  
 Leona Miller

Norma Ruhnke  
 Pauline Studer  
 Nona Thornton  
 Sandra Losson  
 Leona Hutton  
 Patty Williamson  
 Nancy Weber  
 Nancy Ruhnke  
 Irene Lehman  
 Ina Whetstine  
 JoAnn Keller  
 Kathy Stahl

## Pep Club

## "A" Team Cheerleaders

KAY AINLAY



NORA RICKLEFS

MARY ASHWORTH

KITTY FORD



# Trojan Trumpet Staff



**SEATED:** Max Ginter and Patty Williamson, Co-Editors.  
**STANDING:** Kitty Ford, Calendar Editor; Doris Kiger, Gossip Editor; Mrs. Warren, Faculty Advisor; Nancy Weber Music Editor; Jim Winder and Bill Emory, Sport Editors; Mr. Talbot, Faculty Advisor; Leona Miller, Business Manager; Nora Ricklefs, Art Editor; Patsy Long, Business Manager.

## Science Club



### Science Club Members

**FIRST ROW:** John Weber, Treas.; Bill Emory, Sec.; Max Ginter, Pres.; Joe Gronniger, V. Pres.; Larry Sandy, Librarian.  
**SECOND ROW:** Sue Gilmore, Glenda Burkhart, Larry Simpson, Bill Oyerly and Mr. Gampper, Sponsor.

## Library Club

### Library Club Members

**FRONT ROW:** Bill Foster, Ruth Ruhnke, Donna Thornton, Nancy Thornton, and Jean Tracy.  
**SECOND ROW:** Joseph Gronniger, Patty Williamson, Reporter; Fred Folsche, Pres; Glenda Burkhart, Sec.-Treas; Susie Lewis, and Mrs. Oliver, Sponsor.





# Student Council



**FRONT ROW:** Mr. Larson, Sponsor; Nora Ann Ricklets, Sec.-Treas.; Mickey Rocky, Sergeant-at-Arms; Jim Winder, Pres.; Paul Lehman, V. Pres.; Mr. Ginter, Principal; Mrs. Goss, Sponsor.

**SECOND ROW:** Chloe Young, Kay Ainlay, Nancy Weber, Patty Williamson, Glenda Burkhart, Leona Miller.

**THIRD ROW:** Mike Williamson, John Weber, Fred Folsche and Joe Gronniger.

# National Honor Society

NATIONAL HONOR SOCIETY MEMBERS



**FIRST ROW:** Patty Williamson, Sec.; Nancy Weber, Reporter; Miss Rhudy, Sponsor; Pat Long, Treas.;

**BACK ROW:** Fredrick Folsche, Pres.; John Thomas, V. Pres.

# Spanish Club



**SPANISH CLUB MEMBERS**

**SITTING:** Patsy Long, Treas.; Doris Kiger, Sec. Nancy Weber Pres.; Glenda Burkhart; Mrs. Warren, Sponsor.

**STANDING:** Nancy Thornton, Katherine Stahl, Patty Williamson, JoAnn Keller, and Leona Miller.



# Little Acorns

Millicent Collins . . . . . Glenda Burkhart  
 Lorna . . . . . Mary Jane Ashworth  
 Pandora . . . . . Nancy Ruhnke  
 Dennis Collins . . . . . Larry Sandy  
 Dina Wentworth . . . . . Betty Abbett  
 Mrs. Judith Wentworth . . . . . Sue Gilmore  
 Sidney Landfield . . . . . John Weber  
 Charles Collins . . . . . Paul Lehman

Student Directors . . . . . Ina Whetstine  
 Joy Thornton  
 Stage Prop Managers . . . . . Allen Brownlee  
 Larry Simpson  
 Make-up Artist . . . . . Norma Del Huhnke  
 Charge Of Curtain, Sound Effects . . . . .  
 Steve Foster

Directors . . . . . Mrs. Goss and Mr. Gampper

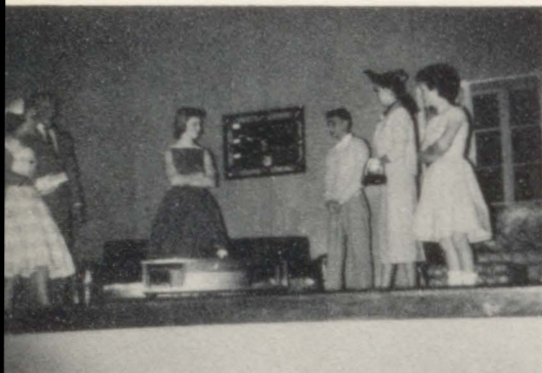


John Weber And Glenda Burkhart Caught In The Act!!!!



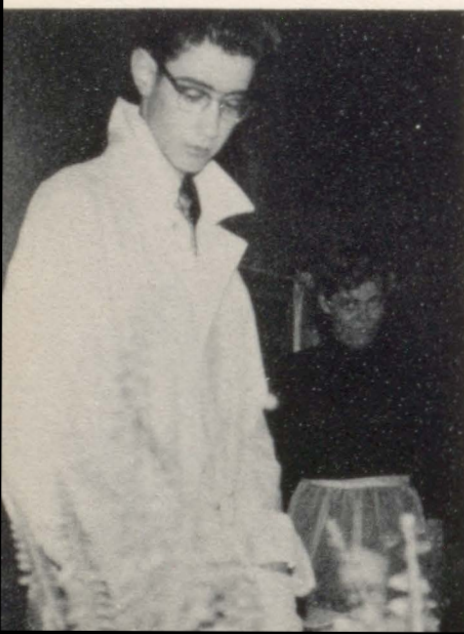
SUE GILMORE PAUL LEHMAN

# J U N I O R P L A Y



A Living Room Scene

SPONSORS: Mr. Gampper and Mrs. Goss, Glenda Burkhart, Mary Ashworth, Joy Thornton, Ina Whetstine, Norma Del Ruhnke, Steve Foster, Nancy Ruhnke, Paul Lehman, Larry Sandy, Sue Gilmore, Betty Abbett, and John Weber.



JOHN WEBER

NANCY RUHNKE





O  
N  
E  
  
A  
C  
T  
  
P  
L  
A  
Y



SITTING: Glenda Burkhart, Mary Ashworth, John Thomas, Steve Mitchell.  
STANDING: Director; Mrs. Warren, Kathy Studer, Nancy Ruhnke, Sue Gilmore, and Larry Sandy.

"T  
H  
E  
  
B  
E  
S  
T  
  
T  
H  
E  
R  
E  
  
I  
S"

Miss Hyslop, a graduate nurse . . . . . Nancy Ruhnke  
Miss Evans, a student nurse . . . . . Glenda Burkhart  
Mr. Brown, a patient . . . . . Steven Mitchell  
Tessie Brown, his daughter . . . . . Mary Jane Ashworth  
J.J. Petersham, a patient . . . . . John Thomas  
An Interne . . . . . Larry Sandy  
An Attendant . . . . . Steven Mitchell  
A Student Nurse . . . . . Kathy Studer  
An Operating Room Nurse . . . . . Sue Gilmore  
Student Director . . . . . Sue Gilmore  
Director . . . . . Ellen Warren  
Synopsis: Tessie Brown wants to get the "best there is" for her father in the hospital.

NANCY JOHN



NANCY AND STEVE



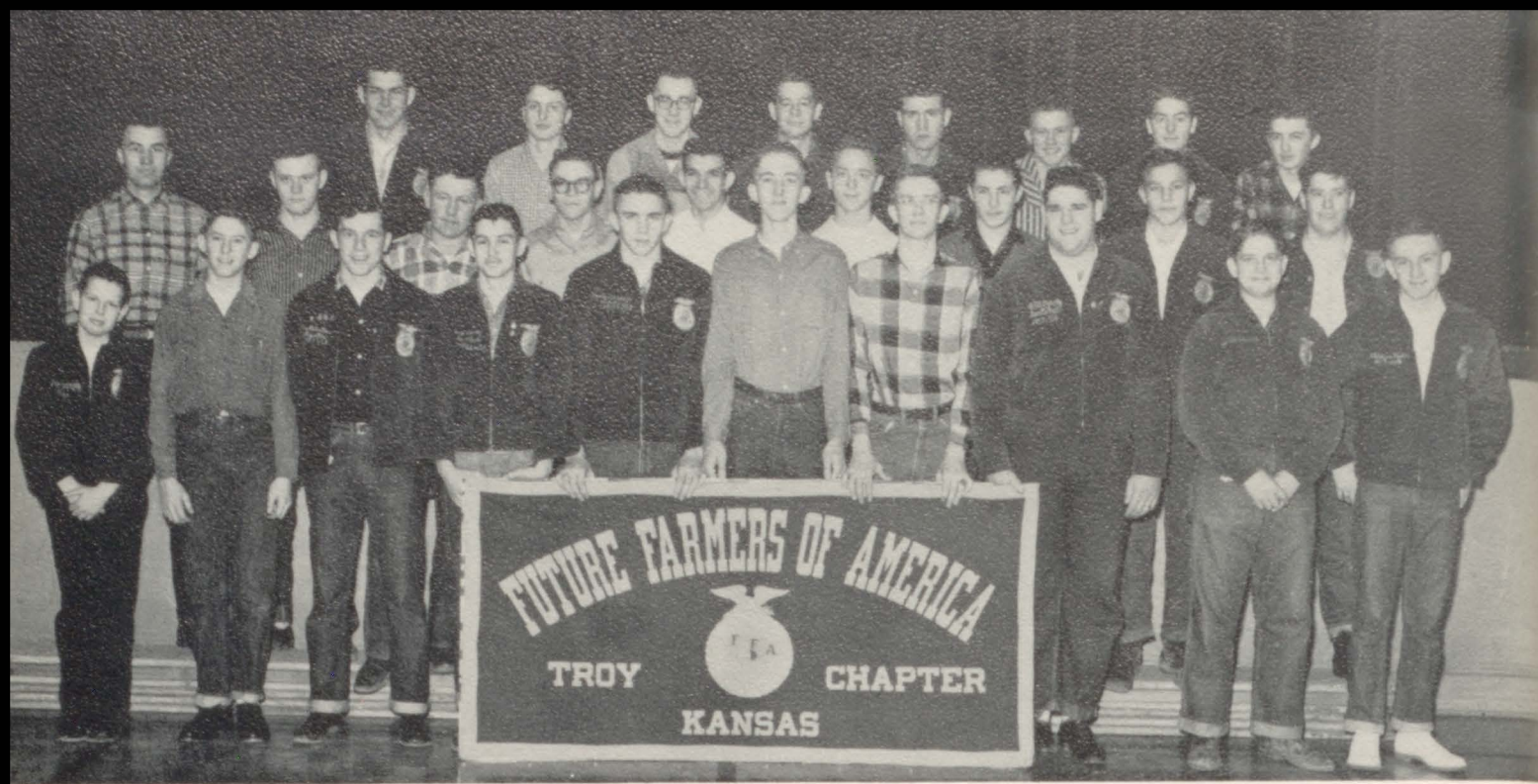
GLEND

MARY JANE

GLEND JOHN







BACK ROW: Roger Ruhnke, Larry Abbett, Dallas Martin, Allen Brownlee, Gerald Myers, Donnie King, Jerry Murphy, Ray Thompson.

SECOND ROW: Mr. Larson, Gerald Kentzler, Harold Whitten, Lawrence Sharp, Richard Norris, Larry Schoenfelder, Dale Robertson, Henry Keller, Donald Mullins.

FRONT ROW: Garry Sandy, Billy Foster, Larry Robertson, Larry Sandy, Paul Lehman, Fredrick Folsche, John Thomas, Bill Oyerly, Harold Stevens and DeWayne Reder.

DONNIE KING

ALLEN BROWNLEE

PAUL LEHMAN



RICHARD NORRIS



JERRY MURPHY

GERALD MYERS



HAROLD WHITTEN

D  
O  
N  
&  
N  
I  
E



D  
E  
W  
A  
Y  
N  
E  
R  
E  
D  
E  
R





*Sports*

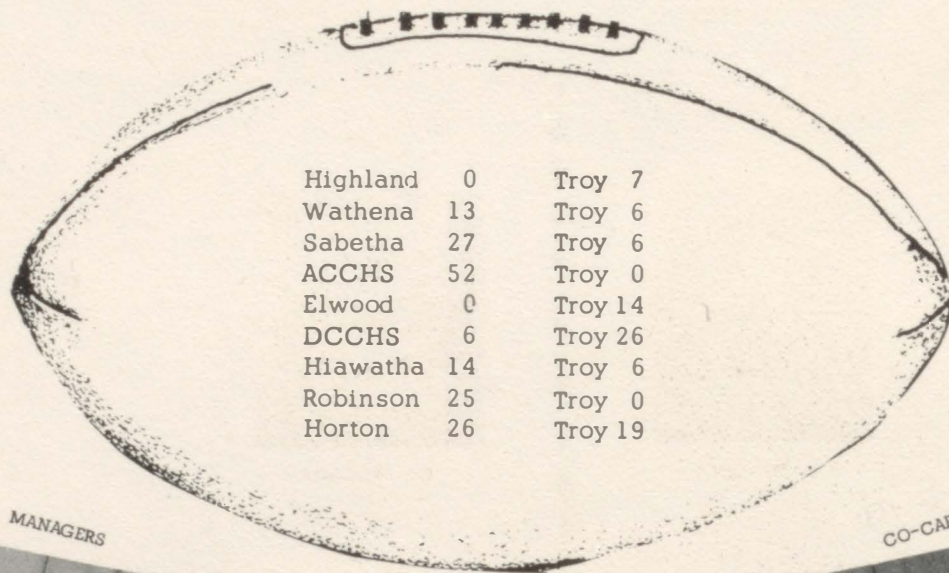






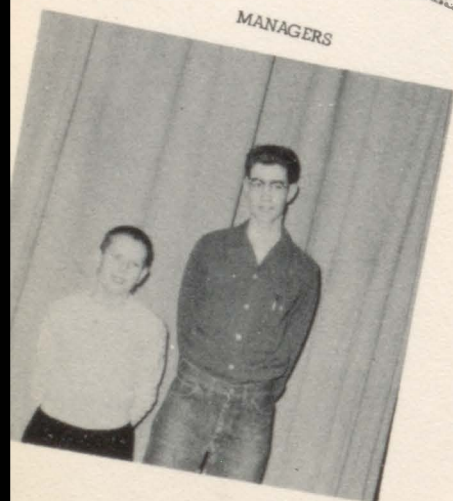
### Trojan Football Squad '57

LEFT TO RIGHT (Front Row) Ronnie Hanlan, Jim Winder, Larry Robertson, Paul Lehman, Bill Prohaska, Bill Oyerly, Ray Prohaska, Gary Winder, Bill Emory, Max Ginter.  
 (Second Row) Dave Lichliter, Alan Brownlee, Larry Sandy, Larry Abbett, John Thomas, Richard Norris, Don King, Mickey Rocky, Bernard Koehler, Larry Schoenfelder, Gerald Myers.  
 (Third Row) Henry Keller, Joe Gronniger, Steve Mitchell, Jack Thornton, Dale Robertson, Don Wykert, Larry Smith, Bill Ashworth, Dale Bembrick, Denny Smith.  
 (Fourth Row) Gus Gronniger, Steve Foster, Jerry Murphy.



Highland	0	Troy	7
Wathena	13	Troy	6
Sabetha	27	Troy	6
ACCHS	52	Troy	0
Elwood	0	Troy	14
DCCHS	6	Troy	26
Hiawatha	14	Troy	6
Robinson	25	Troy	0
Horton	26	Troy	19

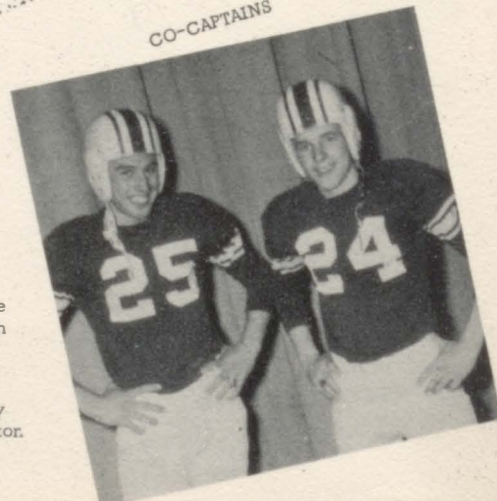
MANAGERS



John  
Weber

Garry  
Sandy

CO-CAPTAINS



Ronnie  
Hanlan

Larry  
Robertor.





LARRY SANDY  
Jr. QB  
1 yr. letterman



RONNIE HANLAN  
Sr. RHB  
4 yr. letterman



JIM WINDER  
Sr. FB  
2 yr. letterman



LARRY ROBERTON  
Sr. LHB  
2 yr. letterman



MAX GINTER  
Sr. RG  
2 yr. letterman



GARY WINDER  
Soph. C  
1 yr. letterman



BILL OYERLY  
Sr. Def LT  
2 yr. letterman



BILL EMORY  
Sr. LG  
2 yr. letterman



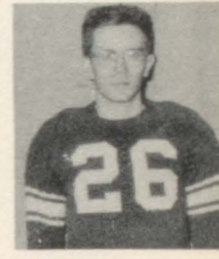
PAUL LEHMAN  
Jr. RE  
1 yr. letterman



BILL PROHASKA  
Sr. RT  
1 yr. letterman



RAY PROHASKA  
Soph LT  
1 yr. letterman



JOHN THOMAS  
Sr. LE  
1 yr. letterman

LARRY ABBETT  
Sr. Def HB  
1 yr. letterman



DALE ROBERTON  
Fresh. Def HB  
1 yr. letterman



DONNIE KING  
Sr. Punter  
2 yr. letterman



MICKEY ROCKEY  
Soph. Def HB  
1 yr. letterman

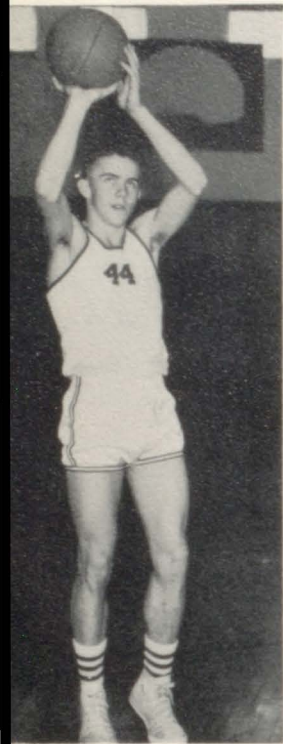






## Trojan Basketball Squad '57-'58

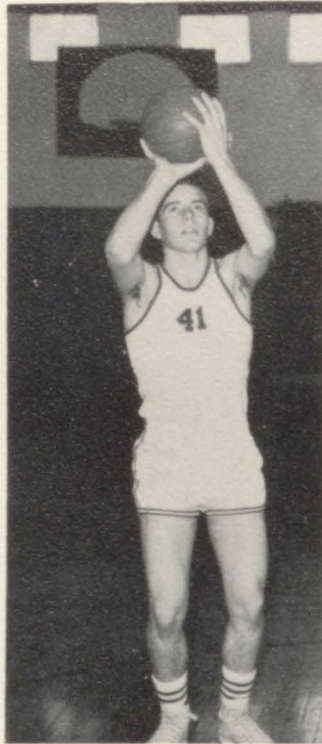
LEFT TO RIGHT: (Front Row) Garry Sandy, Steve Mitchell, Ronnie Ruhnke, Larry Smith, Mike Williamson, Bill Oyerly, Manager; Dale Bembrick, Larry Gardner, Gus Gronniger, Bill Ashworth. (Second Row) Coach Clark, Larry Sandy, Gary Winder, Max Ginter, John Thomas, Ray Prohaska, Bill Prohaska, John Weber, Paul Lehman, Bill Emory, Mickey Rockey, Assistant Coach Gampper.



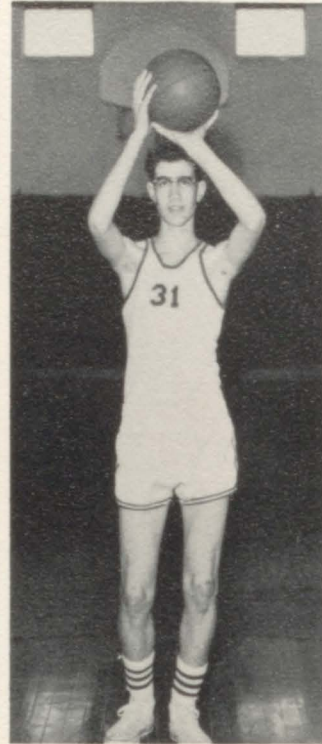
PAUL LEHMAN  
Jr. Forward



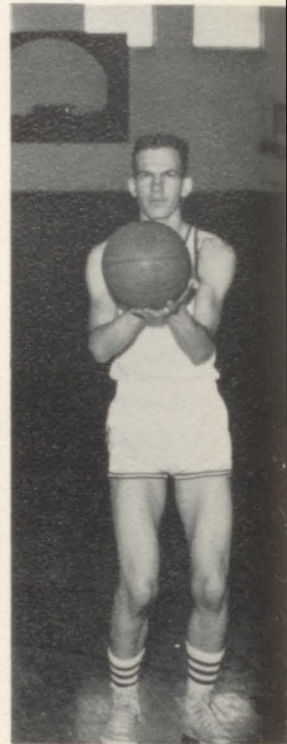
BILL PROHASKA  
Sr. Center



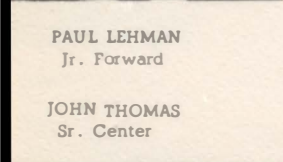
GARY WINDER  
Soph. Forward



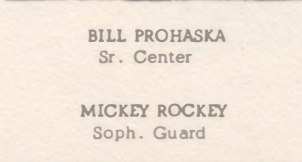
JOHN WEBER  
Jr. Forward



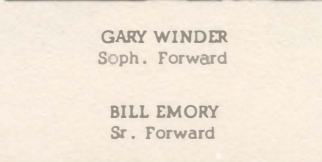
RAY PROHASKA  
Soph. Center



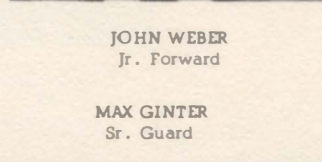
JOHN THOMAS  
Sr. Center



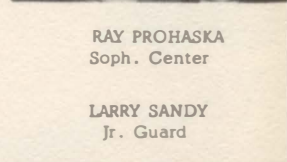
MICKEY ROCKEY  
Soph. Guard



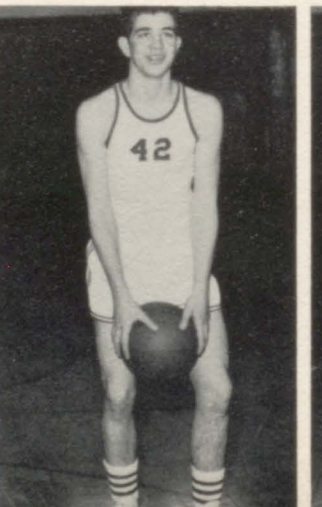
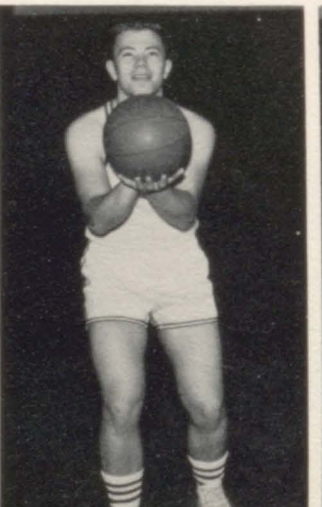
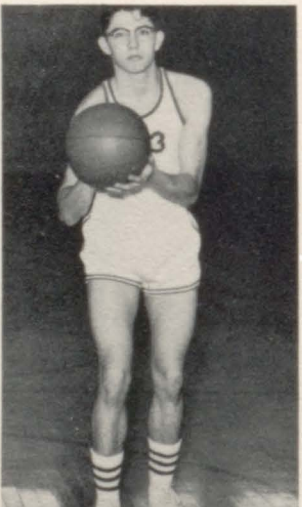
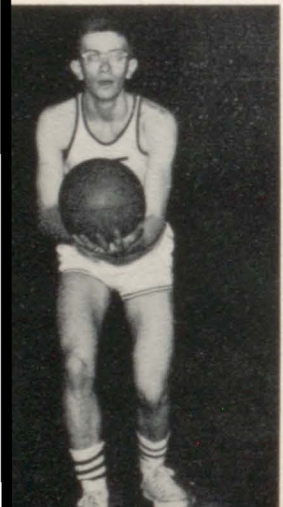
BILL EMORY  
Sr. Forward



MAX GINTER  
Sr. Guard



LARRY SANDY  
Jr. Guard





*Humor*







1. Hold it! 2. Smirky smile. 3. Little Johnnie. 4. Pigtails. 5. Hiawatha! 6 & 7. Changed, hasn't she? 8. Burn that thing! 9. Oops!! 10. Ye gads, what a mess! 11. Fill 'er up again! 12. Young Kathy. 13. Thornton sisters. 14. Dance band on TV. 15. Little John. 16. Emory shoots one. 17. "Let's Dance!" 18. Cool Studers. 19. Time John? 20. Nora and Kathy are crowned. 21. Studying hard?









Bill Emory



First Place  
Richard Norris & Mary Winkel  
"Pre-School Days"



Kitty Ford



Patty Williamson



Jim Winder



Annette Howland



Second Place  
Pauline Studer  
"Bathing Beauty"



Bill Prohaska



"Maxine" G.



Leona Miller



J  
o  
h  
n  
T  
&  
R  
o  
n  
n  
i  
e  
H



"Hun Bun" Howland



Third Place  
J. Keller & I. Whetstine  
"Close Pals"



Nancy W.  
and  
Leona W.



L  
a  
r  
r  
y  
R  
&  
F  
r  
e  
d  
C



# Autographs





*Autographs*



*Autographs*



# Autographs





