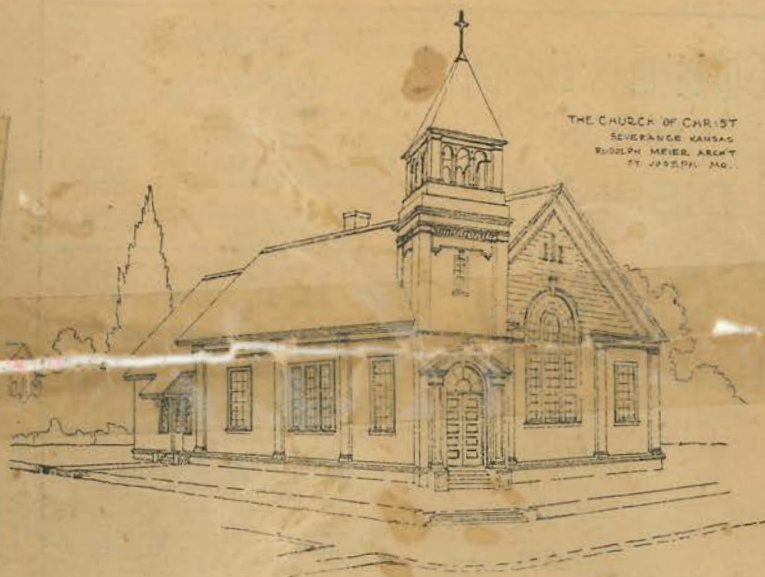


1915

Musical



Christian Church, Severance, Kansas



Little Inn Cafe

Best Place to buy your Xmas candies, nuts, fruits, decorations, dates, figs, etc.—Specialties, oysters, olives, celery, etc.

If our goods please you tell others; if not tell us.

With Obligations.

F. LEVANDOWSKI.

PROGRAMME



Part I

- Piano "Valse" Chopin Op. 64
Marion Kislingbury
Voice "To My Love" H. Alexander Matthews
Edna Binz

Part II

- Cello "Melody in F" Rubenstein . . . Popper
Cleo Bryan
Piano "Novelletten" Schumann
Marion Kislingbury
Voice "Song of the Lark" Robert Coverley
Edna Binz

Part III

- Cello "Longing for Thee"
Cleo Bryan
Piano "Meditation" Thaïs Messenet
Marion Kislingbury
Voice "Love Song" William E. Haesche
Edna Binz

Part IV

- Cello "Cavatina" from Faust Gounod
Cleo Bryan
Piano "Rondo Capriccioso" Mendelssohn
Marion Kislingbury
Voice "Love Has Wings" James H. Rogers
Edna Binz

We'll be open after the entertainment

FORD & WARD

SEVERANCE

KANSAS

For the Holiday Season
WE HAVE SOME CHOICE PRESENTS
White Beauty Hoosier Cabinets
And Christmas Rockers
Ed Heeney

Christmas Goods

NOW ON

DISPLAY

USEFUL GIFTS
FOR GROWN-UPS

Books Dolls

Toys

FOR LITTLE FOLKS

Geo. W. Springer

Severance, Kans

BARBER SHOP

Thanking you for patronage
in the past I respectfully solicit
the same courtesy in the future

Severance Barber Shop

CLARENCE LUX

Dr. L. M. Bennett

DENTIST

SEVERANCE, KANS

WM. WARD

Dealer in

Fresh and Salt Meats

Highest prices paid for hides
and tallow.

SEVERANCE, KANS

Laugh and Have a Good Time

BUT DON'T FORGET

THE OLD RELIABLE STORE

Lyons Cash Store

Severance

Kansas

SEVERANCE AUTO COMPANY

Dealers in Mitchel cars, gas, oil and auto supplies.

A. D. HALL, Mgr.

HARNESS

Harness, collars, robes, blankets, shoe-repairing—
Prompt Attention

SEVERANCE HARNESS SHOP

Irrespective of creed you will be at home at each service in
this church. Come! To those who would worship here we offer

A WELCOME

A splendid fellowship, a message from the Word of God. We
have the largest Bible School in Doniphan county, able and ef-
ficient teachers who are keenly alive to modern bible school

A large church membership made up of people consecrated
to the service.

Come Sunday and you will come again.

Stereopticon will be used at the evening service.

Subject—"If the Devil Were to Come to Severance, What
Then?"

Call On

GUS EBNER

for shoes. All styles, and sizes, in stock

SEVERANCE

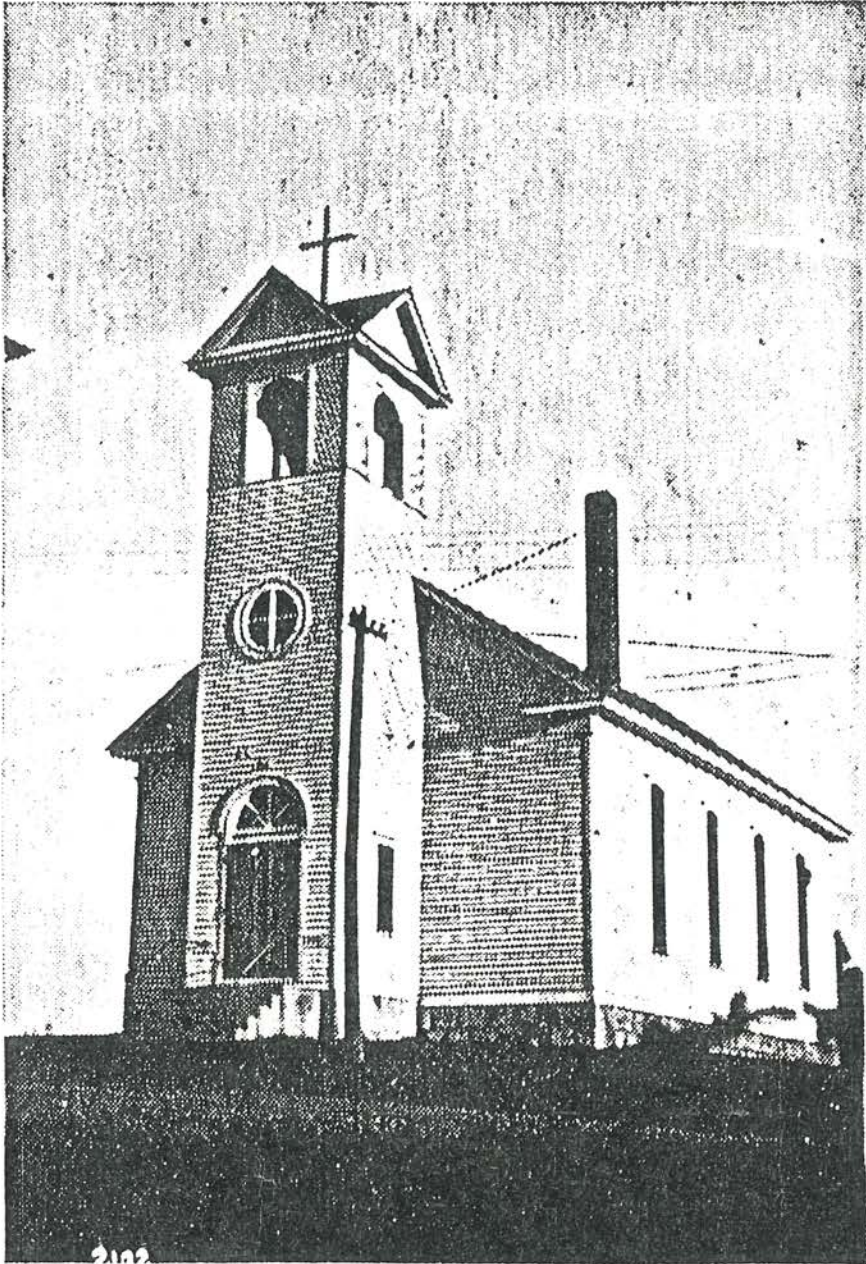
KANSAS

We do all Auto repairing. First class work guaran-
teed. Auto accessories, supplies, and storage.

SEVERANCE MOTOR COMPANY

J. L. WERTIN

1915



St. Vincent de Paul Church
Remodeled 1915-

Severance, Kansas

August 18, 1991

1. Church Key - of the Old Church
2. Bible
with paper - Executive committee
Doniphan County Sunday School Association
dated 7/21/17
3. Newspaper clipping
4. Newspaper - Central Christian Advocate
dated August 12, 1914
5. Discipline of the Methodist Episcopal Church
dated 1912
6. Methodist Episcopal Church
Official Record First Annual Session 1914
7. Newspaper - The Severance News
dated Aug 21, 1914

Coins that were listed in the newspaper article of the Severance News were not found in the box when opened

These below, were present @ the opening of this time capsule

Viola Burdette

Allen J. Burdette

Wilma Rush

Lloyd Fester - Troy

Helen Fester "

Don + Beverly Kentzler

~~Gene & Sally Rush~~

SCHOLARS ABSENT

SCHOLARS ON ROLL

Debra Clint - Brad Donohue
Jean Chase
Bernalda Martin
Josephine Gildersleeve
Mary Ann Thayer
Richard H. Ferguson
Phillip Chase
Norma Chase
Spis Lush Davis

Severance Church no longer stands

The history of the Severance Methodist Church dates back to the spring of 1872 when Rev. George W. Wood organized a handful of Methodists in the vicinity. The cornerstone of the first church was laid on April 11, 1874. The new structure was erected and completed, and dedicated on Sept. 24, 1874.

The congregation grew so rapidly in the next forty years that a larger church was needed. Mr. Herman Day, one of the most popular men in Severance, had left \$3500 in his will for church purposes and this started the building fund. The church was to cost \$10,000 but it ran over to \$13,000 and the hat was passed at the dedication service on January 10, 1915 and subscriptions were taken up to finish paying for the church.

It was a big day, the other churches suspended services so all the community for miles around could attend. There was a stained glass in the church in honor of Mr. Day along with Henry Laverentz, Watkins, Catherine Plank, Rittenhouse and Mary Denton and others.

The graduation services of Severance High School were held in the new church along with basketball games in the basement and many other community events.

The church contained oak pews and railings and was quite beautiful.

When the board decided to demolish the church due to non-use, the bell, dishes and upper balcony railing were given to the Hiawatha Southern Baptist Church. A crew from Perry, Kan., took out the pews and the windows, some were purchased locally, and the bricks were removed by a Kansas City firm. When the cornerstone was removed a metal box was discovered the size of a brick. This was opened on August 18, 1991. It contained a copy of the Severance news of the dedication week in 1914, a Bible, a church discipline, a letter from the Doniphan County Sunday School organization in Wathena soliciting five cents per member, a folding key from the 1874 church and the list in the paper said an 1874 and 1914 coin were included but these were not found. It was made of copper and folded over and soldered shut, very neatly. Where did the coins go, maybe whoever sealed the box decided to pocket them?

This leaves a vacant spot on the hill along with the vacant lots across the road that contained the old wooden school and the brick school built in later years.

The Christian Church was dedicated the same year 1914 it still stands but is in bad shape. The Catholic church burned a few years back.

—Beverly Kentzler