

1956

Eagle

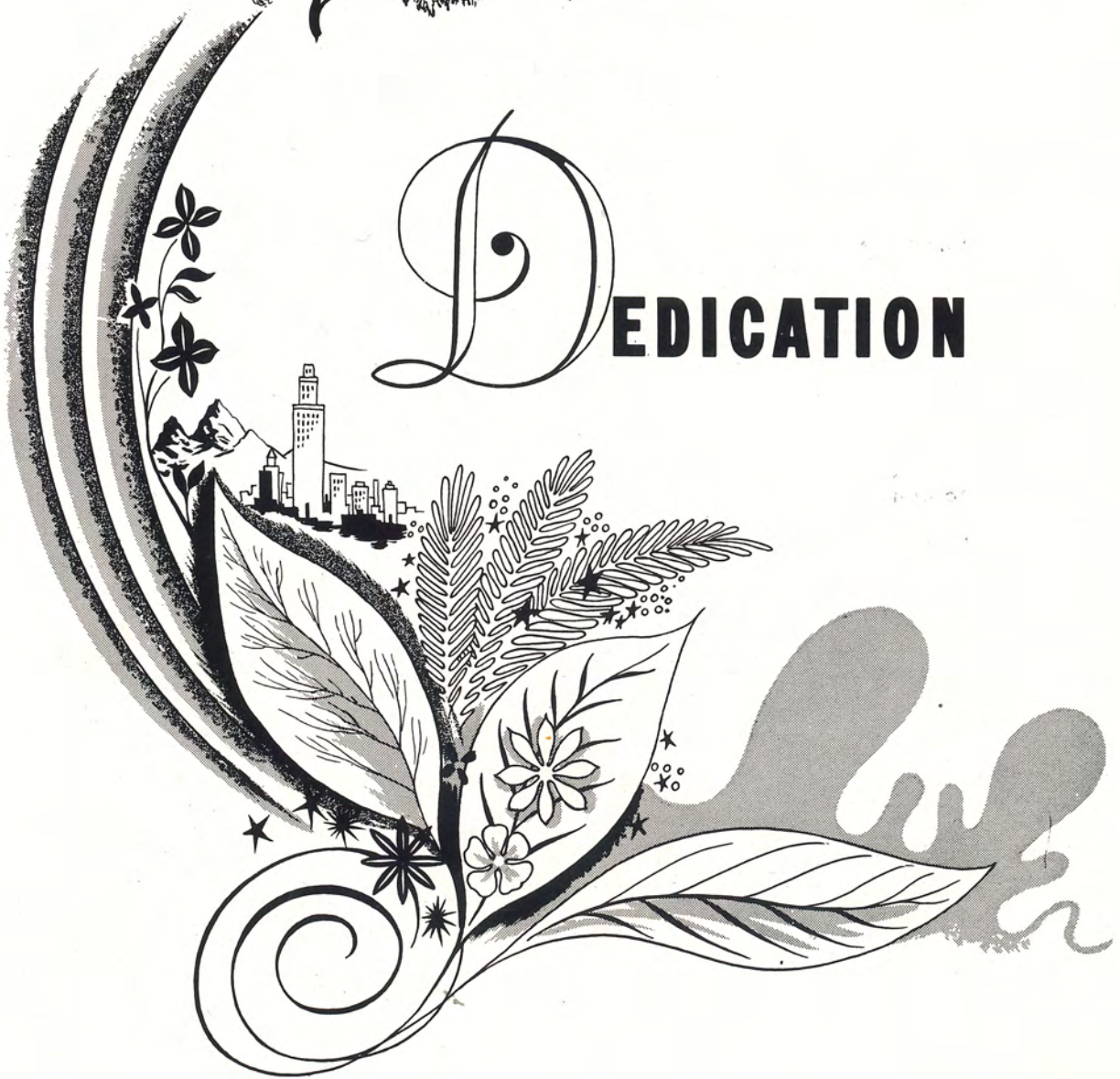


Annual Staff

Editor	Joan Jamvold
Assistant Editor	Helen Neal
Business Manager	Sally Kerr
Feature Editor	LeRoy Jamvold
Layout Managers	Christina Manthe Clifford Carpenter
Sports Editors	Dale Miller Henry Matthias
Photography Editors	Vera Frakes Karen Ellsworth
Activities Editors	Patty Peters Phillip Roland
Sponsor	Greta Pry

Eagle's Eye Staff

Editor Sally Kerr
Assistant Editor Patty Peters
Feature Editor Joan Jamvold
Gossip Editors Vera Frakes
Christina Manthe
Sports Editor Phillip Roland
Artist Helen Neal
Business Manager LeRoy Jamvold
Local News Vera Frakes
Class Reporter Joan Jamvold
Printers Karen Ellsowrth
Christina Manthe
Dale Miller
Subscription Managers Clifford Carpenter
Henry Matthias
Sponsor Greta Pry



DEDICATION

Dedication

We take great pleasure in dedicating this our 1955-56 edition of the Eagle to our parents, because---

You have strived toward developing us into useful citizens, who will be a credit to our community and country; whose wishes are that each of our lives will be dedicated to God.

You have made unselfish sacrifices in making our school an instrument in preparing us for leaders of tomorrow.

You gave us words of comfort and encouragement.

Your love has never failed in all our past years and will not fail us in years to come.

We hereby dedicate this edition of the Eagle to you, Our Parents.

FACULTY





James Softley

B. S., M. A.
Bookkeeping
Geometry
Algebra
Principal



GRETA PRY

B. S. in Ed. Ft. Hays K. S. C.
English
Typing
Psychology
Social Science
Sponsor of Sophomore Class

MARY LOUISE CHAPPLE

B. S. from K. S. C. in H. E.
Foods and Sewing
General Science
Biology
English
Sponsor of Junior Class





CHARLES F. SHORT

B. S.
Shop History
Coach
Sponsor of Senior Class

RICARDO M. LOPEZ, JR.

B. S.
Band
Glee Club
Constitution
Sponsor of Freshman Class





SENIORS



JOAN JAMVOLD

Basketball 1, 2
 Basketball Queen 4
 Candidate Queen for Carnival . . . 3
 Class President 3
 Class Reporter 4
 Editor of Annual 4
 Feature Editor of Paper 4
 Glee Club 1, 2, 3, 4
 Junior Play 3
 Pep Club 1, 2, 3

HELEN LUCILE NEAL

Basketball 1, 2, 3, 4
 Cheerleader 1, 2, 4
 Pep Club 1, 2, 3, 4
 Glee Club 1, 2, 3, 4
 Band 1, 2, 3
 Plays 1, 3, 4
 Class President 2
 Class Secretary 3
 Pep Club Vice-President 3
 Pep Club Reporter 2
 Spelling Contest 2, 3
 Apple Blossom Queen 2
 Corn Husking Queen 4
 Assistant Editor of Annual 4
 Artist of Paper 1, 3, 4





SALLY JO KERR

Basketball 1, 2, 3, 4
Cheerleader 3, 4
Plays 1, 3, 4
Class Vice-President 4
Student Council President 4
Carnival Queen 1
Apple Blossom Queen 3
Glee Club 1, 2, 3, 4
Band 1, 2, 3, 4
Editor of Paper 4
Ass. Business Manager of Annual . 4

LeROY MAGNUS JAMVOLD

Basketball 1, 2
Baseball 1, 2
Track 1, 2
Business Manager of Paper 4
Feature Editor of Annual 4





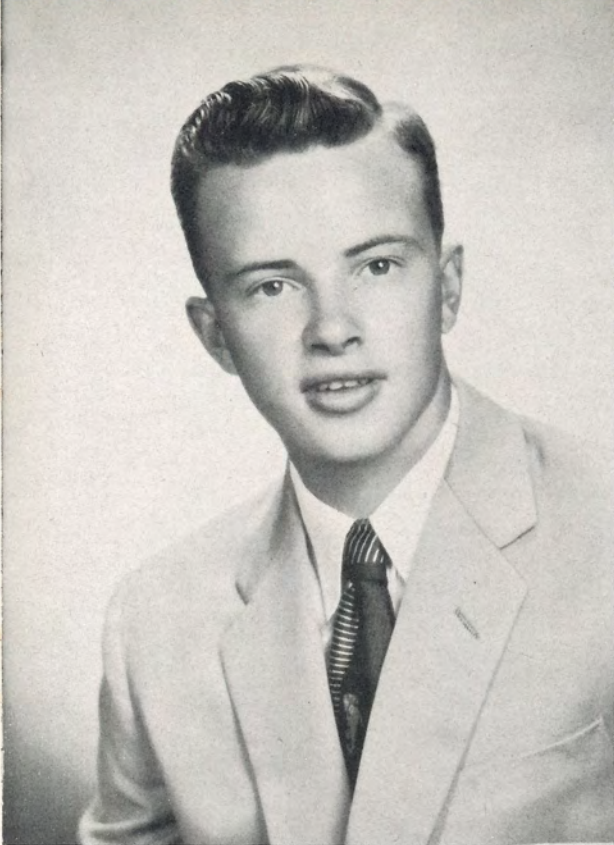
PATRICIA PETERS

Basketball 1, 2
 Cheerleader 1
 Plays 1, 3, 4
 Class Treasurer 1, 2
 Apple Blossom Queen 1
 Halloween Queen 4
 Princess of Basketball Queen . . . 2
 Glee Club 1, 2, 3
 Band 1, 2
 Photo Staff of Annual 4
 Assistant Editor of Paper 4

PHILLIP ROLAND

Basketball 1, 2
 Baseball 1, 2
 Track 1, 2
 Plays 1, 3, 4
 Band 1
 Class President 4
 Activity Editor of Annual 4
 Boys Sports Editor of Paper 4





CLIFFORD CARPENTER

Basketball 1, 2, 3, 4
Baseball 1, 2, 3, 4
Track 1, 2, 3, 4
Plays 1, 3
Subscription Mgr. of Paper 4

VERA FRAKES

Basketball 1, 2, 4
Junior Play 3
Senior Play 4
Class Secretary 4
Class Reporter 1, 3
Pep Club Vice-President 4
Basketball Princess 4
Photography Editor of Annual . . . 4
Glee Club 1, 2, 3
Band 1, 2, 3, 4
Local News Reporter of Paper . . . 4



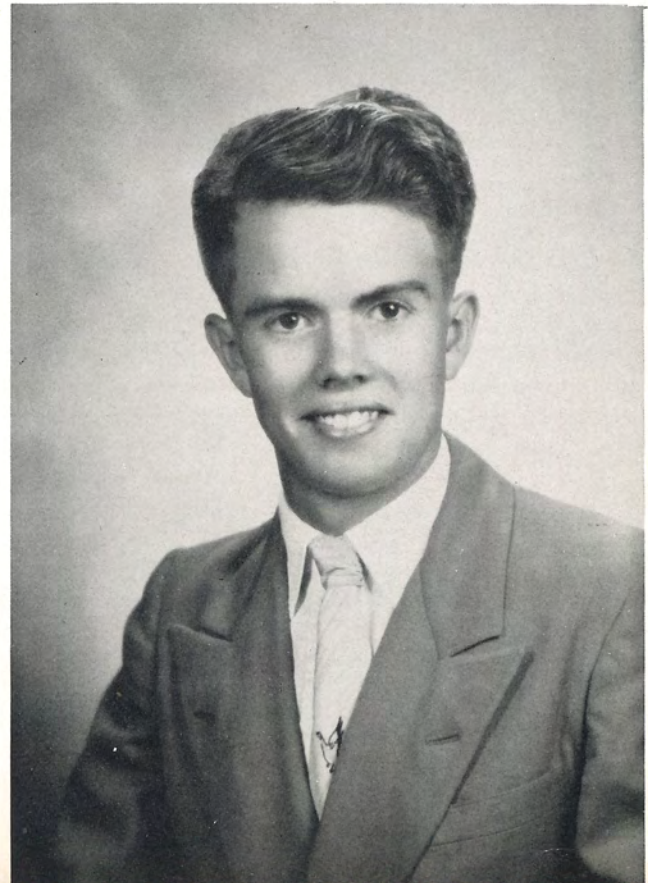


CHRISTINA MANTHE

Basketball 1, 2, 3
Plays 2, 3
Class Secretary 2, 3
Basketball Princess 4
Pep Club 4
Printer of Paper 4
Layout Manager of Annual 4

DALE MILLER

Basketball 1, 2, 3, 4
Softball 1, 2, 3, 4
Track 1
Junior Play 3
Printer of Paper 4
Sports Editor of Annual 4



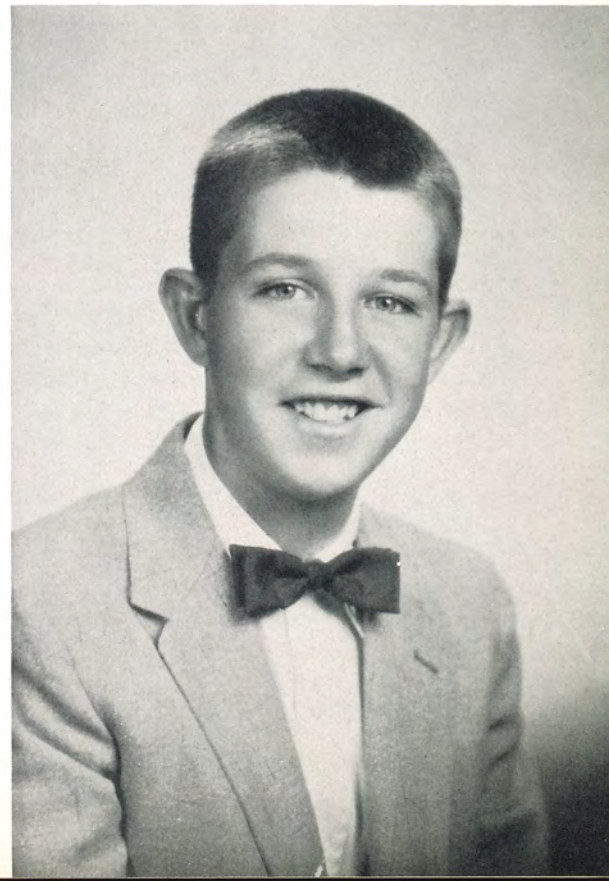


KAREN ELLSWORTH

- Basketball 1, 2
- Cheerleader 3
- Junior Play 1, 3
- Senior Play 4
- Class President 1
- Class Reporter 2
- Class Vice-President 3
- Class Treasurer 4
- Apple Blossom Queen 2
- Glee Club 1, 2, 3
- Photography Editor of Annual . . . 4
- Printer of Paper 4
- Band 1, 2, 3

HENRY MATTHIAS

- Basketball 1, 2, 3
- Baseball 1, 2, 3, 4
- Track 1, 2, 3, 4



Last Will and Testament

We, the Seniors of D. C. C. H. S., County of Doniphan, State of Kansas, gather together in this solemn hour, being of unsound mind and body, do hereby make, publish, and declare this to be our last will and testament.

- I, Vera Frakes will my heavy weight to Mildred Brassfield.
 - I, LeRoy Jamvold will my height to Gerald Gildersleeve.
 - I, Joan Jamvold will my ability as Basketball Queen to Liane Ellsworth.
 - I, Dale Miller will my ability to go with girls to Bill Roland.
 - I, Sally Kerr will my ability to keep one boy friend for four years to Gerry Ellsworth.
 - I, Helen Neal will my personality toward boys to Betty Pauly.
 - I, Karen Ellsworth will my ability to wear tight skirts to anyone who dares to wear them.
 - I, Joan Jamvold will my ability to write shorthand to anyone who cares to try it.
 - I, Vera Frakes will my ability to break a foot to anyone who likes to jump rope.
 - I, Patricia Peters will my brain to Mary Linn Denton.
 - I, Clifford Carpenter will my curly hair to any girl.
 - I, Henry Matthias will my bashfulness to Kenny Jamvold.
 - I, Phillip Roland will my ability to argue with the teachers to anyone who thinks they might win out.
 - I, Joan Jamvold will my ability to get 4 A's every six weeks to Hilda Meinardus.
 - I, Clifford Carpenter will my love for girls to Keith George and Stephen Higgins.
- We, Christina Manthe and Vera Frakes will our ability as Basketball Princesses to Alberta Coffelt and Beulah Ramseier.
- We, the Seniors of 1955-56 leave our sincerest thanks and appreciation for all that everyone has done for us.

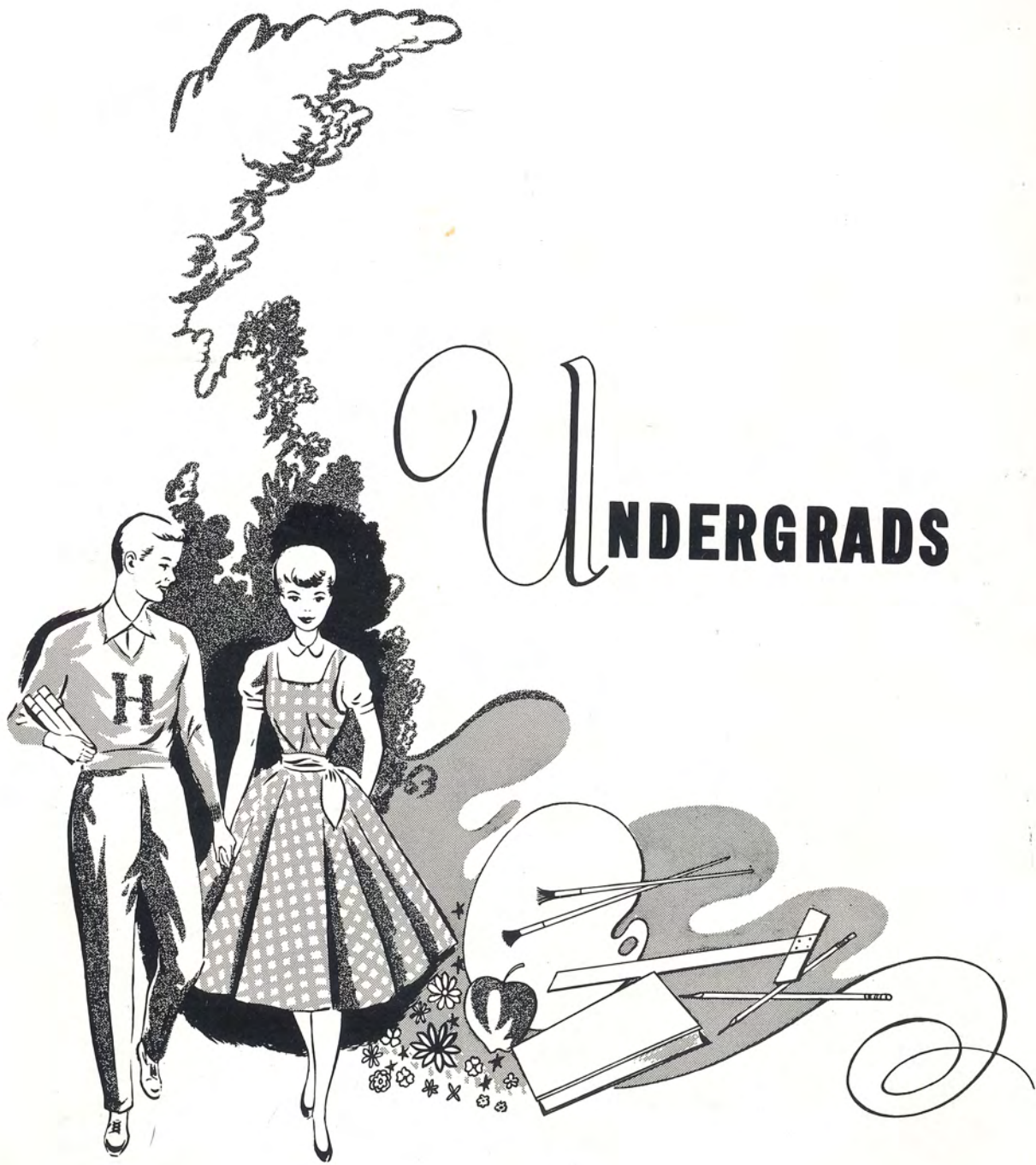
Signed, sealed, smeared, published, and declared by the Senior Class, as and for, their last will and testament, in the presence of us, who, at their request, and in their presence, and in the presence of each other, have hereunto subscribed our names as attesting witnesses to said instrument.

Signed this 24th day of
January, 1956

Joan Jamvold
Patricia Peters
Karen E. Ellsworth
Helen L. Neal
Dale E. Miller
Henry H. Matthias

SPONSOR:

Phillip Roland
Vera A. Frakes
Christina P. Manthe
Sally Kerr
Cliff Carpenter
LeRoy M. Jamvold
Betty Pauly



U NDERGRADS

JUNIORS



ANNA MAE HALLING



LEO SOYLAND



PAUL HALLING



LIANE ELLSWORTH



KEITH GEORGE



STEPHEN HIGGINS



NANCY KERR



MARY LINN DENTON



PAUL MONHOLLON



LEE RICKLEFS

SOPHOMORES



W. GILDERSLEEVE



JOHN ANDERSON



M. BRASSFIELD



D. WINCHESTER



H. MEINARDUS



JIMMY PAULY



MIKE BOOS



PEARL HILL



JOHN JOYCE



JEROME NIMZ



BILLY ROLAND



ALBERTA COFFELT



BEULAH RAMSEIER



E. BRASSFIELD



RITA SPAIGHT



JERRY PETERS

FRESHMEN

PICTURE SHY



BETTY PAULY



G. GILDERSLEEVE



GERRY ELLSWORTH



MARION BARROW



MARCILLE FRANKLIN



JON DENTON



SHARON RADER



BILL GEORGE



BILL LONG



K. JAMVOLD



ROGER RICE



DAVID HIGGINS



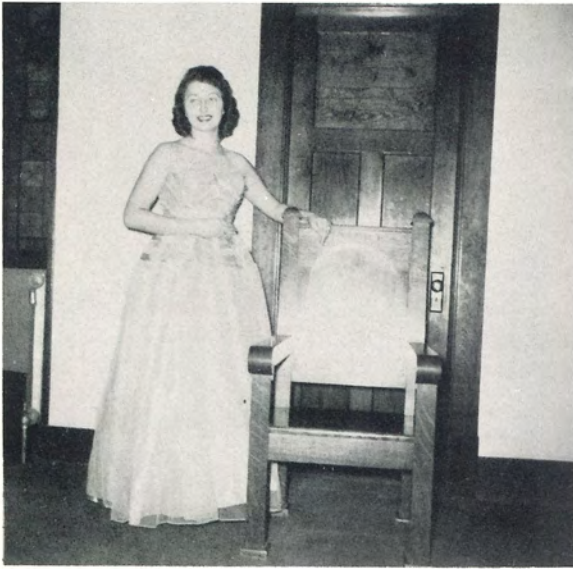
A THLETICS





A CTIVITIES

Q
U
E
E
N
P
A
G
E



HELEN NEAL
CORN-HUSKING-ST. JOSEPH



KAREN ELLSWORTH
CORN-HUSKING-ST. JOSEPH

PATRICIA PETERS
HALLOWEEN-HIAWATHA





H O M E C O M I N G G A M E

C H R I S T M A S

D A N C E





I
N
I
T
I
A
T
I
O
N



PURE RELAXATION



DRAGNET



P
E
P
C
L
U
B





CARNIVAL DANCE



BIOLOGY CLASS PLAY



STARLETS



ACCORDIONIST - VERA FRAKES



CARNIVAL KING AND QUEEN



GIRLS CHORUS





CONSTITUTION



ENGLISH III



ENGLISH I

TYPING II

ALGEBRA



SHOP CLASS



BAND



AMERICAN HISTORY





UP AND OVER



AREN'T WE CUTE?



LINE-UP



HALLOWEEN PARTY
WALI.FLOWER



LONG JOHN



HALLOWEEN PARTY



JUNIOR PLAY CAST



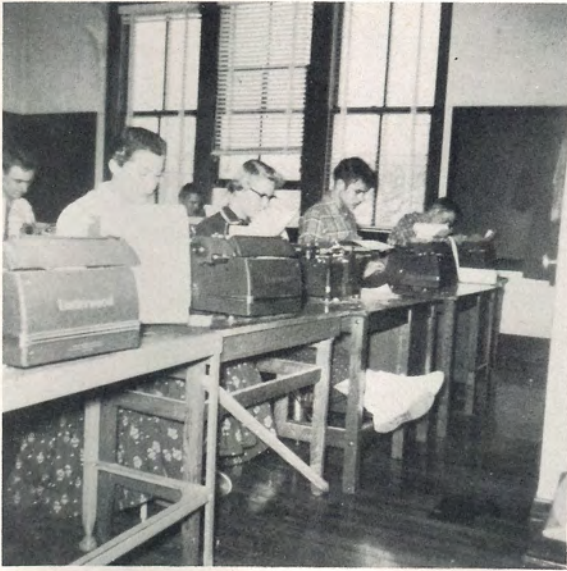
UP AND OVER

HAYRACK RIDE



SPEED CHAMP





HUMOR



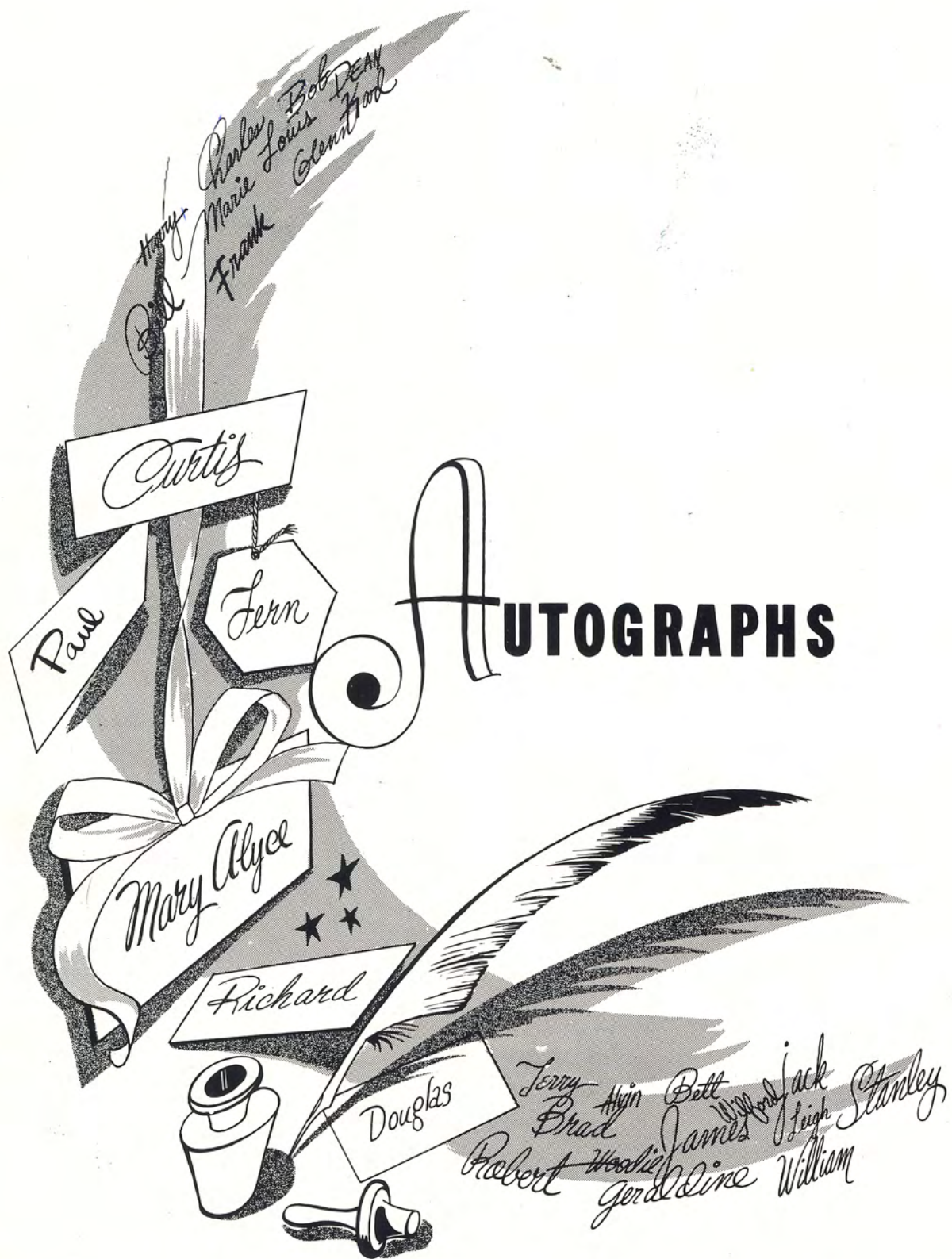




A. Lincoln







Curtis

Paul

Fern

Mary Alyce

Richard

Douglas

AUTOGRAPHS

Jerry Amy Bett Wynn Jack
Brad James Leigh Stanley
Robert Wanda Geraldine William



ADVERTISING

Compliments Of

Midwest Solvents Co., Inc.

Processors and Purchasers Of Milo and Grain Sorghums

Industrial Alcohol and By-Products

Phone 701

1300-10 Main Street

Atchison

Kansas

Compliments Of

Crawford's Poultry Market

Phone 200

1340 Main

Atchison

Kansas

A. O. DELANEY, Jr. AND ASSOCIATES

Abstracters

Complete Set Of Abstract Books To Date

Troy

Kansas

Compliments Of

ED. F. MANGELSDORF & BRO., INC.

Wholesale Seeds

Atchison

Kansas

RETTOR'S PRESCRIPTION PHARMACY

Dealer In Vaccines, Medicinals
Instruments For Livestock
General Sick Room Requirements
Gauze, Cotton, etc. - Sick Room Supplies
General Medicates For The Baby
Ice Cream Candy, Cigars, etc.
(SCHOOL SUPPLIES)
Phone 21

Denton

Kansas

Berry Brothers Hatchery

Austra - Whites and Berigolds
The Best For More Eggs
Available The Year Round
Phone 461
2101 Main

Atchison

Kansas

CHC Tire Supply

Art Harned - Geo. Cox
No Job Too Big - No Job Too Small
Tires - Tubes - Batteries - Recapping - Vulcanizing
Telephone 2699
710-12 Main Street

Atchison

Kansas

Vernon B. Tibbetts Mortuary

Phone 119

Troy

Kansas

C. H. Gish Company

Lumber - Hardware - Paint

Denton

Kansas

Highland Lumber Co.

Lumber - Coal - Paint

Building Materials

Highland, Kansas

Wasson Service Station

Geo. H. Wasson
Gasoline and Oil
Batteries - Tires - Tubes
Accessories
Lubricating and Washing
Phone 170
Troy, Kansas

Moore Farm Supply

Feeds - Seed - Corn
Field Seed - Custom Spraying
Phone 18
Highland, Kansas

Home Of
Hotpoint
RCA Victor
Sunbeam

Bush Appliance

421 Commercial
Atchison, Kansas

Bendena State Bank

Courteous and Dependable

Member FDIC.

Capital and Surplus \$45,000.00

Bendena, Kansas

The New Admiral Store

Say The Magic Words
Food doesn't trade flavors in an
Admiral Dual-Temp Refrigerator
Hdq. For All Admiral Appliances
And TV's In Atchison Co.

Smith's Appliance Store

Phone 408
731 Commercial
Atchison, Kansas

Red Front Cafe

Charles and Aiberta Turpin
Good Home Cooking
Homemade Pies
Ice Cream - Pop - Candy
Sandwiches
Open Daily Except Sundays
From 6:45 P.M. To 8:00 P.M.
Denton, Kansas

The Bank of Denton

Total Capital Accounts \$88,000.00
G. A. Roberts, Pres.
C. H. Gish, V-Pres.
C. L. Burke, Cashier
Alida Kessler, Ass't. Cashier
Thomas J. Roberts, Ass't. Cashier
Denton, Kansas

Compliments Of

Keebler Grocery

Phone 58

Denton, Kansas

Intfen's

Home Furnishers Since 1885

We Deliver

623-25 Commercial Street

Atchison, Kansas

Compliments

Of

A Friend

Dick Larzelere Motors

Ford Cars and Trucks

Phone 254

Highway 36

Troy, Kansas

Triplett Grocery

Fruits - Vegetables

Groceries - Meats

Phone 43

Denton, Kansas

Ramseys

Headquarters For

Sportswear and Accessories

For The Young Miss

Atchison, Kansas

Robt. Walter

Gas - Oil - Grease
Tires and Accessories

Representative Of
Ramsels Oil Co.

Phone 18

Troy, Kansas

Mrs. Lilla Kimmi Beauty Shop

Denton, Kansas

Boosters

HANNA CANDY

Atchison

Kansas

HIGHLAND VIDETTE

Highland

Kansas

ERDLEY'S STATION

Severance

Kansas

R. H. McCOY

Nortonville

Kansas

WHITMORE'S GARAGE

Denton

Kansas

TROY GRAIN AND FUEL

Troy

Kansas

HOTEL ATCHISON

Banquets, Parties and Special Sunday Dinners

RUNYAN JEWELERS

Atchison

Kansas

RUDOLPH'S

Atchison

Kansas

MARTIN CLEANERS

Troy

Kansas

KANSAS CHIEF

Troy

Kansas

HAY'S

Troy

Kansas

OSCAR MAYER ELECTRIC SHOP

Troy

Kansas

ARCHIE'S BARBER SHOP

Troy

Kansas

Boosters

KESSLER GARAGE

Denton

Kansas

TILBURY GARAGE AND HARDWARE

Bendena

Kansas

GORDONS READY-TO-WEAR

Atchison

Kansas

L. AND V. CAFE

Troy

Kansas

F. H. DILLENBACK

Troy

Kansas

Attorney

WINCHESTER BARBER

Highland

Kansas

HAROLD'S DEPARTMENT STORE

Highland

Kansas

FRENCH CAFE

Highland

Kansas

STRUNK PRODUCE

Highland

Kansas

DONIPHAN COUNTY EQUIPMENT

Troy

Kansas

FIRST NATIONAL BANK

Troy

Kansas

M AND C FLORAL COMPANY
Corsages and Flowers Of All Kinds

Atchison

Kansas

Compliments Of
BERNARD BOOS

Denton

Kansas

